



Swaffham Campus Prospectus

2024-2025



Introduction

This School is a registered and accredited Independent School established to provide a quality education to the UK community and, in particular, to Brethren students.

The School's Ethos, Values Statement and Guiding Principles govern the School and are reflected in our policies and procedures, all of which meet statutory and registration requirements for Independent Schools.

Contents



About OneSchool Global	4
OneSchool Global Ethos	5
OneSchool Global Vision and Mission Statements	6
Learning to Learn Framework	7
Student Persona	8
OneSchool Global Values	9
Welcome	10
History	12
Global House System	13
Our Curriculum	16
OneSchool Global Awards	17
Career Advancement Programme	18
Policies	20
Teachers and Staffing	21
School Information	22
Testimonials	24

About OneSchool Global UK

OneSchool Global is a global school, with over 120 campuses in 20 countries, including cities such as New York, Paris, Sydney, Rome, Auckland, Copenhagen, Los Angeles and San Francisco.

With an innovative approach to learning, delivered in cutting-edge, technology-empowered physical and digital learning environments, OneSchool Global is preparing life-ready students who learn how to learn, and achieve.

Our self-directed learning model places students at the centre of all that we do. We challenge traditional and dated pedagogy and embrace technology to deliver the best possible learning outcomes for our students.

OneSchool Global recruits and develops high quality teachers. Our teachers partner with our students in their learning and rather than being considered the 'sage on the stage', they act as both teacher and coach to build students' skills, resilience and independence.

Our in-house Teacher Academy provides teachers with the training they need to be the best they can be. We provide teachers with the skills they need to be successful at OneSchool Global and skills that will make them highly capable and competent in teaching in a digital world.

OneSchool Global is a school that lives its values and is guided by the School's ethos. The School is generously supported via the donation of time and financial support from members of the Plymouth Brethren Christian Church.



[Click on the OneSchool logo to learn more about how this cutting-edge schooling system was inspired and how this awesome vision is being realised.](#)





OneSchool Global Ethos

At OneSchool Global, we are committed to a culture where students are encouraged to develop their full potential and acquire the discipline of learning how to learn while upholding Christian teachings and beliefs.

The truth and authority of the Holy Bible and strong family values underpin the commitment of the School to provide quality in every facet of education - curriculum, teachers, facilities, management, and discipline - in a safe and caring environment.

OneSchool Global Vision Statement



A global education ecosystem that develops life-ready students who learn how to learn and achieve.

To ensure our students are life-ready, we need to teach differently. To be life-ready in today's world, our students need to learn how to learn. To be life ready, our students need to develop independent and critical thinking skills, and skills such as teamwork and collaboration

It is these skills that form an aptitude base that allows a student to adapt. Most importantly, these critical skills are transferable. When industry changes, when entire fields of work and job types are no longer required, it will be the life-ready, critical thinkers who stand the test of time and find new ways to add value.

We are prepared to do things differently at OneSchool Global to deliver on this vision. We challenge traditional and outdated pedagogical models. Our learning centres, the way we embed technology in them, and ultimately our students, are a testament to this.

OneSchool Global Mission Statement

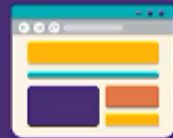


“Learning to Learn”

The School is committed to creating and delivering learning programmes that meet the educational needs of each student, and to nurture the attitudes and skills necessary for the continual learning and personal growth throughout life.

“Learning to Learn” means to use learning as a tool whereby students are equipped with the ability to think critically, process information perceptually, analyse data accurately, and evaluate situations intelligently in order that they fulfil their true potential.

The Assignment



- is a contract that establishes
 - what the teacher needs to teach
 - what the student can learn on their own
 - what the student needs to do to demonstrate their learning
- is anchored by a Big Question
- aligns to the curriculum
- provides choice and differentiated pathways
- defines learning intentions, success criteria
- includes clear checkpoints, deadlines and feedback
- contains formative/summative assessments
- is shared between students, teachers and campuses

The Study



- is student led
- is where students make a plan and execute it
- is time to work on tasks contained in The Assignment
- includes focused, semi-collaborative and collaborative learning
- enables coaching from teachers and peers

The Tutorial



- provides students with 1:1 (or small group) specialist support
- can be requested by students or teachers
- enables individualised support/extension

The Lesson



- is teacher led
- is time for 'what the teacher needs to teach'
- enables direct instruction
- involves the whole class

Learning to Learn

A Quality OSG Student...



Lives the Values:

Committed to displaying integrity and care & compassion, is respectful of others and takes responsibility for their actions.



Is Self-Directed:

Understands the Learning to Learn Framework and is driven by personal goals, initiative, and self-discipline to grow and achieve.



Is a Team Player:

Builds strong connections with educators, on foundations of trust and respect. Is collaborative and supportive of others in achieving common goals.



Is Diligent:

Committed to excellence, hard work and timeliness in all responsibilities and tasks.



Is a Problem Solver:

Seeking innovative, creative and effective solutions to challenges and obstacles.



Takes Ownership:

Wears school uniform with respect, manages distractions maturely, and makes good decisions about behaviour and attitude.



Has a Positive Attitude:

Applies constructive thinking and has a positive approach to school.



A global education ecosystem that develops life-ready students who learn how to learn, and achieve.



OneSchool Global Values

At OneSchool Global each student, parent and staff member shall uphold the values of the School which include:

Integrity – uprightness, honesty and decorous conduct, governed by the Holy Bible,

Care and Compassion – kindness, consideration and generosity to all,

Respect – for all people, property, opinions and those in authority,

Responsibility – for our actions, progress and the environment and,

Commitment – to self-discipline and the pursuit of excellence.





Welcome Message



Whilst Swaffham Campus is considered an independent school, it is part of the biggest global network of schools on the planet today: OneSchool Global UK. Truly, like never before, our school is just one of 24 campuses in the UK together with many more in Australia, Argentina, Caribbean, Europe, New Zealand and North America, all aligned with the same core values:

1. Integrity
2. Care & Compassion
3. Respect
4. Responsibility
5. Commitment

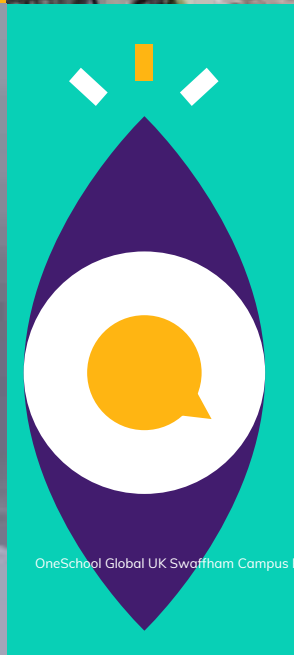
With the combined complement of a great staffing team together with the advancement of technology by which our students have the ability to access, via 'Zoom', the tuition and resources needed for their learning, this really sets the stage for their educational journey.

Self-Directed Learning is central to empowering our students for life beyond school and the tones of OSG's tag line 'Learning to Learn' resound through every step of the way.

At Swaffham Campus the 'Language of Learning' is taking our students to understand where they are in their educational tasks and the methods and strategies required to keep progressing forward. Our teachers use a variety of pedagogies to reach and support and guide students in each facet of their education.

Mr Karl Brothers
Lead Campus Administrator







Our history

In the early 1990's study centres, later registered as schools, were set up in Peterborough and Norwich. After some years of operation, the Focus Learning Trust was set up as a national education trust to provide co-ordination of expertise and support for many schools around the UK, all of which were established on the same basis.

Both the Norwich and the Peterborough schools, along with most of the Focus-affiliated schools, were registered as Independent Schools with the DFES in 2004. In order to improve the standards of education and facilities and still operate cost- effectively, the two schools were amalgamated, and Breckland Park School opened at the start of the school year in September 2005 in Swaffham, Norfolk.

Early in 2008 the school obtained permanent planning permission on the site and major construction work began. The project included a complete refurbishment of the existing buildings and construction of a new gym and senior teaching block.

In September 2008, Breckland Park School opened its doors to the Primary years 3, 4, 5 and 6, in addition to a full-time year 12 and 13 provision.

In September 2012 the school changed its name to Focus School Swaffham Campus, and a new block was added to further improve facilities.

Further changes have taken place since with the addition of the Learning Centre and Primary Learning Centre plus a new catering kitchen for 2019.

In April 2019, Focus Learning Trust schools were rebranded as 'OneSchool Global UK'

The Global House System



The Global House System is based around the ethos of inclusion and encouraging teamwork.

It is designed to reward academic work, effort, sporting achievements and good citizenship. It is the role of the House System to embrace all students and provide a climate of success for all.

The Global House System consists of three houses each with an assigned colour as shown below. These houses are run globally throughout our affiliated schools, meaning that we can encourage teamwork with other regions, not just within our campus, thus enhancing our students' desire to strive for their best, due to a much wider area of healthy and constructive competition.

Each student is assigned to a House and will normally remain in that House for his/her duration at the campus. Many house events and competitions are run which link to learning and help foster both teamwork and self-directed learning skills. The Global House System encourages healthy participation in activities and is well supported by staff and student leaders.



Charitable Fundraising

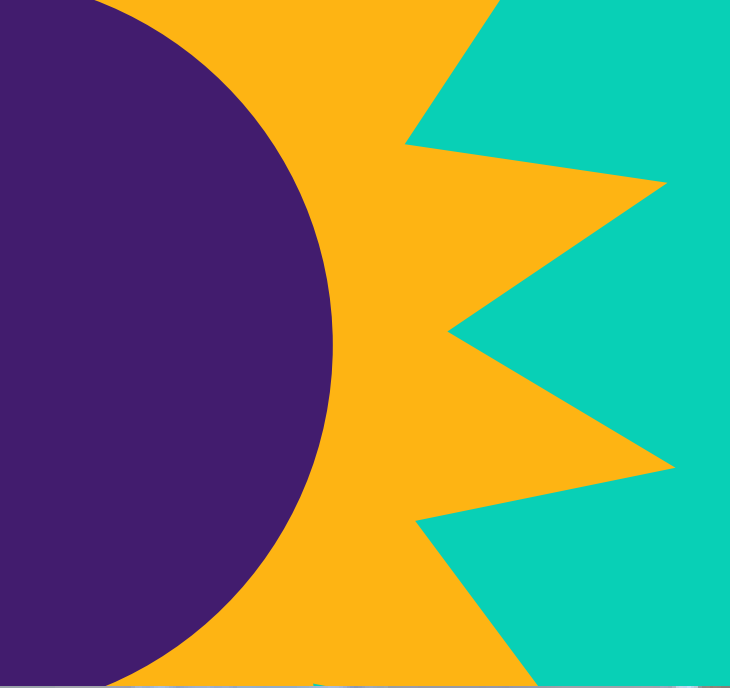


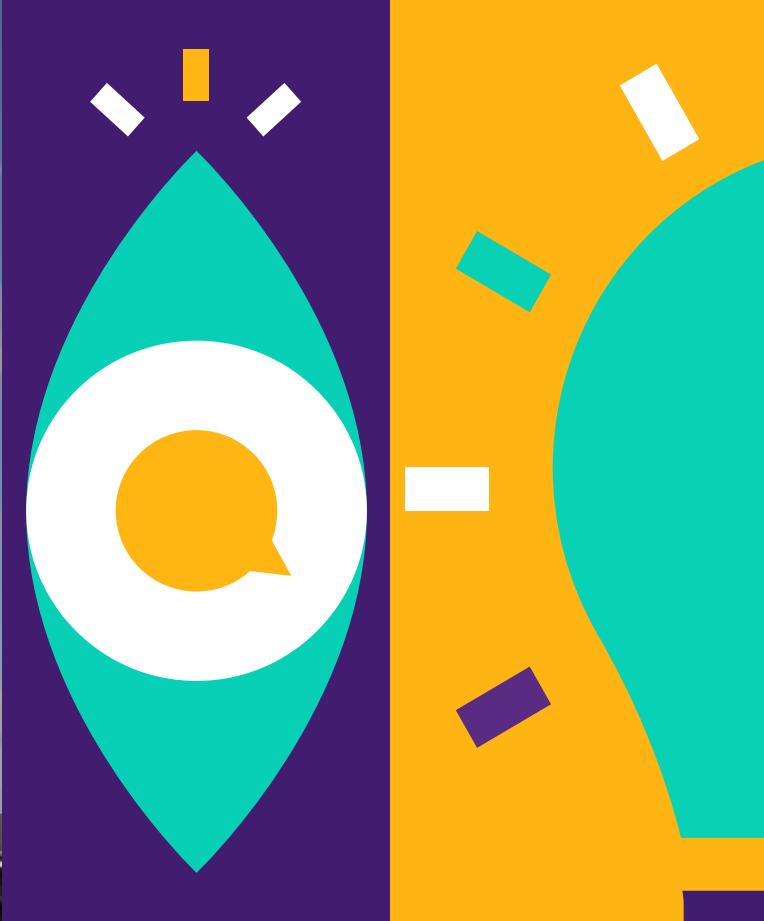
At Swaffham Campus the whole community is committed to helping those less fortunate than ourselves.

There is a strong, student-led culture for fundraising and charity at Swaffham. This academic year students have raised money for many charities. The majority of fundraising initiatives are student-led, with representatives from our student council coming up with ideas for school-wide events. Not only does each initiative raise hundreds of pounds for charity, but it also gives students valuable experience in organising and leadership skills.

Charitable donations made recently include:

- Ukraine Appeal
- Save The Children
- Rapid Relief Fund
- Macmillan
- Great Ormond Street Hospital





“

It's a brilliant school that is seeking to improve all the time, keep up the good work.

”

Our Curriculum



Wholly supports the School's ethos in promoting Christian values and provides a balance, ensuring students develop academically, aesthetically, morally and physically.

Swaffham Campus has adopted the Curriculum Policy developed by OneSchool Global UK. The curriculum is designed to ensure that every student can realise their potential. The curriculum is assignment-based, enabling the self-directed ambition of the organisation to be fulfilled. All students follow a personalised and challenging curriculum.

Years 3-6

Art
Design & Technology
English
Geography
History
IT
LAMDA
Mathematics
MFL
Music
PSHE
Physical Education
Science

Years 7-8

Art
Citizenship
Design & Technology
English
Food & Nutrition
Geography
History
IT
LAMDA
Mathematics
MFL
PSHE
Physical Education
RSE
Science

Years 9-11

Art, Craft & Design
Citizenship
Design & Technology
English
Food & Nutrition
French
Geography
German
History
ICT
LAMDA
Latin
Mathematics
PSHE
Physical Education
RSE
Science

Years 12-13

All of our students progress to the sixth form and are offered a broad range of curriculum options designed to meet the abilities and aspirations of all our learners.

Cambridge International A Level qualifications are offered in Art & Design, Design & Technology, English, History, Geography, Mathematics, Accounts, Law, Business Studies, French and German, and Global Perspectives alongside Cambridge Technical qualifications in IT, Digital & Creative Media and Business, a range of Level 2 qualifications, and Autodesk Fusion 360.

Additional subjects include Physical Education, PSHE, and RSE while courses such as Chef Skills, LAMDA Speaking in Public, London Institute of Banking and Finance and Extended Project Qualifications are available to students.

Digital technology, including Zoom and Canvas platforms enable campuses to collaborate with other schools for subject delivery which enables students to study subjects that would not normally be economically viable.

Xello and the Careers Advantage Programme also adds a unique and high quality vocational element to our curriculum which supports all students in gaining a better understanding of their career pathway and progression routes helping to ensure they are life-ready on graduation from OneSchool Global UK and excited about embarking on future post graduate qualifications.

Extra-Curricular activities are a strength of our school. Our students have the opportunity to collaborate on extra-curricular projects and activities at campus, regional and global level. Recent highlights including our termly Choir Festival, annual Public Speaking Competition and inter campus debating opportunities. Our extra-curricular offer is a key part of our curriculum and an area of continuous growth and development for OSUK.

OneSchool Awards



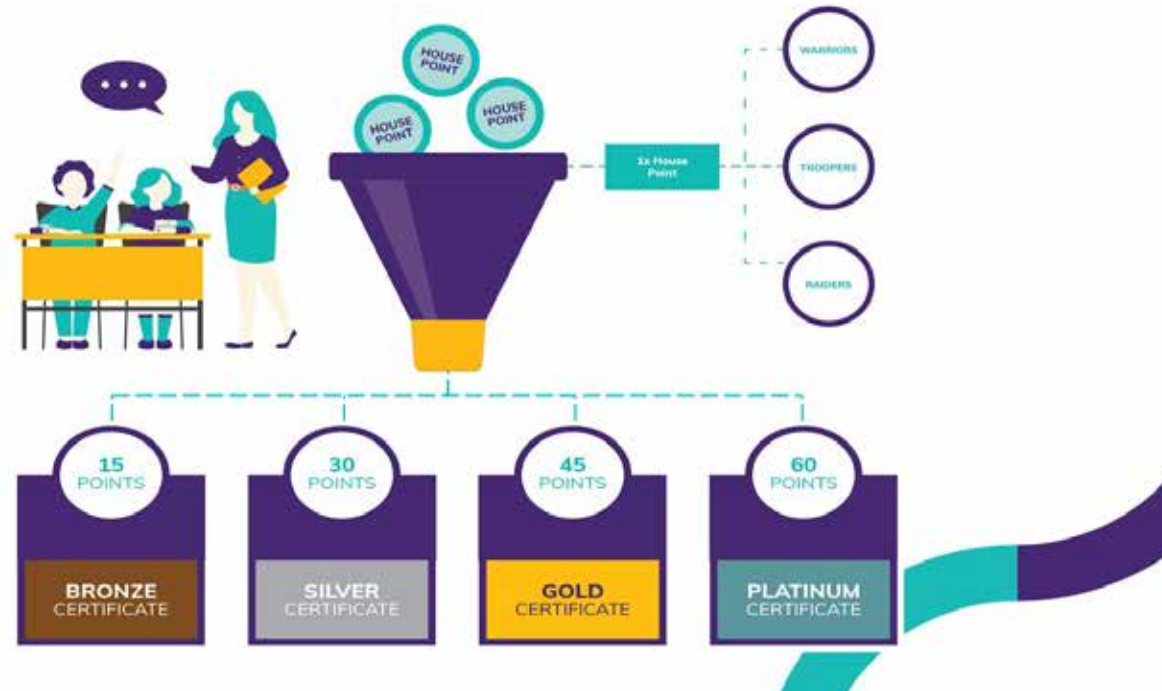
House Points:

A House Point is given when a student demonstrates notable qualities of the OSG Student Persona, either in their academic or personal achievements.

House Points recognise the individual student and they also add to the 'House' total for the House that the student belongs to. The winning house each year is awarded the House Cup, for the Campus, Regionally and Globally.

Merit Certificates:

When a student receives a certain number of House Points during the year, they gain a Bronze, Silver, Gold and Platinum Merit Certificate.





**Hit the ground
running**

Career Advancement Programme



Bridging the gap between school and work; OneSchool Global UK offer a unique career advancement plan to all our students and this is proven to prepare them for the world of work:

What is CAP?

The Career Advantage Programme (CAP) provides all students with the opportunity to gain the skills and aptitude to achieve rapid success in their post-school careers.

CAP does this by:

- Providing career fundamentals and business foundations offered to all students in Year 12 and 13.
- Analysing the capability of each student professionally to ensure the student can effectively complete the courses.
- Sponsorship for students to carry out extra-curricular studies in the last two years of school.

The CAP curriculum

All students in Year 12 complete a Career Fundamentals course which is a global standard for employers. For CAP students, the diploma-type courses provide a theoretical and academic rigour which underpins the students' academic programme and the career skills based study provides practical, real-world approaches to learning and helps them to develop skills and competencies required for lifelong learning.

Visit the website to find out more

<https://www.oneschoolglobal.com/cap/>

Beyond the classroom



Why is CAP Important?

There is an increasing awareness globally that high school studies alone are not adequately preparing students for the modern workforce. The Career Advantage Programme is aimed at equipping our children with the necessary skills to bring positive benefits to our businesses from day one.

Important for students:

- improving their employment opportunities
- improving the potential of earning a higher income on graduation
- empowering rapid progress along their career path

Important for businesses:

- higher value employees that are useful from day one
- employees with an established work ethic; self-starters, self-finishers, self-motivators
- employees that understand the value of study and training

“The innovative approach to the curriculum, teaching and learning is what makes this school outstanding because it enables all pupils to make excellent progress and achieve their very best”



- Business Owner



Policies and Documents



Swaffham Campus is committed to the safeguarding and protection of its students in line with national guidance. We endeavour to provide a safe and welcoming environment where all children are safe, respected and valued, as well as being underpinned by the following two key principles:

- A child-centred approach; for services to be effective they should be based on a clear understanding of the needs and views of children.
- Everyone employed and who comes into contact with children at Swaffham Campus has a responsibility in relation to safeguarding.

At Swaffham Campus we listen to students and maintain a child-centred approach to Safeguarding and Child Protection. We provide a safe environment for students both under and over 18, especially those who are considered vulnerable. All of our Policies are available upon request from our school office or via email: swaffham@uk.oneschoolglobal.com

Admissions Policy

Anti-Bullying Policy

Attendance Policy

Complaints Procedure

Curriculum Policy

EAL Policy

Equal Opportunities Policy

Exclusions Policy

Fire Safety (Prevention) Policy

First Aid Policy

Health & Safety Policy

Learning Support (SEND) Policy

RSE Policy

Risk Assessment Policy

Safeguarding & Child Protection Policy

Safer Recruitment Policy

Student Discipline Policy

Supervision of Students Policy

Supporting Students with Medical Conditions

Additionally, the particulars of the arrangements for promoting student health and safety on educational trips and visits are available from the school office on request.

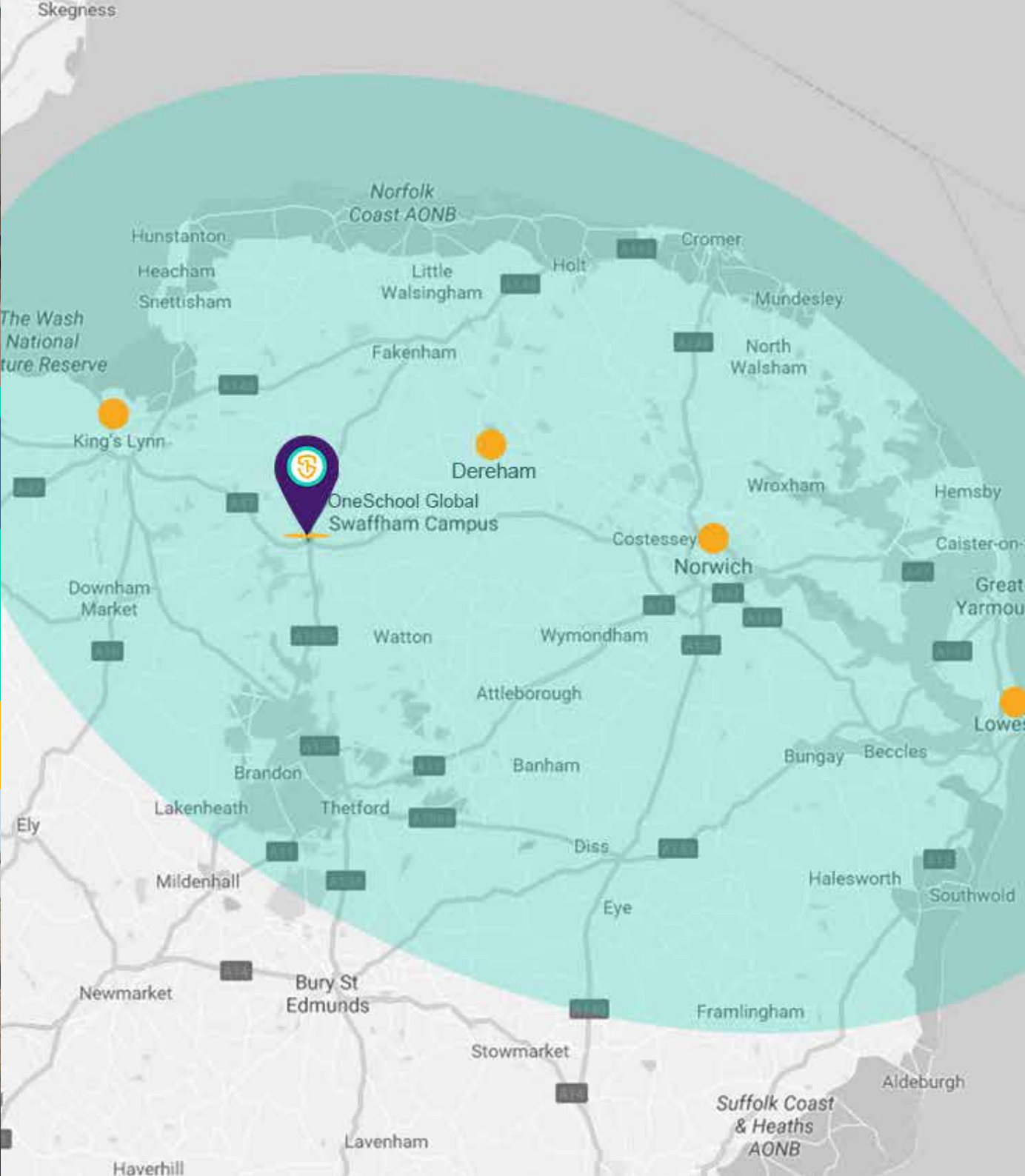
Teachers and Staffing



At OneSchool Global UK Swaffham Campus teachers hold qualifications applicable to their post. In the absence of qualifications in some practical subjects previous experience will be considered if applicable. All staff, governors and volunteers have been subject to regulatory safer recruitment checks.

Name	Assigned Responsibilities	Qualifications
Mrs Emma Armitage	Citizenship Teacher	Advanced Certificate in Education QTS BA – Hospitality Management
Mrs Debbie Barley	Campus Admin Officer	OCR Level 1 Cert for IT User, GCSE's, A Levels
Miss Hazel Barnes	Campus Admin / Art & Food Technician	-
Miss Jemma Button	KS2 Teacher DDSL	BSc First Class in Environmental Science, PGCE, QTS
Mrs Sophie Cartwright	Regional SENDCo	-
Mrs Sharon Chandler	National Digital Media Teacher	BSc (Hons) Open (Open University)/QTS
Mr Mark Clayton	Deputy Campus Principal Interim DSL, KS3 Lead Maths Teacher	B.Eng (Hons) - Mech. Eng QTLs and NPQH
Mrs Katie Collings	Campus Admin Officer	Level 5 NVQ Diploma in Management, National Certificate for Dental Nurses
Mrs Sara Dutton	Teaching Assistant	NVQ Level 3

Name	Assigned Responsibilities	Qualifications
Mr Mark Eastwood	Science Teacher	Honour degree in Biology
Mrs Claire Emery	KS2 Lead	QTS/ BA (Hons) in History and English
Mr Robert Green	Assistant Campus Principal Geography Teacher KS4 Lead Post-16 Lead	B.Sc (Hons) PGCE
Ms Catherine Hearmon-Owens	English Teacher	BA Honours & PGCE
Mr Richard Hodgkinson	Premises Manager	-
Ms Rachel Hooton	Learning Support Coordinator	-
Mrs Wendy Kazer	Higher Level Teaching Assistant	NVQ L3
Mrs Laura Leverton	Design and Technology Teacher	-
Mrs Joanna Olivier	PE Teacher	Diploma MSC of PE, QTS
Ms Louise Preece	Exams Officer & Campus Admin Officer	-
Mr Paul Rapley	Campus Principal, Business Teacher	BA (Hons) Business Studies PGCE in Education, NPQH
Mr Jamie Thurlow	PE Teacher	BA (Hons) PGCE



School Information



OneSchool Global UK Swaffham Campus

Turbine Way, Swaffham PE37 7XD

- Tel: 01760 336939
- swaffham@uk.oneschoolglobal.com
- oneschoolglobal.com/swaffham

Monday to Friday 08:00 - 16:00

Proprietor: **OneSchool Global UK**

OSG UK No: 417
Examination Centre No. 18304
Charity No: 1181301
DfE No: 926/6153

Complaints and Exclusions (2023-2024):

There were no complaints or exclusions during this academic year 2023-2024.

CA Team	Mr Karl Brothers (Lead CA) Mr Tim Percival
CA Board Members	Mr Craig Turner Mr Dan Lyon Mr Myles Cook Mr Russell Evershed
Campus Principal	Mr Paul Rapley
OneSchool Global UK Representative	Mr Bruce Haughton - Regional Team Leader Mrs Sarah Bennett - Regional Principal
Holiday/Out of Hours Contact	Mr Paul Rapley paul.rapley@uk.oneschoolglobal.com
Correspondence for the Chair of the Trustees should be addressed to the Principal Office	Mr Bruce Haughton OneSchool Global UK Swaffham Campus The Precinct Warwick Poseidon Way Warwick CV34 6BY

For further information and the school calendar please visit our website: oneschoolglobal.com/swaffham
Visit the OneSchool Global UK website: www.oneschoolglobal.com



From the onset I have been impressed by the friendly nature of the staff and students at OneSchool Global Uk Swaffham Campus.

Teacher

Swaffham Campus is where your sons and daughters are nurtured pastorally, ensuring happiness in their school days. Wellbeing is fundamental in the fulfilment of academic and social achievements; the future is created here!

Campus Principal







OneSchool Global

Learning to learn

OneSchool Global UK Swaffham Campus

Turbine Way
Swaffham
PE37 7XD
Tel: 01760 336939
Email: swaffham@uk.oneschoolglobal.com

OneSchool Global UK

The Precinct Warwick
Poseidon Way
Warwick
CV346BY
Tel. 0330 055 5600
Email: support@uk.oneschoolglobal.com