



# Maidstone Campus Prospectus

2024-2025



## Introduction




---

This School is a registered and accredited Independent School established to provide a quality education to the UK community and, in particular, to Brethren students.

The School's Ethos, Values Statement and Guiding Principles govern the School and are reflected in our policies and procedures, all of which meet statutory and registration requirements for Independent Schools.

# Contents

About OneSchool Global	4	
OneSchool Global Ethos	5	
OneSchool Global Vision and Mission Statements	6	
Learning to Learn Framework	7	
Student Persona	8	
OneSchool Global Values	9	
Welcome	10	
History	12	
Global House System	13	
Our Curriculum	16	
OneSchool Global Awards	17	
Career Advancement Programme	18	
Policies	20	
Teachers and Staffing	21	
School Information	22	
Testimonials	24	

## About OneSchool Global UK

OneSchool Global is a global school, with over 120 campuses in 20 countries, including cities such as New York, Paris, Sydney, Rome, Auckland, Copenhagen, Los Angeles and San Francisco.

With an innovative approach to learning, delivered in cutting-edge, technology-empowered physical and digital learning environments, OneSchool Global is preparing life-ready students who learn how to learn, and achieve.

Our self-directed learning model places students at the centre of all that we do. We challenge traditional and dated pedagogy and embrace technology to deliver the best possible learning outcomes for our students.

OneSchool Global recruits and develops high quality teachers. Our teachers partner with our students in their learning and rather than being considered the 'sage on the stage', they act as both teacher and coach to build students' skills, resilience and independence.

Our in-house Teacher Academy provides teachers with the training they need to be the best they can be. We provide teachers with the skills they need to be successful at OneSchool Global and skills that will make them highly capable and competent in teaching in a digital world.

OneSchool Global is a school that lives its values and is guided by the School's ethos. The School is generously supported via the donation of time and financial support from members of the Plymouth Brethren Christian Church.



[Click on the OneSchool logo to learn more about how this cutting-edge schooling system was inspired and how this awesome vision is being realised.](#)





## OneSchool Global Ethos

At OneSchool Global, we are committed to a culture where students are encouraged to develop their full potential and acquire the discipline of learning how to learn while upholding Christian teachings and beliefs.

The truth and authority of the Holy Bible and strong family values underpin the commitment of the School to provide quality in every facet of education - curriculum, teachers, facilities, management, and discipline - in a safe and caring environment.

## OneSchool Global Vision Statement



### **A global education ecosystem that develops life-ready students who learn how to learn and achieve.**

To ensure our students are life-ready, we need to teach differently. To be life-ready in today's world, our students need to learn how to learn. To be life ready, our students need to develop independent and critical thinking skills, and skills such as teamwork and collaboration.

It is these skills that form an aptitude base that allows a student to adapt. Most importantly, these critical skills are transferable. When industry changes, when entire fields of work and job types are no longer required, it will be the life-ready, critical thinkers who stand the test of time and find new ways to add value.

We are prepared to do things differently at OneSchool Global to deliver on this vision. We challenge traditional and outdated pedagogical models. Our learning centres, the way we embed technology in them, and ultimately our students, are a testament to this.

## OneSchool Global Mission Statement

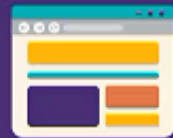


### **“Learning to Learn”**

The School is committed to creating and delivering learning programmes that meet the educational needs of each student, and to nurture the attitudes and skills necessary for the continual learning and personal growth throughout life.

“Learning to Learn” means to use learning as a tool whereby students are equipped with the ability to think critically, process information perceptually, analyse data accurately, and evaluate situations intelligently in order that they fulfil their true potential.

## The Assignment



- is a contract that establishes
  - what the teacher needs to teach
  - what the student can learn on their own
  - what the student needs to do to demonstrate their learning
- is anchored by a Big Question
- aligns to the curriculum
- provides choice and differentiated pathways
- defines learning intentions, success criteria
- includes clear checkpoints, deadlines and feedback
- contains formative/summative assessments
- is shared between students, teachers and campuses

## The Study



- is student led
- is where students make a plan and execute it
- is time to work on tasks contained in The Assignment
- includes focused, semi-collaborative and collaborative learning
- enables coaching from teachers and peers

## The Tutorial



- provides students with 1:1 (or small group) specialist support
- can be requested by students or teachers
- enables individualised support/extension

## The Lesson



- is teacher led
- is time for 'what the teacher needs to teach'
- enables direct instruction
- involves the whole class

*Learning to Learn*

# A Quality OSG Student...



## Lives the Values:

Committed to displaying integrity and care & compassion, is respectful of others and takes responsibility for their actions.



## Is Self-Directed:

Understands the Learning to Learn Framework and is driven by personal goals, initiative, and self-discipline to grow and achieve.



## Is a Team Player:

Builds strong connections with educators, on foundations of trust and respect. Is collaborative and supportive of others in achieving common goals.



## Is Diligent:

Committed to excellence, hard work and timeliness in all responsibilities and tasks.



## Is a Problem Solver:

Seeking innovative, creative and effective solutions to challenges and obstacles.



## Takes Ownership:

Wears school uniform with respect, manages distractions maturely, and makes good decisions about behaviour and attitude.



## Has a Positive Attitude:

Applies constructive thinking and has a positive approach to school.



A global education ecosystem that develops life-ready students who learn how to learn, and achieve.





## OneSchool Global Values



At OneSchool Global each student, parent and staff member shall uphold the values of the School which include:

**Integrity** – uprightness, honesty and decorous conduct, governed by the Holy Bible,

**Care and Compassion** – kindness, consideration and generosity to all,

**Respect** – for all people, property, opinions and those in authority,

**Responsibility** – for our actions, progress and the environment and,

**Commitment** – to self-discipline and the pursuit of excellence.



## Welcome Message



Welcome to OneSchool Global UK Maidstone Campus

Located just south of Maidstone, the campus boasts superb facilities and beautiful surroundings. Judged to be 'Outstanding in all Areas' at its last school inspection, we strive to maintain a culture of excellence and achievement, with our students at the centre of all that we stand for.

Our warm and welcoming atmosphere is immediately apparent as soon as you enter the school, and our strong sense of community combined with our ethos and values means that we can provide a secure and forward-thinking learning environment where both staff and students thrive.

The vision of OneSchool is to deliver "a global education ecosystem that develops life-ready students who learn how to learn". We aim to enable our young men and women to achieve their true potential, providing them with the skills and qualities they need to flourish in a rapidly changing world. Students throughout the school have the freedom to study at their own pace in our Primary and Secondary Learning Centres where they can truly take ownership of the way they choose to work, the emphasis being on self-direction and independent learning with teachers always on hand to motivate, encourage and advise.

Our students are a testament to the success of Maidstone Campus; all our staff, with the wholehearted support of the stakeholders and trustees, work towards the same thing – a desire that by the time they finish their school years, our young people leave with a sense of achievement and success, well-prepared for what the future holds.

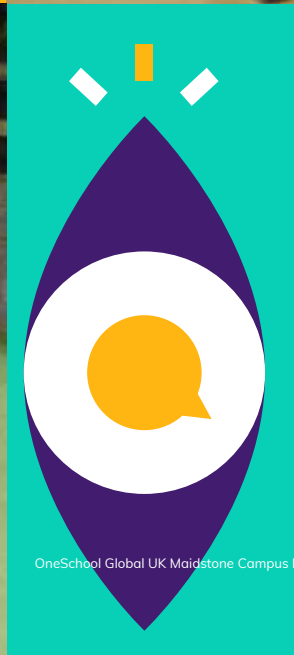
### Mr Ken Lynes

Lead Campus Administrator



Campus Principal  
Mrs Keryn van der Westhuizen







## Our History



Maidstone Campus sprung out of a refurbished industrial building near the centre of Maidstone, in which students aged 11 to 17 from local study centres in Canterbury, Dartford, Gillingham, Hastings, Maidstone and Tunbridge Wells had been brought together to be taught under one roof in 2004.

The improved results and economies of scale achieved by teaching larger classes, and thus the capacity to attract better-qualified teachers, soon led us to take the next step. In 2007 we built a brand new, purpose-designed school for 100 students from Year 7 upwards in Linton, near Maidstone, naming it Linton Park Campus. An original building on the same plot was renovated and we began teaching Year 6. Twelve years later we are still proving the benefits every day!

Soon afterwards we were joined by students from SE London boroughs, further increasing our numbers. Year 5 joined in 2008 and a two-storey designated primary block was added, enabling us to also include primary students in Years 3 and 4.

Our campus has always been part of a global entity, enjoying the benefits of an organisation that is international whilst maintaining the personal touch of an individual campus that is sized for personal engagement. In line with all of our other campuses, we have been rebranded to reflect this so in 2019, Linton Park School was renamed OneSchool Global Maidstone Campus. This enables all associated with our schools to be able to place it in the country. What hasn't changed is the collective opportunity enabled and the close sense of community impact.

Currently we have 173 students and 32 staff.

## The Global House System



The Global House System is based around the ethos of inclusion and encouraging teamwork.

It is designed to reward academic work, effort, sporting achievements and good citizenship. It is the role of the House System to embrace all students and provide a climate of success for all.

The Global House System consists of three houses each with an assigned colour as shown below. These houses are run globally throughout our affiliated schools, meaning that we can encourage teamwork with other regions, not just within our campus, thus enhancing our students' desire to strive for their best, due to a much wider area of healthy and constructive competition.

Each student is assigned to a House and will normally remain in that House for his/her duration at the campus. Many house events and competitions are run which link to learning and help foster both teamwork and self-directed learning skills. The Global House System encourages healthy participation in activities and is well supported by staff and student leaders.



## Charitable Fundraising



At Maidstone Campus the whole community is committed to helping those less fortunate than ourselves.

There is a strong, student-led culture for fundraising and charity at Maidstone Campus. This academic year students have raised money for many charities. The majority of fundraising initiatives are student-led, with representatives from our student council coming up with ideas for school-wide events. Not only does each initiative raise hundreds of pounds for charity, but it also gives students valuable experience in organising and leadership skills.

Charitable donations made recently include:

- Poppy Appeal
- Cancer Research UK
- Macmillan Cancer Support
- Great Ormond Street Hospital
- Heart of Kent Hospice



Integrity



Care & Compassion



Respect

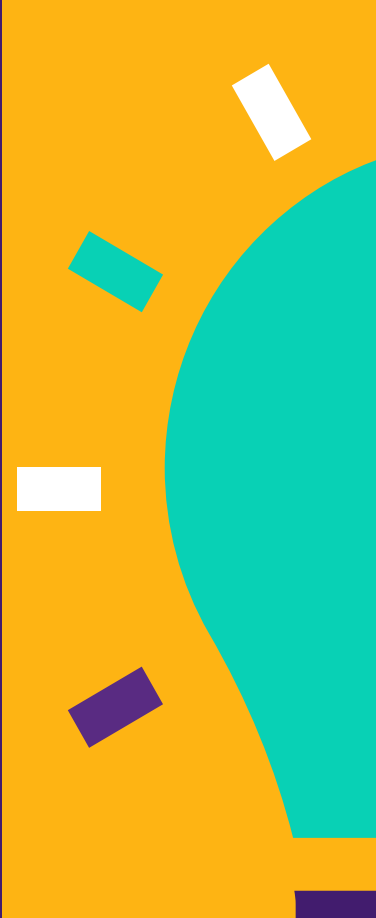
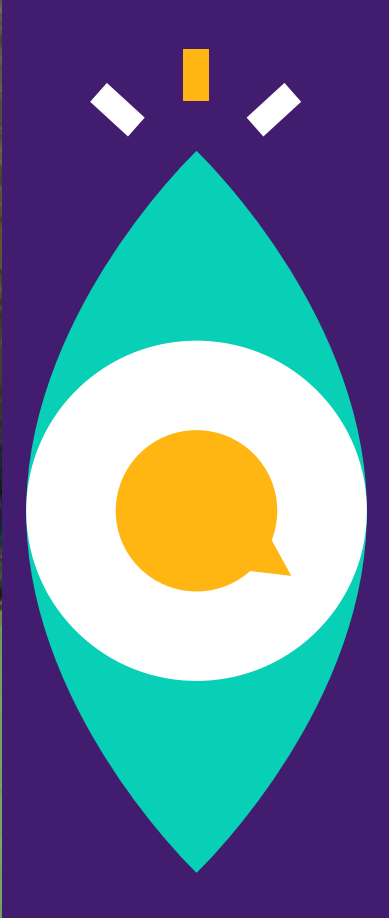


Responsibility



Commitment





“

If it is possible to become better than outstanding - I think we are becoming that!

”

# Our Curriculum



**...wholly supports the School's ethos in promoting Christian values and provides a balance, ensuring students develop academically, aesthetically, morally and physically.**

Maidstone Campus has adopted the Curriculum Policy developed by OneSchool Global UK. The curriculum is designed to ensure that every student can realise their potential. The curriculum is assignment-based, enabling the self-directed ambition of the organisation to be fulfilled. All students follow a personalised and challenging curriculum.

## Years 3-6

Art  
Design & Technology  
English  
Geography  
History  
IT  
LAMDA  
Mathematics  
MFL  
Music  
PSHE  
Physical Education  
Science

## Years 7-8

Art  
Citizenship  
Design & Technology  
English  
Geography  
History  
IT  
LAMDA  
Mathematics  
MFL  
PSHE  
Physical Education  
Science

## Years 9-11

Art, Craft & Design  
Citizenship  
Design & Technology  
English  
Food & Nutrition  
French  
Geography  
German  
History  
ICT  
LAMDA  
Mathematics  
PSHE  
Physical Education  
RSE  
Science  
Spanish

## Years 12-13

All of our students progress to the sixth form and are offered a broad range of curriculum options designed to meet the abilities and aspirations of all our learners.

Cambridge International A Level qualifications are offered in Art & Design, Design & Technology,

English, History, Geography, Mathematics, Accounts, Law, Business Studies, French and German, and Global Perspectives alongside Cambridge Technical qualifications in IT, Digital & Creative Media, and Business, a range of Level 2 qualifications, and Autodesk Fusion 360.

Additional subjects include Physical Education and PSHE, while courses such as Chef Skills, LAMDA Speaking in Public, London Institute of Banking and Finance and Extended Project Qualifications are available to students.

Digital technology, including Zoom and Canvas platforms enable campuses to collaborate with other schools for subject delivery which enables students to study subjects that would not normally be economically viable

Xello and the Careers Advantage Programme also adds a unique and high quality vocational element to our curriculum which supports all students in gaining a better understanding of their career pathway and progression routes helping to ensure they are lifeready on graduation from OneSchool Global UK and excited about embarking on future post graduate qualifications.

Extra-Curricular activities are a strength of our school. Our students have the opportunity to collaborate on extra-curricular projects and activities at campus, regional and global level. Recent highlights including our termly Choir Festival, annual Public Speaking Competition and inter campus debating opportunities. Our extra-curricular offer is a key part of our curriculum and an area of continuous growth and development for OSGUK.



# OneSchool Global Awards



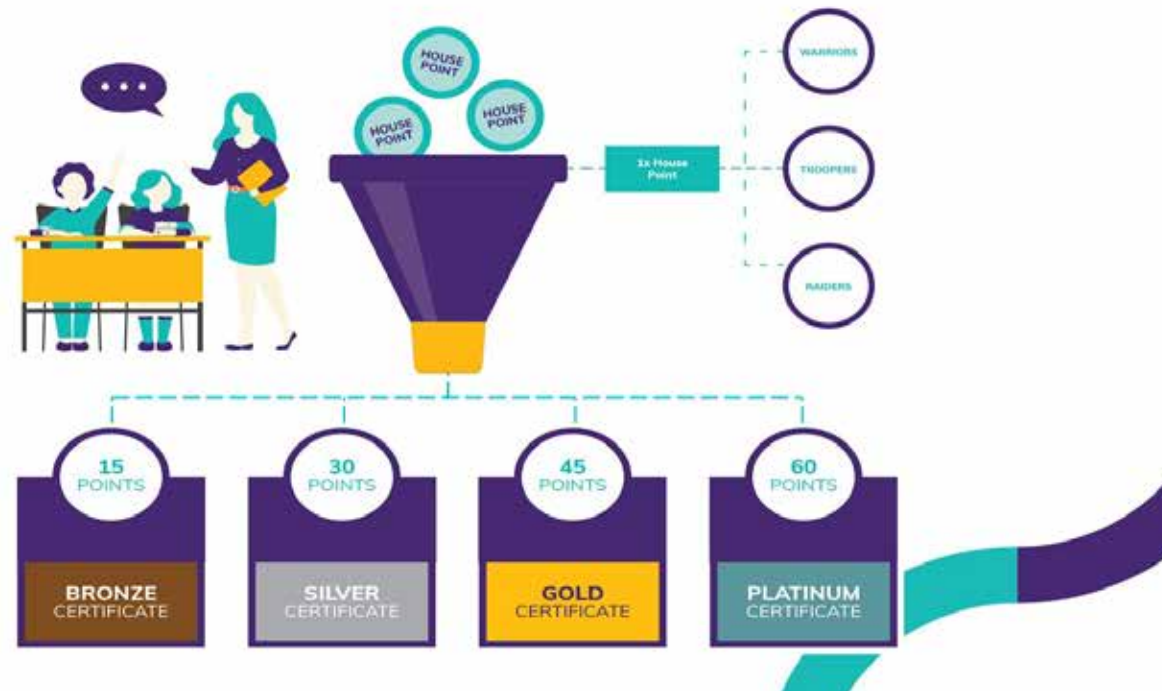
## House Points:

A House Point is given when a student demonstrates notable qualities of the OSG Student Persona, either in their academic or personal achievements.

House Points recognise the individual student and they also add to the 'House' total for the House that the student belongs to. The winning house each year is awarded the House Cup, for the Campus, Regionally and Globally.

## Merit Certificates:

When a student receives a certain number of House Points during the year, they gain a Bronze, Silver, Gold and Platinum Merit Certificate.





Hit the ground running

## Career Advancement Programme

**Bridging the gap between school and work; OneSchool Global UK offer a unique career advancement plan to all our students and this is proven to prepare them for the world of work:**

### What is CAP?

The Career Advantage Programme (CAP) provides all students with the opportunity to gain the skills and aptitude to achieve rapid success in their post-school careers.

CAP does this by:

- Providing Career Fundamentals and Business Foundations courses offered to all students in Year 12 and 13.
- Analysing the capability of each student professionally to ensure the student can effectively complete the courses.
- Sponsorship for students to carry out extra-curricular studies in the last two years of school.

### The CAP curriculum

All students in Year 12 complete a Career Fundamentals course which is a global standard for employers. For CAP students, the diploma-type courses provide a theoretical and academic rigour which underpins the students' academic programme and the career skills-based study provides practical, real-world approaches to learning and helps them to develop skills and competencies required for lifelong learning.

Visit the website to find out more

<https://www.oneschoolglobal.com/cap/>

## Beyond the classroom



### Why is CAP Important?

There is an increasing awareness globally that high school studies alone are not adequately preparing students for the modern workforce. The Career Advantage Programme is aimed at equipping our children with the necessary skills to bring positive benefits to our businesses from day one.

### Important for students:

- improving their employment opportunities
- improving the potential of earning a higher income on graduation
- empowering rapid progress along their career path

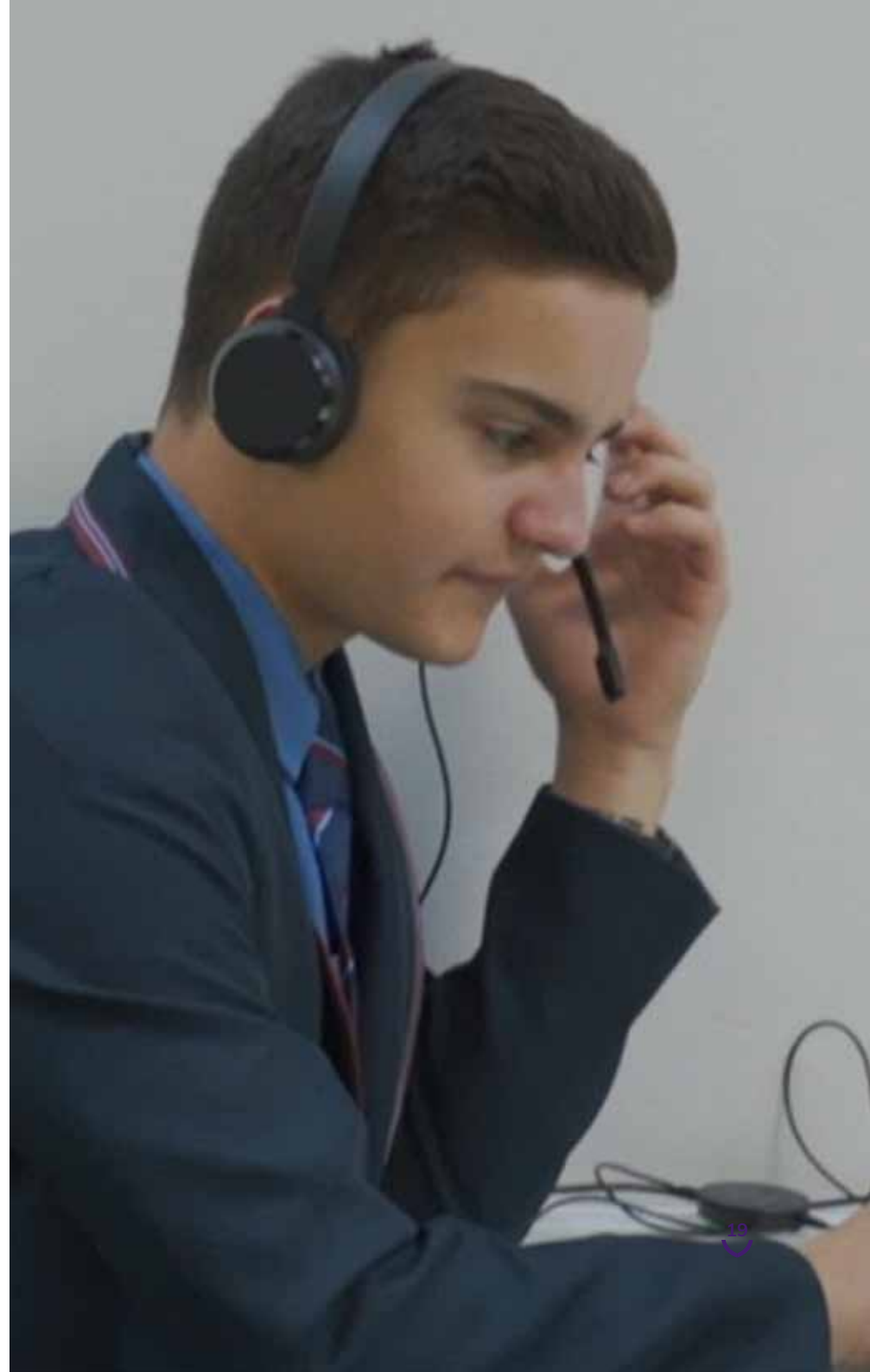
### Important for businesses:

- higher value employees that are useful from day one
- employees with an established work ethic; self-starters, self-finishers, self-motivators
- employees that understand the value of study and training

**“The innovative approach to the curriculum, teaching and learning is what makes this school outstanding because it enables all pupils to make excellent progress and achieve their very best”**



- Business Owner



# Policies and Documents



Maidstone Campus is committed to the safeguarding and protection of its students in line with national guidance. We endeavour to provide a safe and welcoming environment where all children are safe, respected and valued, as well as being underpinned by the following two key principles:

- A child-centred approach; for services to be effective they should be based on a clear understanding of the needs and views of children.
- Everyone employed and who comes into contact with children at Maidstone Campus has a responsibility in relation to safeguarding.

At Maidstone Campus we listen to students and maintain a child-centred approach to Safeguarding and Child Protection. We provide a safe environment for students both under and over 18, especially those who are considered vulnerable. All of our Policies are available upon request from our school office or via email: [maidstone@uk.oneschoolglobal.com](mailto:maidstone@uk.oneschoolglobal.com)

---

Admissions Policy

---

Anti-Bullying Policy

---

Attendance Policy

---

Complaints Procedure

---

Curriculum Policy

---

EAL Policy

---

Equal Opportunities Policy

---

Exclusions Policy

---

Fire Safety (Prevention) Policy

---

First Aid Policy

---

Health & Safety Policy

---

Learning Support (SEND) Policy

---

RSE Policy

---

Risk Assessment Policy

---

Safeguarding & Child Protection Policy

---

Safer Recruitment Policy

---

Student Discipline Policy

---

Supervision of Students Policy

---

Supporting Students with Medical Conditions

Additionally, the particulars of the arrangements for promoting student health and safety on educational trips and visits are available from the school office on request.

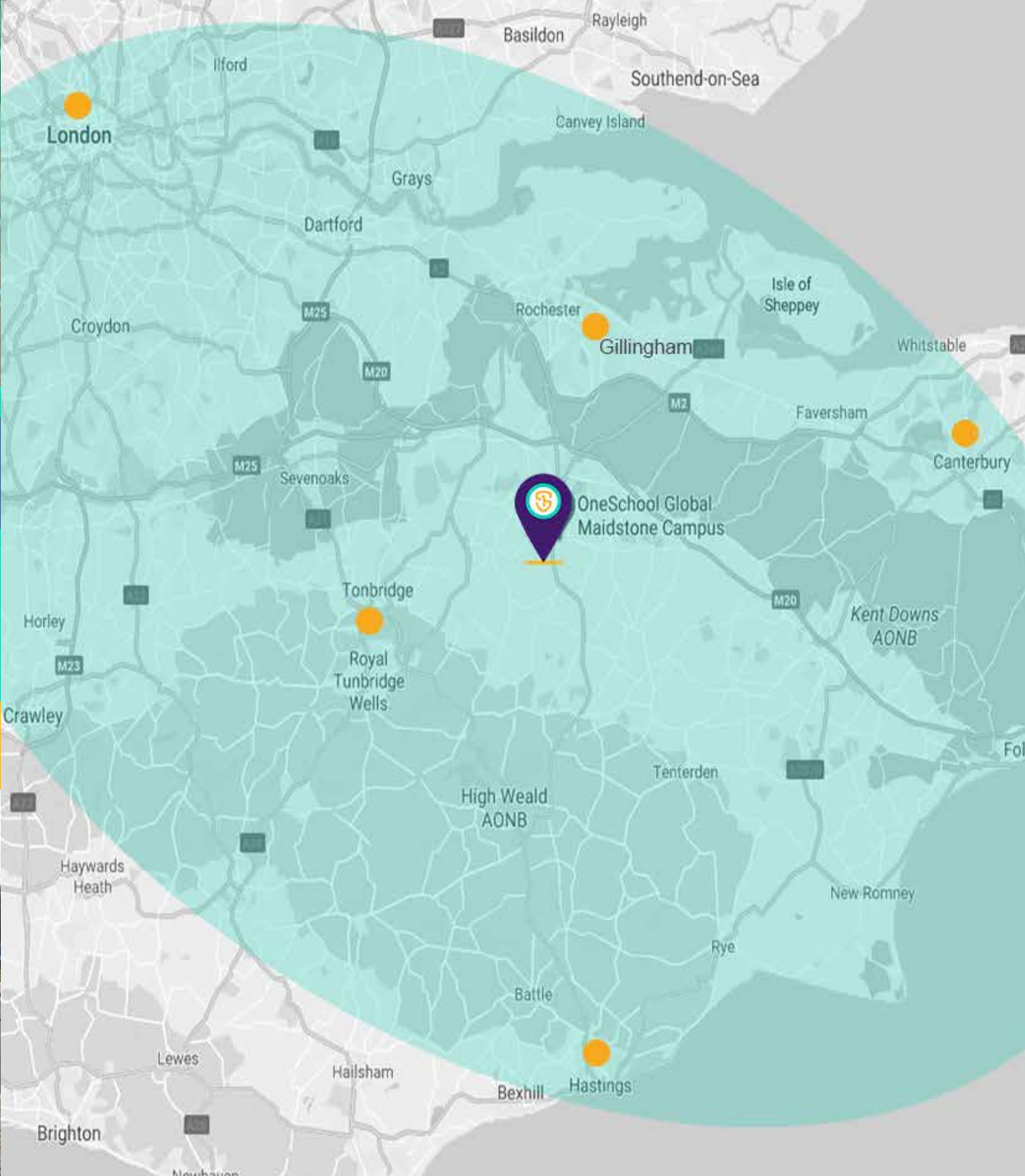
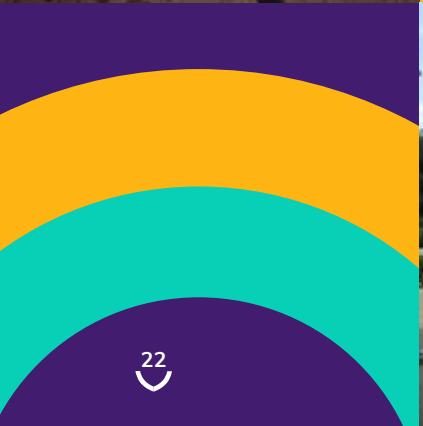
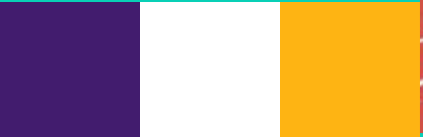
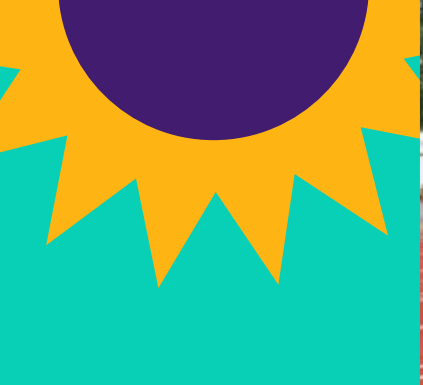
# Teachers and Staffing



All OneSchool Global UK Maidstone Campus teachers hold qualifications applicable to their post. In the absence of qualifications in some practical subjects previous experience will be considered if applicable. All staff, governors and volunteers have been subject to regulatory safer recruitment checks.

Name	Assigned Responsibilities	Qualifications
Louise Baker	Campus Admin Officer	-
Claire Bernthal	Primary Teacher	BA Classical Studies; PGCE
Janice Brennan	Primary Teacher	B.Ed (Hons) Primary Education with QTS
Paul Cairns	Premises Manager	-
Fay Carrington	Learning Support/National HLTA	HLTA
Amy Coulls	Campus Admin Officer, Exams Officer	-
Keeley Dorney	Primary Year 6	BA (Hons) English; PGCE
Victoria Hayes	Primary Teacher Year 4	BA Hons in French & Spanish. PGCE in Secondary MFL
Emma Horne	Primary Teacher Year 3	B.Ed. (Hons) Primary Education
Jane Humphrey	KS2-5 Food and Nutrition	BSc Institutional Management, PGCE
Stacey Jones	Designated Safeguard Lead Geography Teacher, Assistant Campus Principal, KS3 Lead	BSc Earth Sciences, QTS, Postgraduate Certificate in Education (Secondary)

Name	Assigned Responsibilities	Qualifications
Chris Leggat	Assistant Campus Principal/KS3-5 History/ Humanities Lead/Boys' PE/ KS5 Lead, SMHL, Deputy Designated Safeguard Lead	BA History & Sport & Exercise Sciences; Graduate Teacher Programme; NPQSL
Jayne Mattocks	PE Teacher	-
Katie Porter	HLTA	-
Penelope Smy	Invigilator and Casual Teacher	BSc Mathematics
Laura Sparks	KS2-4 DT Product Design Teacher	BA Design with QTS
John Sutton	Maths Teacher, KS4 Lead Assistant Campus Principal	BSc Sports Technology; PGCE
Keryn van der Westhuizen	Campus Principal	BSc Soil Science/Hydrology, PGCE, QTS
Angela Weddell	Learning Support Coordinator	7 O Levels; Level 3 Diploma in Early Learning
Sophie Wells	Senior Campus Admin Officer	-
Dean Wheeler	PE Teacher	B.Ed Secondary Education with QTS
Charlotte Williams	KS2 Lead, Assistant Campus Principal	-



# School Information



## OneSchool Global UK Maidstone Campus

Heath Road, Maidstone ME17 4HT

- Tel: 03000 700 507
- [maidstone@uk.oneschoolglobal.com](mailto:maidstone@uk.oneschoolglobal.com)
- [oneschoolglobal.com/maidstone](https://oneschoolglobal.com/maidstone)

Monday to Friday 08:45 - 15:00

Proprietor: **OneSchool Global UK**

OSG UK No: 507  
Examination Centre No. 61310  
Charity No: 1181301  
DfE No: 886/6104

### Complaints and Exclusions (2023-2024):

There were 4 informal complaints and no exclusion during the academic year 2023-2024.

### CA Team

Mr Ken Lynes (Lead CA)  
Mr Myles Woodcock

### CA Board Members

Mr Charlie Campbell  
Mr Glyn Hathorn  
Mr Richard Beattie  
Mr Kevin Devenish

---

### Campus Principal

Mrs Keryn van der Westhuizen

---

### OneSchool Global UK Representatives

Mr Ben Woodcock  
Mr Christopher Sweeney

---

### Holiday/Out of Hours Contact

Mr Ken Lynes Tel: 07584 231535  
Email: [ken.lynes@uk.oneschoolglobal.com](mailto:ken.lynes@uk.oneschoolglobal.com)

---

### Correspondence for the Chair of the Trustees should be addressed to the Principal Office

Mr Ben Woodcock  
OneSchool Global UK Maidstone Campus  
The Precinct Warwick  
Poseidon Way  
Warwick  
CV34 6BY

For further information and the school calendar please visit our website: [oneschoolglobal.com/maidstone](https://oneschoolglobal.com/maidstone)  
Visit the OneSchool Global UK website: [oneschoolglobal.com](https://oneschoolglobal.com)



It is clear that self-directed learning has become embedded in the culture and I can see that the staff and children are supporting it.

Good positive atmosphere and great learning environment. Student behaviour is impeccable. Staff excellent. Thank you for having me.

The campus was relatively quiet, shingling clean and tidy. Students were in the main focus zone. There was a good mix of collaborative and individual learning styles being demonstrated.









# OneSchool Global

*Learning to learn*

## OneSchool Global UK Maidstone Campus

Heath Road  
Maidstone  
ME17 4HT  
Tel: 03000 700 507  
Email: [maidstone@uk.oneschoolglobal.com](mailto:maidstone@uk.oneschoolglobal.com)

## OneSchool Global UK

The Precinct Warwick  
Poseidon Way  
Warwick  
CV346BY  
Tel. 03300 555 600  
Email: [support@uk.oneschoolglobal.com](mailto:support@uk.oneschoolglobal.com)