



Colchester Campus Prospectus

2024-2025




Introduction

This School is a registered and accredited Independent School established to provide a quality education to the UK community and, in particular, to Brethren students.

The School's Ethos, Values Statement and Guiding Principles govern the School and are reflected in our policies and procedures, all of which meet statutory and registration requirements for Independent Schools.

Contents

About OneSchool Global	4	
OneSchool Global Ethos	5	
OneSchool Global Vision and Mission Statements	6	
Learning to Learn Framework	7	
Student Persona	8	
OneSchool Global Values	9	
Welcome	10	
History	12	
Global House System	13	
Our Curriculum	16	
OneSchool Global Awards	17	
Career Advancement Programme	18	
Policies	20	
Teachers and Staffing	21	
School Information	22	
Testimonials	24	

About OneSchool Global UK

OneSchool Global is a global school, with over 120 campuses in 20 countries, including cities such as New York, Paris, Sydney, Rome, Auckland, Copenhagen, Los Angeles and San Francisco.

With an innovative approach to learning, delivered in cutting-edge, technology-empowered physical and digital learning environments, OneSchool Global is preparing life-ready students who learn how to learn, and achieve.

Our self-directed learning model places students at the centre of all that we do. We challenge traditional and dated pedagogy and embrace technology to deliver the best possible learning outcomes for our students.

OneSchool Global recruits and develops high quality teachers. Our teachers partner with our students in their learning and rather than being considered the 'sage on the stage', they act as both teacher and coach to build students' skills, resilience and independence.

Our in-house Teacher Academy provides teachers with the training they need to be the best they can be. We provide teachers with the skills they need to be successful at OneSchool Global and skills that will make them highly capable and competent in teaching in a digital world.

OneSchool Global is a school that lives its values and is guided by the School's ethos. The School is generously supported via the donation of time and financial support from members of the Plymouth Brethren Christian Church.



Click on the OneSchool logo to learn more about how this cutting-edge schooling system was inspired and how this awesome vision is being realised.





OneSchool Global Ethos

At OneSchool Global, we are committed to a culture where students are encouraged to develop their full potential and acquire the discipline of learning how to learn while upholding Christian teachings and beliefs.

The truth and authority of the Holy Bible and strong family values underpin the commitment of the School to provide quality in every facet of education - curriculum, teachers, facilities, management, and discipline - in a safe and caring environment.

OneSchool Global Vision Statement



A global education ecosystem that develops life-ready students who learn how to learn and achieve.

To ensure our students are life-ready, we need to teach differently. To be life-ready in today's world, our students need to learn how to learn. To be life ready, our students need to develop independent and critical thinking skills, and skills such as teamwork and collaboration

It is these skills that form an aptitude base that allows a student to adapt. Most importantly, these critical skills are transferable. When industry changes, when entire fields of work and job types are no longer required, it will be the life-ready, critical thinkers who stand the test of time and find new ways to add value.

We are prepared to do things differently at OneSchool Global to deliver on this vision. We challenge traditional and outdated pedagogical models. Our learning centres, the way we embed technology in them, and ultimately our students, are a testament to this.

OneSchool Global Mission Statement



“Learning to Learn”

The School is committed to creating and delivering learning programmes that meet the educational needs of each student, and to nurture the attitudes and skills necessary for the continual learning and personal growth throughout life.

“Learning to Learn” means to use learning as a tool whereby students are equipped with the ability to think critically, process information perceptually, analyse data accurately, and evaluate situations intelligently in order that they fulfil their true potential.

The Assignment



- is a contract that establishes
 - what the teacher needs to teach
 - what the student can learn on their own
 - what the student needs to do to demonstrate their learning
- is anchored by a Big Question
- aligns to the curriculum
- provides choice and differentiated pathways
- defines learning intentions, success criteria
- includes clear checkpoints, deadlines and feedback
- contains formative/summative assessments
- is shared between students, teachers and campuses

The Study



- is student led
- is where students make a plan and execute it
- is time to work on tasks contained in The Assignment
- includes focused, semi-collaborative and collaborative learning
- enables coaching from teachers and peers

The Tutorial



- provides students with 1:1 (or small group) specialist support
- can be requested by students or teachers
- enables individualised support/extension

The Lesson



- is teacher led
- is time for 'what the teacher needs to teach'
- enables direct instruction
- involves the whole class

Learning to Learn

A Quality OSG Student...



Lives the Values:

Committed to displaying integrity and care & compassion, is respectful of others and takes responsibility for their actions.



Is Self-Directed:

Understands the Learning to Learn Framework and is driven by personal goals, initiative, and self-discipline to grow and achieve.



Is a Team Player:

Builds strong connections with educators, on foundations of trust and respect. Is collaborative and supportive of others in achieving common goals.



Is Diligent:

Committed to excellence, hard work and timeliness in all responsibilities and tasks.



Is a Problem Solver:

Seeking innovative, creative and effective solutions to challenges and obstacles.



Takes Ownership:

Wears school uniform with respect, manages distractions maturely, and makes good decisions about behaviour and attitude.



Has a Positive Attitude:

Applies constructive thinking and has a positive approach to school.



A global education ecosystem that develops life-ready students who learn how to learn, and achieve.



OneSchool Global Values



At OneSchool Global each student, parent and staff member shall uphold the values of the School which include:

Integrity – uprightness, honesty and decorous conduct, governed by the Holy Bible,

Care and Compassion – kindness, consideration and generosity to all,

Respect – for all people, property, opinions and those in authority,

Responsibility – for our actions, progress and the environment and,

Commitment – to self-discipline and the pursuit of excellence.





Welcome Message



Welcome to OneSchool Global UK Colchester Campus.

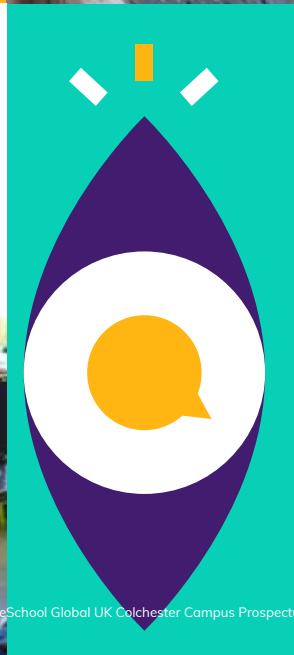
Our school is in the picturesque Essex and Suffolk border village of Stoke by Nayland, records of which go back to AD 948 with a reference in the Domesday book of 1086.

Notwithstanding the historic setting the school is at the cutting edge of a forward-thinking global educational ecosystem fully implementing self-directed teaching methodology. Our aim is to be ahead of the game achieving excellence in all areas of the school's functions. We are also continuing to improve the positive culture through the Squad SbN initiative. The end result is to produce students that are life ready and prepared for the world of work.

The school has exceptional facilities including a bespoke sizeable learning area, a fine kitchen, science laboratory, art room, ICT throughout, and tennis courts and large playing fields, plus a good-sized hall.

Mr Angus Pooley
Lead Campus Administrator







Our history



Colchester Campus had its beginnings in March 1998 being called Larchcroft School subsequently acquiring a study centre in Sidegate Lane Ipswich in 2000, then a converted business premises at Larchcroft Road Ipswich in 2005.

These facilities provided for students from years 7–13. In 2006 primary years 3–6 were added using bought in portacabins which cramped the tight site somewhat. In 2008 a kindergarten premises, Oak House, in Colchester was acquired being made suitable for the primary students which meant operating a two-site school.

The current site was acquired as a Middle School from Suffolk county Council in July 2013 which amalgamated both the schools together operating as one through school.

During the summer of 2019 the school implemented the new One School Global rebranding exercise. This reflects the ever increasing pace of learning environment development.

The Global House System



The Global House System is based around the ethos of inclusion and encouraging teamwork.

It is designed to reward academic work, effort, sporting achievements and good citizenship. It is the role of the House System to embrace all students and provide a climate of success for all.

The Global House System consists of three houses each with an assigned colour as shown below. These houses are run globally throughout our affiliated schools, meaning that we can encourage teamwork with other regions, not just within our campus, thus enhancing our students' desire to strive for their best, due to a much wider area of healthy and constructive competition.

Each student is assigned to a House and will normally remain in that House for his/her duration at the campus. Many house events and competitions are run which link to learning and help foster both teamwork and self-directed learning skills. The Global House System encourages healthy participation in activities and is well supported by staff and student leaders.



Charitable Fundraising

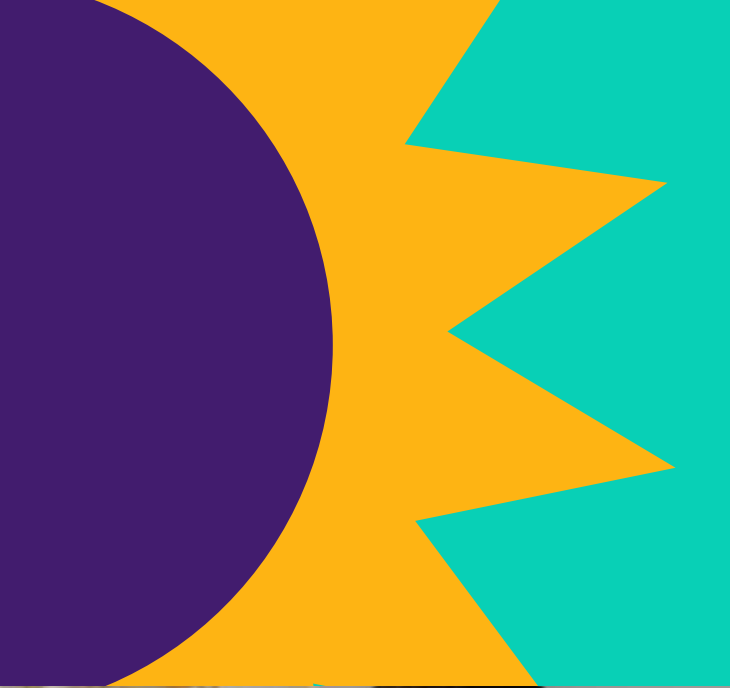


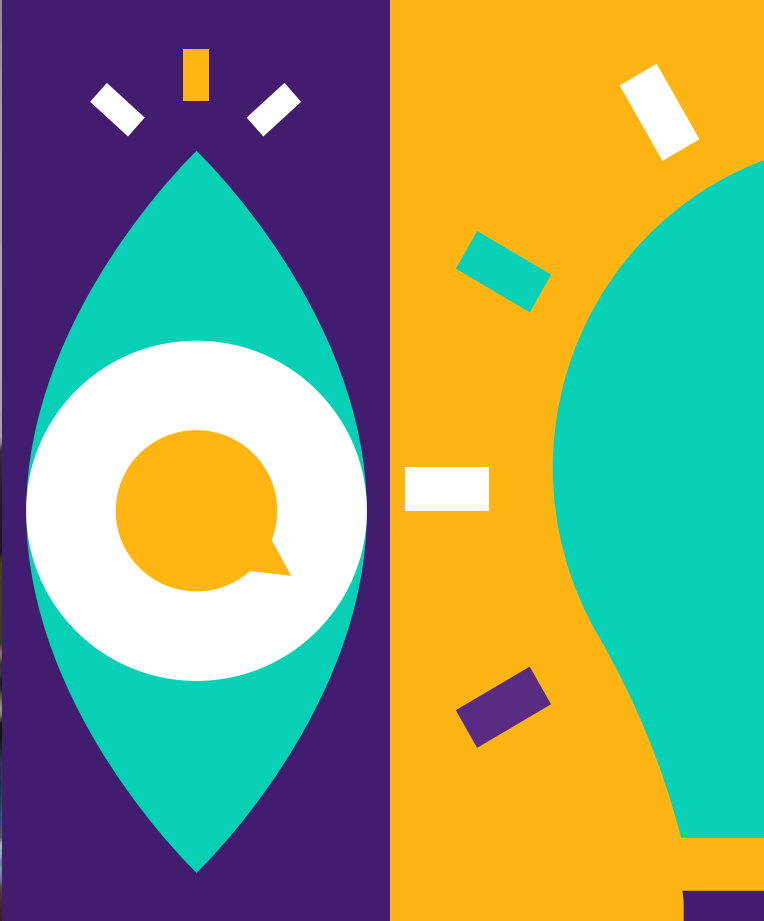
At Colchester Campus the whole community is committed to helping those less fortunate than ourselves.

Students are encouraged to participate in the wider community. Charity is core to our ethos and fundraising activities are encouraged. These activities develop a responsible attitude and an understanding of the ramifications of actions upon environments and humanity.

Charitable donations made recently include:

- Anglian Air Ambulance
- Ukraine
- British Heart Foundation
- Macmillan Cancer Research
- Save the Children
- Colchester Food Bank





“ We are extremely thankful for the way our many grandchildren with their diverse aptitudes have been given an excellent education at this Campus. ”

Our Curriculum



...wholly supports the School's ethos in promoting Christian values and provides a balance, ensuring students develop academically, aesthetically, morally and physically.

Colchester Campus has adopted the Curriculum Policy developed by OneSchool Global UK. The curriculum is designed to ensure that every student can realise their potential. The curriculum is assignment-based, enabling the self-directed ambition of the organisation to be fulfilled. All students follow a personalised and challenging curriculum.

Years 3-6

Art
Design & Technology
English
Geography
History
IT
LAMDA
Mathematics
MFL
Music
PSHE
Physical Education
Science

Years 7-8

Art
Citizenship
Design & Technology
English
Food & Nutrition
Geography
History
IT
LAMDA
Mathematics
MFL
PSHE
Physical Education
RSE
Science

Years 9-11

Art, Craft & Design
Citizenship
Design & Technology
English
Food & Nutrition
French
Geography
German
History
ICT
LAMDA
Latin
Mathematics
PSHE
Physical Education
RSE
Science

Years 12-13

All of our students progress to the sixth form and are offered a broad range of curriculum options designed to meet the abilities and aspirations of all our learners.

Cambridge International A Level qualifications are offered in Art & Design, Design & Technology, English, History, Geography, Mathematics, Accounts, Law, Business Studies, French and German, and Global Perspectives alongside Cambridge Technical qualifications in IT, Digital & Creative Media, and Business, a range of Level 2 qualifications, and Autodesk Fusion 360.

Additional subjects include Physical Education and PSHE, while courses such as Chef Skills, LAMDA Speaking in Public, London Institute of Banking and Finance and Extended Project Qualifications are available to students

Digital technology, including Zoom and Canvas platforms enable campuses to collaborate with other schools for subject delivery which enables students to study subjects that would not normally be economically viable.

Xello and the Careers Advantage Programme also adds a unique and high quality vocational element to our curriculum which supports all students in gaining a better understanding of their career pathway and progression routes helping to ensure they are life-ready on graduation from OneSchool Global UK and excited about embarking on future post graduate qualifications.

Extra-Curricular activities are a strength of our school. Our students have the opportunity to collaborate on extra-curricular projects and activities at campus, regional and global level. Recent highlights including our termly Choir Festival, annual Public Speaking Competition and inter campus debating opportunities. Our extra-curricular offer is a key part of our curriculum and an area of continuous growth and development for OSGUK.

OneSchool Global Awards



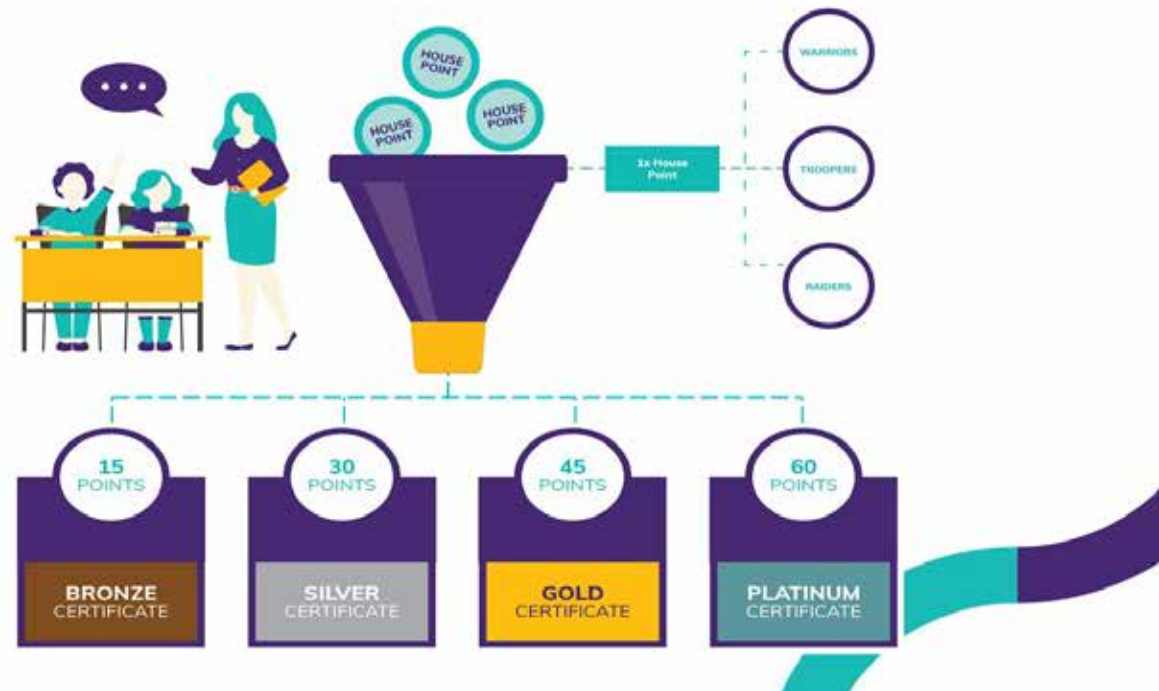
House Points:

A House Point is given when a student demonstrates notable qualities of the OSG Student Persona, either in their academic or personal achievements.

House Points recognise the individual student and they also add to the 'House' total for the House that the student belongs to. The winning house each year is awarded the House Cup, for the Campus, Regionally and Globally.

Merit Certificates:

When a student receives a certain number of House Points during the year, they gain a Bronze, Silver, Gold and Platinum Merit Certificate.





**Hit the ground
running**

Career Advancement Programme



Bridging the gap between school and work; OneSchool Global UK offer a unique career advancement plan to all our students and this is proven to prepare them for the world of work:

What is CAP?

The Career Advantage Programme (CAP) provides all students with the opportunity to gain the skills and aptitude to achieve rapid success in their post-school careers.

CAP does this by:

- Providing career fundamentals and business foundations courses offered to all students in Year 12 and 13.
- Analysing the capability of each student professionally to ensure the student can effectively complete the courses.
- Sponsorship for students to carry out extra-curricular studies in the last two years of school.

The CAP curriculum

All students in Year 12 complete a career fundamentals course which is a global standard for employers. For CAP students, the diploma-type courses provide a theoretical and academic rigour which underpins the students' academic programme and the career skills based study provides practical, real-world approaches to learning and helps them to develop skills and competencies required for lifelong learning.

Visit the website to find out more

<https://www.oneschoolglobal.com/cap/>

Beyond the classroom



Why is CAP Important?

There is an increasing awareness globally that high school studies alone are not adequately preparing students for the modern workforce. The Career Advantage Programme is aimed at equipping our children with the necessary skills to bring positive benefits to our businesses from day one.

Important for students:

- improving their employment opportunities
- improving the potential of earning a higher income on graduation
- empowering rapid progress along their career path

Important for businesses:

- higher value employees that are useful from day one
- employees with an established work ethic; self-starters, self-finishers, self-motivators
- employees that understand the value of study and training

“The innovative approach to the curriculum, teaching and learning is what makes this school outstanding because it enables all pupils to make excellent progress and achieve their very best”



- Business Owner



Policies and Documents



Colchester Campus is committed to the safeguarding and protection of its students in line with national guidance. We endeavour to provide a safe and welcoming environment where all children are safe, respected and valued, as well as being underpinned by the following two key principles:

- A child-centred approach; for services to be effective they should be based on a clear understanding of the needs and views of children.
- Everyone employed and who comes into contact with children at Colchester Campus has a responsibility in relation to safeguarding.

At Colchester Campus we listen to students and maintain a child-centred approach to Safeguarding and Child Protection. We provide a safe environment for students both under and over 18, especially those who are considered vulnerable.

Admissions Policy

Anti-Bullying Policy

Attendance Policy

Complaints Procedure

Curriculum Policy

EAL Policy

Equal Opportunities Policy

Exclusions Policy

Fire Safety (Prevention) Policy

First Aid Policy

Health & Safety Policy

Learning Support (SEND) Policy

RSE Policy

Risk Assessment Policy

Safeguarding & Child Protection Policy

Safer Recruitment Policy

Student Discipline Policy

Supervision of Students Policy

Supporting Students with Medical Conditions

Additionally, the particulars of the arrangements for promoting student health and safety on educational trips and visits are available from the school office on request.

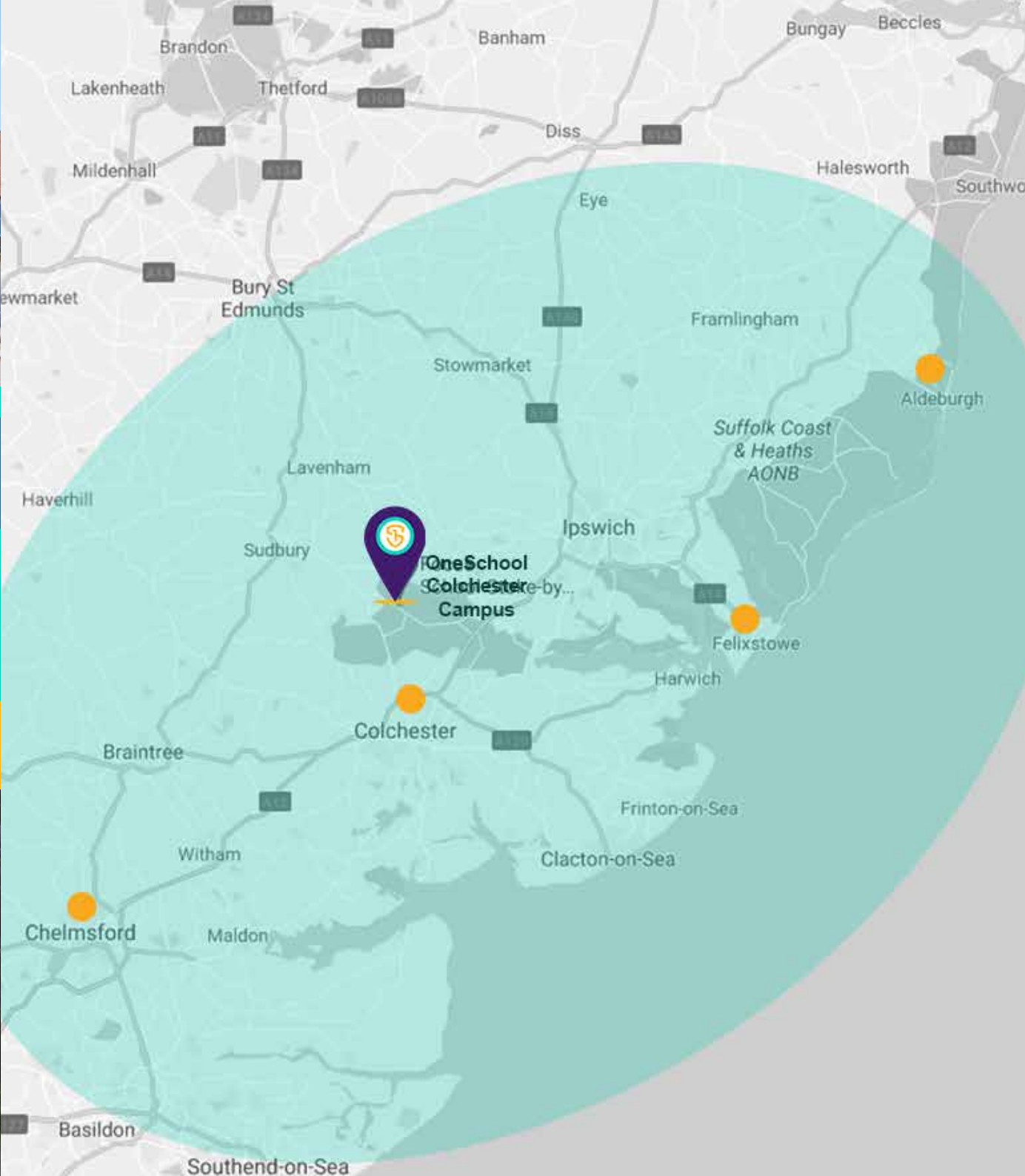
Teachers and Staffing



At OneSchool Global UK Colchester Campus teachers hold qualifications applicable to their post. In the absence of qualifications in some practical subjects previous experience will be considered if applicable. All staff, governors and volunteers have been subject to regulatory safer recruitment checks.

Name	Assigned Responsibilities	Qualifications
Nicole Andrews	LSCo, DDSL HLTA, Mental Health Lead	DSMHL
Rachael Billingham	Maths Teacher, MAP Champion, Numeracy Lead	BSc (Hons), PGCE
Anne Brown	PE Teacher, MACo, EPQ/HPQ Coordinator	BA (Hons), PGCE
Luke Clark	Assistant Campus Principal (T&L), KS3/4 Lead, History Teacher, ARHOD History, Digital Learning Coach, E-Safety Coordinator	BA (Hons)
Emma Cook	Teaching Assistant, Primary Lexia Champion	B Ed
Alex Darren	Facilities Manager, H&S Manager	IOSH
Emily Shoesmith-Dean	Science Teacher	BSc (Hons)
Sara Haines	Primary Teacher, KS2 lead, ARHOD Primary Phonics	B. Ed (Hons), NPQSL
Susan Henshall	Teaching Assistant, COPE/ASDAN Facilitator	ENB Teaching/Assessing BA, BSc
Niamh Hughes	Primary Teacher, Primary MAP Champion	BA QTS (Hons)

Name	Assigned Responsibilities	Qualifications
Emma Johnstone	Primary Teacher, Assistant MACo, RHOD Primary English	BA (Hons), PGCE, NPQSL and MCCT
Tess Khatri	Primary Teacher	PGCE, BSc
Kay Lawrence	Science, Art, Food technician	BSc (Hons), BA Open, DipGeoSci
Elizabeth Lloyd	Lead Administrator, Exams Officer, Legal & Compliance Officer	-
Mark Neale	Design & Technology Teacher, H&S Champion	BSc, PGCE
Aliah Plaster	English Teacher, Lamda Lead	PGCE
Roxanne Robson	Art & Photography Teacher	BA (Hons)
Daynah Roper	HLTA, PHSE/SMSC Lead	BA (Hons)
Mark Sawtell	Deputy Campus Principal, DSL, KS5 Lead, PE, Geography, Citizenship Teacher	BA (Hons) NPQHL
Heather Skinner	Administrator, Receptionist	-
Samantha Tyrrell	Campus Principal, DDSL	BSc (Hons), PGCE, NPQSL



School Information



OneSchool Global UK Colchester Campus

Sudbury Road, Stoke By Nayland,
Colchester CO6 4RW

- 01206 264230
- colchester@uk.oneschoolglobal.com
- oneschoolglobal.com/colchester

Monday to Friday 8:45 - 15:00

Proprietor: **OneSchool Global UK**

OSG UK No: 412
Examination Centre No. 19244
Charity No: 1181301
DfE No: 935/6082

Complaints and Exclusions (2023-2024):

There were no complaints or exclusions during this academic year 2023-2024.

CA Team	Mr Angus Pooley (Lead CA) Mr Kevin Bradshaw
Campus Board Members	Mr Chris Naphine Mr David White Mr Murray Carlyon Mr Roscoe Price Mr Tim Goody
Campus Principal	Mrs Samantha Tyrrell
OneSchool Global UK Representatives	Mr Ben Woodcock - Regional Team Leader Mrs Sarah Bennett - Regional Principal
Holiday/Out of Hours Contact	Mr Angus Pooley angus.pooley@uk.oneschoolglobal.com
Correspondence for the Chair of the Trustees should be addressed to the Principal Office	Mr Ben Woodcock OneSchool Global UK Colchester Campus The Precinct Warwick Poseidon Way Warwick CV34 6BY

For further information and the school calendar please visit our website: oneschoolglobal.com/colchester
Visit the OneSchool Global UK website: www.oneschoolglobal.com



As parents we are so grateful that our child has a place in the OneSchool Colchester Campus. We respect and can see the hard work and effort put in by teachers, staff, and management. It's been amazing to see the awards our child has achieved and the development of our child in all areas since joining the school. We have got a teacher and school that clearly has a mission to win.

Parent

Since joining Colchester Campus I have been overwhelmed by the warm and friendly attitude shown by both staff and pupils. Everyone makes you feel part of a team creating a calming and purposeful environment to work in.

Teacher

My philosophy of learning has been transformed since I started working at Colchester Campus. Teachers are constantly challenged to reflect on their role in the students learning journey. We are encouraged to master new skills and embrace cutting edge technology. Squad Colchester provides a stimulating and happy place to work.

Teacher

Our new employee came straight into the workplace from school displaying characteristic self-confidence but also the benefits of a disciplined regime in her presentation and clarity of focus. There was no evident hiatus between school life and work as she set herself to learn products and procedures, quickly fitting into teamwork and company culture which she was able to represent to all customers in her role in customer services.

She has learnt the art of dedication to duty, holding her concentration and always willing to do the extra. We therefore appreciate the input of One School learning in delivering an excellent employee.

Business Owner







OneSchool Global

Learning to learn

OneSchool Global UK Colchester Campus

Sudbury Road,
Stoke by Nayland,
Colchester
CO6 4RW
Tel: 01206 264230
Email: colchester@uk.oneschoolglobal.com

OneSchool Global UK

The Precinct Warwick
Poseidon Way
Warwick
CV346BY
Tel. 0330 055 5600
Email: support@uk.oneschoolglobal.com