

# Safeguarding and Child Protection Policy

## Northern Ireland

<b>Policy Code</b> QSC/65	<b>Authorisation Date</b> January 2024	<b>Next Review Date</b> October 2024
<b>Enquiries Contact:</b> support@oneschoolglobal.com	<b>Approval Authority</b> OSG UK Board	<b>Policy Author</b> Kimberley Hutton
<b>Associated Documents</b> Anti-Bullying Policy-UN Convention on Rights of the Child 1989 The Children (Northern Ireland) Order 1995-Department of Education (Northern Ireland) guidance "Pastoral Care in Schools- Child Protection" (DENI Circular 99/10) Area Child Protection Committees' Regional Policy and Procedures (2005). <u><b>DE Guidance - School Development Planning 2020/21 –</b></u>		

## CONTENTS

<b>1</b>	<b>Our School's Child Protection Ethos and Key Principles of Safeguarding</b>
<b>2</b>	<b>Related Policies</b>
<b>3</b>	<b>The School Safeguarding Team</b>
<b>4</b>	<b>Definitions of Harm</b>
<b>5</b>	<b>Responding to a Safeguarding Concern</b>
<b>6</b>	<b>Consent, Confidentiality, Information Sharing and Record Keeping</b>
<b>7</b>	<b>Safe Recruitment Procedures</b>
<b>8</b>	<b>Code of Conduct</b>
<b>9</b>	<b>The Preventative Curriculum</b>
<b>10</b>	<b>Monitoring and Evaluation</b>
<b>11</b>	<b>Appendices</b>
	<b>Appendix 1 Specific Types of Abuse</b>
	<b>Appendix 2 Children with Increased Vulnerabilities</b>
	<b>Appendix 3 Signs and Symptoms of Child Abuse</b>
	<b>Appendix 4 How a Parent Can Make a Complaint</b>

	<b>Appendix 5 Procedure Where the School Has Concerns about Possible Abuse</b>
	<b>Appendix 6 Dealing with Allegations of Abuse against a Member of Staff</b>

## 1. CHILD PROTECTION ETHOS

- We at OneSchool Global UK have a responsibility for the safeguarding and child protection of the children in our care and we will carry out this duty by providing a caring, supportive and safe environment, where each child is valued for his or her unique talents and abilities, and in which all our young people can learn and develop to their full potential. All staff, including all staff, permanent or temporary, paid, unpaid, teaching/non-teaching and volunteers should be alert to the signs of possible abuse and should know the procedures to be followed. This policy sets out guidance on the action, which is required where abuse or harm to a child is suspected and outlines referral procedures within our school.

### Key Principles of Safeguarding and Child Protection

The general principles, which underpin our work, are those set out in the UN Convention on the Rights of the Child and are enshrined in the Children (Northern Ireland) Order 1995, “Co-operating to safeguard children and young people in Northern Ireland” (DHSSPSNI, 2017), the Department of Education (Northern Ireland) guidance “Safeguarding and Child Protection in Schools” Circular 2017/04 (Updated September 2023) and the SBNI Core Child Protection Policy and Procedures (2017).

The following principles form the basis of our Child Protection Policy:

- The child or young person’s welfare is paramount;
- The voice of the child or young person should be heard;
- Parents are supported to exercise parental responsibility and families helped stay together;
- Partnership;
- Prevention;
- Responses should be proportionate to the circumstances;
- Protection; and
- Evidence based and informed decision making.

## 2 OTHER RELATED POLICIES

The school has a duty to ensure that safeguarding permeates all activities and functions. The child protection policy therefore complements and supports a range of other school policies including:

- Anti-Bullying
- Attendance
- Drugs
- Positive Behaviour Management
- Staff Code of Conduct
- Complaints
- Educational Visits
- Online Safety
- First Aid and Administration of Medicines
- Health and Safety
- Intimate Care
- Records Management
- Relationships and Sexuality Education
- Special Educational Needs
- Use of Mobile Phones/Cameras
- Use of Reasonable Force/Safe Handling\*
- Whistleblowing

**These policies are available to parents and any parent wishing to have a copy should contact the School office or visit the school website.**

### CONTACT DETAILS

SCHOOL CONTACT INFORMATION		
<b>Designated Safeguarding Lead:</b>		
Miss Rachael Cunningham	028796 45191	<a href="mailto:rachael.cunningham@uk.oneschoolglobal.com">rachael.cunningham@uk.oneschoolglobal.com</a>
<b>Deputy Designated Safeguarding Lead:</b>		
Mr Kris McClelland	028796 45191	<a href="mailto:kris.mcclelland@uk.oneschoolglobal.com">kris.mcclelland@uk.oneschoolglobal.com</a>
<b>Campus Principal (where the concern is about a member of staff):</b>		
Mr Kris McClelland	028796 45191	<a href="mailto:kris.mcclelland@uk.oneschoolglobal.com">kris.mcclelland@uk.oneschoolglobal.com</a>
<b>Regional Team Leader (where the concern is about the Campus Principal):</b>		

Mr Neville Smerdon		<a href="mailto:neville.smerdon@uk.oneschoolglobal.com">neville.smerdon@uk.oneschoolglobal.com</a>
<b>Safeguarding CA:</b>		
Mr Ewen Cooper	028796 45191	<a href="mailto:ewen.cooper@uk.oneschoolglobal.com">ewen.cooper@uk.oneschoolglobal.com</a>
<b>HR CA:</b>		
Mr Ewen Cooper	028796 45191	<a href="mailto:ewen.cooper@uk.oneschoolglobal.com">ewen.cooper@uk.oneschoolglobal.com</a>
<b>National Safeguarding Coordinator:</b>		
Mrs Kimberley Hutton		<a href="mailto:kimberley.hutton@uk.oneschoolglobal.com">kimberley.hutton@uk.oneschoolglobal.com</a>
<b>EXTERNAL CONTACT INFORMATION</b>		
<b>Children Support Services NI</b>		
CPSS	028 95985590	
Police (non-emergency)	101	
Ofsted Safeguarding Children	08456 404046	<a href="mailto:whistleblowing@ofsted.gov.uk">whistleblowing@ofsted.gov.uk</a>
DfE Dedicated telephone helpline and mailbox for non-emergency advice for Staff & Trustees	020 7340 7264	<a href="mailto:counter.extremism@education.gov.uk">counter.extremism@education.gov.uk</a>
NSPCC Whistleblowing Helpline	0800 028 0285	<a href="mailto:help@nspcc.org.uk">help@nspcc.org.uk</a>
CEOP National Crime Agency	0370 496 7622	<a href="mailto:communication@nca.x.gsi.gov.uk">communication@nca.x.gsi.gov.uk</a>

### 3. ROLES AND RESPONSIBILITIES

#### 3.1 Governance and Proprietors must ensure that:

- A Designated CA for Child Protection is appointed.
- A Designated and Deputy Designated Teacher are appointed in their schools.
- They have a full understanding of the roles of the Designated and Deputy Designated Teachers for Child Protection.
- Safeguarding and child protection training is given to all staff and CAs including refresher training.

- Relevant safeguarding information and guidance is disseminated to all staff and governors with the opportunity to discuss requirements and impact on roles and responsibilities.
- The school has a Child Protection Policy which is reviewed at least annually and parents and pupils receive a copy of the child protection policy and complaints procedure every year.
- The school has an Anti-Bullying Policy which is reviewed at intervals of no more than four years and maintains a record of all incidents of bullying or alleged bullying. See the Addressing Bullying in Schools Act (NI) 2016.
- The school ensures that other safeguarding policies are reviewed at least every 3 years or as specified in relevant guidance.
- There is a code of conduct for all adults working in the school.
- All school staff and volunteers are recruited and vetted, in line with DE Circular 2012/19.
- They receive a full annual report on all child protection matters , as well as half termly reports. This report should include details of the preventative curriculum and any initiatives or awareness raising undertaken within the school, including training for staff.
- The school maintains the following child protection records in line with DE Circulars 2015/13 Dealing with Allegations of Abuse Against a Member of Staff and 2020/07 Child Protection: Record Keeping in Schools: Safeguarding and child protection concerns; disclosures of abuse; allegations against staff and actions taken to investigate and deal with outcomes; staff induction and training.

### **3.2 Governance: Regional Team Leader**

The Regional Team Leader plays a pivotal role in creating and maintaining the safeguarding ethos within the school environment.

In the event of a safeguarding or child protection complaint being made against the Campus Principal, it is the RTL who must assume lead responsibility for managing the complaint/allegation in keeping with guidance issued by the Department, employing authorities, and the school's own policies and procedures.

The RTL is responsible for ensuring child protection records are kept and for signing and dating annually the Record of Child Abuse Complaints against staff members even if there have been no entries.

### 3.3 Designated CA for Child Protection

The Board delegates a specific member of the CA Team to take the lead in safeguarding/child protection issues in order to advise the CA team on: -

- The role of the designated teachers;
- The content of child protection policies;
- The content of a code of conduct for adults within the school;
- The content of the half termly updates and full Annual Designated Teachers Report;
- Recruitment, selection, vetting and induction of staff.

### 3.4 Designated Teacher for Child Protection

Every school is required to have a DT and DDT with responsibility for child protection. These are highly skilled roles developed and supported through a structured training programme, requiring knowledge and professional judgement on complex and emotive issues. The role involves:

- The induction and training of all school staff including support staff.
- Being available to discuss safeguarding or child protection concerns of any member of staff.
- Having responsibility for record keeping of all child protection concerns.
- Maintaining a current awareness of early intervention supports and other local services eg Family Support Hubs.
- Making referrals to Social Services or PSNI where appropriate.
- Liaison with the EA Designated Officers for Child Protection.
- Keeping the school Campus Principal informed.
- Taking the lead responsibility for the development of the school's child protection policy.
- The promotion of a safeguarding and child protection ethos in the school.
- Compiling written reports to the CA team and Board regarding child protection

### See appendix 7 for the Job Description of the Designated Teacher for Child Protection

All Designated teachers, including deputies should sign a copy of the job description

### 3.5 Deputy Designated Teacher for Child Protection

The role of the DDT is to work co-operatively with the DT in fulfilling his/her responsibilities.

It is important that the DDT works in partnership with the DT so that he/she develops sufficient knowledge and experience to undertake the duties of the DT when required. DDTs are also provided with the same specialist training by CPSS to help them in their role.

Schools may have more than one DDT depending on their size, location, (e.g. split site schools) and the presence of an additional provision such as a nursery, learning support centre, speech and language unit, or boarding department.

### 3.6 The Campus Principal

The Campus Principal, as the Secretary to the CA team, will assist the CA team to fulfil its safeguarding and child protection duties, keeping them informed of any changes to guidance, procedure or legislation relating to safeguarding and child protection, ensuring any circulars and guidance from DE are shared promptly, and termly inclusion of child protection activities on the BoG meeting agenda. In addition, the Campus Principal takes the lead in managing child protection concerns relating to staff.

The Campus Principal has delegated responsibility for establishing and managing the safeguarding and child protection systems within the school. This includes the appointment and management of suitable staff to the key roles of DT and DDT Designated Teacher posts and ensuring that new staff and volunteers have safeguarding and child protection awareness sessions as part of an induction programme.

It is essential that there is protected time and support to allow the DTs to carry out this important role effectively and that DTs are selected based on knowledge and skills required to fulfil the role.

The Campus Principal must ensure that parents and pupils receive a copy, or summary, of the Child Protection Policy at intake and, at a minimum, every two years.

### 3.7 Other Members of School Staff

- Members of staff **must** refer concerns or disclosures initially to the Designated Teacher for Child Protection or to the Deputy Designated Teacher if he/she is not available.
- All staff must log any reports of concern on Cpoms if there are safeguarding concerns such as: poor attendance and punctuality, poor presentation, changed or unusual behaviour including self-harm and suicidal thoughts, deterioration in educational progress, discussions with parents about concerns relating to their child, concerns about pupil abuse or serious bullying and concerns about home circumstances including disclosures of domestic abuse.
- **Staff should not** give children a guarantee of total confidentiality regarding their disclosures, should not investigate nor should they ask leading questions

### 3.8 Support Staff

- If any member of the support staff has concerns about a child they should report these concerns to the Designated Teacher or Deputy Designated Teacher if he/she is not available. Concerns about a member of staff should be reported to the Campus Principal.

- A detailed written record of the concerns will be made and any further necessary action will be taken, for staff this will be logged and details on Staff Safe. For a student this will be logged and details on Cpoms.

### 3.9 Parents

**The primary responsibility for safeguarding and protection of children rests with parents who should feel confident about raising any concerns they have in relation to their child.**

- Parents can play their part in safeguarding by informing the school.
- If the child has a medical condition or educational need.
- If there are any Court Orders relating to the safety or wellbeing of a parent or child.
- If there is any change in a child's circumstances for example - change of address, change of contact details, change of name, change of parental responsibility.
- If there are any changes to arrangements about who brings their child to and from school.
- If their child is absent and should send in a note on the child's return to school. This assures the school that the parent/carer knows about the absence. More information on parental responsibility can be found on the EA website at: [www.eani.org.uk/schools/safeguarding-and-child-protection](http://www.eani.org.uk/schools/safeguarding-and-child-protection)

**It is essential that the school has up to date contact details for the parent/carer.**

## 4 CHILD PROTECTION DEFINITIONS

### Definition of Harm

*(Co-operating to Safeguard Children and young People in Northern Ireland August 2017)*

Harm can be suffered by a child or young person by acts of abuse perpetrated upon them by others. Abuse can happen in any family, but children may be more at risk if their parents have problems with drugs, alcohol and mental health, or if they live in a home where domestic abuse happens. Abuse can also occur outside of the family environment. Evidence shows that babies and children with disabilities can be more vulnerable to suffering abuse.

Although the harm from the abuse might take a long time to be recognisable in the child or young person, professionals may be in a position to observe its indicators earlier, for example, in the way that a parent interacts with their child. Effective and ongoing information sharing is key between professionals.

**Harm from abuse is not always straightforward to identify and a child or young person may experience more than one type of harm.**



Harm can be caused by:

**Sexual abuse**  
**Emotional abuse**  
**Physical abuse**  
**Neglect**  
**Exploitation**

**4.1 SEXUAL ABUSE** occurs when others use and exploit children sexually for their own gratification or gain or the gratification of others. Sexual abuse may involve physical contact, including assault by penetration (for example, rape, or oral sex) or non-penetrative acts such as masturbation, kissing, rubbing and touching outside clothing. It may include non-contact activities, such as involving children in the production of sexual images, forcing children to look at sexual images or watch sexual activities, encouraging children to behave in sexually inappropriate ways or grooming a child in preparation for abuse (including via e-technology). Sexual abuse is not solely perpetrated by adult males. Women can commit acts of sexual abuse, as can other children.

**4.2 EMOTIONAL ABUSE** is the persistent emotional maltreatment of a child. It is also sometimes called psychological abuse and it can have severe and persistent adverse effects on a child's emotional development.

Emotional abuse may involve deliberately telling a child that they are worthless, or unloved and inadequate. It may include not giving a child opportunities to express their views, deliberately silencing them, or 'making fun' of what they say or how they communicate. Emotional abuse may involve bullying – including online bullying through social networks, online games or mobile phones – by a child's peers.

**4.3 PHYSICAL ABUSE** is deliberately physically hurting a child. It might take a variety of different forms, including hitting, biting, pinching, shaking, throwing, poisoning, burning or scalding, drowning or suffocating a child.

**4.4 NEGLECT** is the failure to provide for a child's basic needs, whether it be adequate food, clothing, hygiene, supervision or shelter that is likely to result in the serious impairment of a child's health or development. Children who are neglected often also suffer from other types of abuse.

**4.5 EXPLOITATION** is the intentional ill-treatment, manipulation or abuse of power and control over a child or young person; to take selfish or unfair advantage of a child or young person or situation, for personal gain. It may manifest itself in many forms such as child labour, slavery, servitude, and engagement in criminal activity, begging, benefit or other financial fraud or child trafficking. It extends to the recruitment, transportation, transfer, harbouring or receipt of children for the purpose of exploitation. Exploitation can be sexual in nature.

Although ‘exploitation’ is not included in the categories of registration for the Child Protection Register, professionals should recognise that the abuse resulting from or caused by the exploitation of children and young people can be categorised within the existing CPR categories as children who have been exploited will have suffered from physical abuse, neglect, emotional abuse, sexual abuse or a combination of these forms of abuse.

#### **4.6 Specific Types of Abuse**

In addition to the types of abuse described above there are also some specific types of abuse that we at OneSchool Global UK are aware of and have therefore included them in our policy. Please see [Appendix 1](#)

#### **4.7 Children with Increased Vulnerabilities**

Some children have increased risk of abuse due to specific vulnerabilities such as disability, lack of fluency in English or sexual orientation. We have included information about children with increased vulnerabilities in our policy. Please see [Appendix 2](#)

#### **4.8 Signs and Symptoms of Abuse**

The definition of signs and symptoms of abuse from the SBNI Regional Core Policies and Procedures guidance. [See Appendix 3](#)

### **5 RESPONDING TO SAFEGUARDING AND CHILD PROTECTION CONCERNS**

Safeguarding is more than child protection. Safeguarding begins with promotion and preventative activity which enables children and young people to grow up safely and securely in circumstances where their development and wellbeing is not adversely affected. It includes support to families and early intervention to meet the needs of children and continues through to child protection. Child protection refers specifically to the activity that is undertaken to protect individual children or young people who are suffering, or are likely to suffer significant harm<sup>1</sup>.

#### **5.1 How a Parent Can Raise a Concern**

At OneSchool Global UK we aim to work closely with parents/guardians in supporting all aspects of their child’s development and well-being. Any concerns a parent may have will be taken seriously and dealt with in a professional manner.

---

<sup>1</sup> Co-Operating to Safeguard Children and Young People in Northern Ireland (March 2016)  
<https://www.health-ni.gov.uk/publications/co-operating-safeguard-children-and-young-people-northern-ireland>

If a parent has a concern they can talk to the the Designated or Deputy Designated Teacher for child protection or the Principal.

If they are still concerned they may talk to the CA Team or RTL

At any time a parent may talk to a social worker in the local Gateway team or to the PSNI Central Referral Unit. Details of who to contact are shown in the flowchart in [4](#)

## **5.2 Where School Has Concerns or Has Been Given Information about Possible Abuse by Someone Other Than a Member of Staff**

At OneSchool Global UK if a child makes a disclosure to a teacher or other member of staff which gives rise to concerns about possible abuse, or if a member of staff has concerns about a child, the member of staff will complete complete a log of concern on Cpoms and discuss the concern in person with the Designated Safeguarding Teacher or Deputy if the Designated Teacher is not available. **The member of staff will not investigate** - this is a matter for Social Services - but will discuss these concerns with the Designated Teacher or with the Deputy Designated Teacher if he/she is not available.

The Designated Teacher will consult with the Principal or other relevant staff always taking care to avoid due delay. If the Campus Principal is not available, The National Safeguarding Lead can be contacted to discuss and support where needed. If required advice may be sought from the Education Authority Designated Officer for Child Protection. The Designated Teacher may also seek clarification from the child or young person, their parent/carer.

If a child protection referral is not required the school may consider other options including monitoring, signposting or referring to other support agencies e.g. Family Support Hub with parental consent and, where appropriate, with the child/young person's consent.

If a child protection referral is required the Designated Teacher will seek consent from the parent/carer and/or the child {if they are competent to give this} unless this would place the child at risk of significant harm.

The Designated Teacher will phone the Gateway team and/or the PSNI and will submit a completed UNOCINI referral form.

Where appropriate the source of the concern will be informed of the action taken.

For further detail please see Appendix 6

## **5.3 Where a Complaint Has Been Made about Possible Abuse by a Member of the School's Staff or a Volunteer**

When a complaint about possible child abuse is made against a member of staff the Campus Principal must be informed immediately. If the complaint is against the Campus Principal then the Regional Team Leader should be informed and he/she will inform the Chairperson of the

Board of Governors who will consider what action is required in consultation with the employing authority. The procedure as outlined in Appendix 4 will be followed.

## **6 CONSENT**

Prior to making a referral to Social Services the consent of the parent/carers and/or the young person (if they are competent to give this) will normally be sought. The exception to this is where to seek such consent would put that child, young person or others at increased risk of significant harm or an adult at risk of serious harm, or it would undermine the prevention, detection or prosecution of a serious crime including where seeking consent might lead to interference with any potential investigation.

In circumstances where the consent of the parent/carer and/or the young person has been sought and is withheld we will consider and where possible respect their wishes. However our primary consideration must be the safety and welfare of the child and we will make a referral in cases where consent is withheld if we believe on the basis of the information available that it is in the best interests of the child/young person to do so.

### **6.1 Confidentiality and Information Sharing**

Information given to members of staff about possible child abuse cannot be held “in confidence”. In the interests of the child, staff have a responsibility to share relevant information about the protection of children with other professionals particularly the investigative agencies. In keeping with the principle of confidentiality, the sharing of information with school staff will be on a ‘need to know’ basis.

Where there have been, or are current, child protection concerns about a pupil who transfers to another school we will consider what information should be shared with the Designated Teacher in the receiving school.

Where it is necessary to safeguard children information will be shared with other statutory agencies in accordance with the requirements of this policy, the school data protection policy and the General Data Protection Regulations (GDPR)

### **6.2 Record Keeping**

In accordance with DE guidance we must consider and develop clear guidelines for the recording, storage, retention and destruction of both manual and electronic records where they relate to child protection concerns.

In order to meet these requirements all child protection records, information and confidential notes concerning pupils in OneSchool Global UK are stored securely on Cpoms and only the Designated Teacher/Deputy Designated Teacher, Campus Principal and National Safeguarding Lead have access to them. In accordance with DE guidance on the disposal of child protection records these records will be stored from child's date of birth plus 30 years.

If information is held electronically, whether on a PC, a laptop or on a portable memory device, all must be encrypted and appropriately password protected.

These notes or records should be factual, objective and include what was seen, said, heard or reported. They should include details of the place and time and who was present and should be given to the Designated/Deputy Designated Teacher. The person who reports the incident must treat the matter in confidence.

## **7 SAFE RECRUITMENT PROCEDURES**

Vetting checks are a key preventative measure in preventing unsuitable individuals' access to children and vulnerable adults through the education system and schools must ensure that all persons on school property are vetted, inducted and supervised as appropriate. All staff paid or unpaid who are appointed to positions in OneSchool Global UK are vetted/supervised in accordance with relevant legislation and Departmental guidance and the schools Safer Recruitment Policy.

## **8 CODE OF CONDUCT FOR ALL STAFF - PAID OR UNPAID**

All actions concerning children and young people must uphold the best interests of the young person as a primary consideration. Staff must always be mindful of the fact that they hold a position of trust and that their behaviour towards the child and young people in their charge must be above reproach. All members of staff are expected to comply with the school's Code of Conduct for Employees and Volunteers which has been approved by the Board of OneSchool Global UK.

Please refer to the Staff Code of Conduct.

## **9 THE PREVENTATIVE CURRICULUM**

Our school seeks to promote pupils' awareness and understanding of safeguarding issues, including those related to child protection through its curriculum. The safeguarding of children is an important focus in the school's personal development programme and is also addressed where it arises within the context of subjects. Through the preventative curriculum we aim to build the confidence, self-esteem and personal resiliencies of children so that they can develop coping strategies and can make more positive choices in a range of situations. This is included in the PSHE, RSE Curriculum, as well as cross curriculum links. As well as the Theme of the Week

Throughout the school year child protection issues are addressed through class assemblies and there is a permanent child protection notice board in the main corridor and relevant information in each resource area, which provides advice and displays child helpline numbers. Other initiatives which address child protection and safety issues: School visitors e.g. fire fighters, police etc. health visitor parent programmes.

## 10 MONITORING AND EVALUATION

This policy will be reviewed annually by the Safeguarding Team and approved by the Board for dissemination to parents, pupils and staff. It will be implemented through the schools staff induction and training programme and as part of day to day practice. Compliance with the policy will be monitored on an on-going basis by the Designated Teacher for Child Protection and periodically by the Schools Safeguarding Team. The Board will also monitor child protection activity and the implementation of the Safeguarding and Child Protection policy on a regular basis through the provision of reports from the Designated Teacher.

## 5 ATTACHMENTS

Appendix 1	Specific types of abuse
Appendix 2	Children with Increased vulnerabilities
Appendix 3	Signs and Symptoms of Abuse
Appendix 4	What a parent should do if they have a concern
Appendix 5	What to do when a concern is raised by someone who isn't a member of staff
Appendix 6	Allegations of abuse against a member of staff
Appendix 7	Job Description and Person Specification of Designated Teacher
Appendix 8	Safeguarding Contacts Poster
Appendix 9	Safeguarding Display Posters
Appendix 10	Safeguarding Arrangements

## VERSION CONTROL

Policy Code	Date	Version No.	Nature of Change
<b>QSC/65</b>	January 2023	5	Full Re write
<b>QSC/65</b>	September 2023	6.0	Policy Review, updated DSL Job Description
<b>QSC/65</b>	January 2024	6.1	Updated all staff to include permanent or temporary, paid, unpaid, teaching / non-teaching and volunteers. Added updated guidance 2023 Added additional signposting for external resources for Online Safety to Appendix 1 Added signposting to how to request to remove online images of children via NSPCC tool to appendix 1

			Added to appendix 1 on Domestic abuse the update on Domestic and Sexual abuse and the National Strategy in NI Additional guidance for designated safeguarding leads added to appendix 1 on Operation compass
--	--	--	---

## APPENDIX 1                      Specific Types of Abuse

**Grooming** of a child or young person is always abusive and/or exploitative. It often involves perpetrator(s) gaining the trust of the child or young person or, in some cases, the trust of the family, friends or community, and/or making an emotional connection with the victim in order to facilitate abuse before the abuse begins. This may involve providing money, gifts, drugs and/or alcohol or more basic needs such as food, accommodation or clothing to develop the child's/young person's loyalty to and dependence upon the person(s) doing the grooming. The person(s) carrying out the abuse may differ from those involved in grooming which led to it, although this is not always the case. Grooming is often associated with Child Sexual Exploitation (CSE) but can be a precursor to other forms of abuse. Grooming may occur face to face, online and/or through social media, the latter making it more difficult to detect and identify.

Adults may misuse online settings e.g. chat rooms, social and gaming environments and other forms of digital communications, to try and establish contact with children and young people or to share information with other perpetrators, which creates a particular problem because this can occur in real time and there is no permanent record of the interaction or discussion held or information shared. Those working or volunteering with children or young people should be alert to signs that may indicate grooming, and take early action in line with their child protection and safeguarding policies and procedures to enable preventative action to be taken, if possible, before harm occurs. Practitioners should be aware that those involved in grooming may themselves be children or young people, and be acting under the coercion or influence of adults. Such young people must be considered victims of those holding power over them. Careful consideration should always be given to any punitive approach or 'criminalising' young people who may, themselves, still be victims and/or acting under duress, control, threat, the fear of, or actual violence. In consultation with the PSNI and where necessary the PPS, HSC professionals must consider whether children used to groom others should be considered a child in need or requiring protection from significant harm

If the staff at OneSchool Global UK become aware of signs that may indicate grooming they will take early action and follow the school's child protection policies and procedures. The HSCT and PSNI should be involved as early as possible to ensure any evidence that may assist prosecution is not lost and to enable a disruption plan to reduce the victim's contact with the perpetrator(s) and reduce the perpetrator(s) control over the victim to be put in place without delay.

**Child Sexual Exploitation (CSE)** is a form of child sexual abuse. It occurs where an individual or group takes advantage of an imbalance of power to coerce, manipulate or deceive a child or young person under the age of 18 into sexual activity (a) in exchange for something the victim needs or wants, and/ or (b) for the financial advantage or increased status of the perpetrator or facilitator. The victim may have been sexually exploited even if the sexual activity appears consensual. Child sexual exploitation does not always involve physical



contact; it can also occur through the use of technology. (Co-operating to Safeguard Children and Young People in NI. DHSSPS version 2.0 2017).

Any child under the age of eighteen, male or female, can be a victim of CSE. Although younger children can experience CSE, the average age at which concerns are first identified is 12-15 years of age. Sixteen and seventeen year olds, although legally able to consent to sexual activity can also be sexually exploited.

CSE can be perpetrated by adults or by young people's peers, on an individual or group basis, or a combination of both, and can be perpetrated by females as well as males. While children in care are known to experience disproportionate risk of CSE, **the majority of CSE victims are living at home.**

### **Statutory Responsibilities**

CSE is a form of child abuse and, as such, any member of staff suspecting that CSE is occurring will follow the school's child protection policy and procedures, including reporting to the appropriate agencies.

### **Domestic and Sexual Violence and Abuse**

The Stopping Domestic and Sexual Violence and Abuse in Northern Ireland: A Seven Year Strategy (2016) defines domestic and sexual violence and abuse as follows:-

#### **Domestic Violence and Abuse:**

'threatening, controlling, coercive behaviour, violence or abuse (psychological, virtual, physical, verbal, sexual, financial or emotional) inflicted on anyone (irrespective of age, ethnicity, religion, gender, gender identity, sexual orientation or any form of disability) by a current or former intimate partner or family member.'

#### **Sexual Violence and Abuse**

'any behaviour (physical, psychological, verbal, virtual/online) perceived to be of a sexual nature which is controlling, coercive, exploitative, harmful, or unwanted that is inflicted on anyone (irrespective of age, ethnicity, religion, gender, gender identity, sexual orientation or any form of disability).' Please note that coercive, exploitative and harmful behaviour includes taking advantage of an individual's incapacity to give informed consent.

If it comes to the attention of school staff that Domestic Abuse, is or may be, affecting a child this will be passed on to the Designated/Deputy Designated Teacher who has an obligation to share the information with the Social Services Gateway Team.

Addenda have been made to the Year 7 Action Plan to extend this until March 2024. This builds on the progress made against earlier ambitions and targets as well as setting out foundational work for a new Domestic and Sexual Abuse Strategy which will require approval from incoming Ministers and a Northern Ireland Executive. It is important to note that the

current Stopping Domestic and Sexual Violence and Abuse Strategy will remain in place until any new strategy is introduced. The addendum to the Year 7 Action Plan is available at: [Stopping Domestic and Sexual Violence and Abuse in Northern Ireland Strategy | Department of Health \(health-ni.gov.uk\)](#)

## **Operation Encompass**

We are an Operation Encompass school. Operation Encompass is an early intervention partnership between local Police and our school, aimed at supporting children who are victims of domestic violence and abuse. As a school, we recognise that children's exposure to domestic violence is a traumatic event for them.

Children experiencing domestic abuse are negatively impacted by this exposure. Domestic abuse has been identified as an Adverse Childhood Experience and can lead to emotional, physical and psychological harm. Operation Encompass aims to mitigate this harm by enabling the provision of immediate support. This rapid provision of support within the school environment means children are better safeguarded against the short, medium and long-term effects of domestic abuse.

As an Operation Encompass school, when the police have attended a domestic incident and one of our pupils is present, they will make contact with the school at the start of the next working day to share this information with a member of the school safeguarding team. This will allow the school safeguarding team to provide immediate emotional support to this child as well as giving the designated teacher greater insight into any wider safeguarding concerns.

Police will only share enough information to allow the educational setting to provide the necessary pastoral care and support to the child. The type of information that would be received may include the timing of the incident; the child or children involved and where the incident took place if relevant; who was involved in the incident, their relationship to the child and where appropriate, the level of the incident (offence type, injuries etc); and whether the child would have been present, in the vicinity or a witness to the incident. Educational settings should make every effort to ensure that Operation Encompass calls are taken without delay, noting the Police will only share Operation Encompass information with a member of the educational setting safeguarding team.

This information will be treated in strict confidence, like any other category of child protection information. It will be processed as per DE Circular 2020/07 'Child Protection Record Keeping in Schools' and a note will be made in the child's child protection file. The information received on an Operation Encompass call from the Police will only be shared outside of the safeguarding team on a proportionate and need to know basis. All members of the safeguarding team will complete online Operation Encompass training, so they are able to take these calls. Any staff responsible for answering the phone at school will be made aware of Operation Encompass and the need to pass these calls on with urgency to a member of the Safeguarding team.

Designated teachers will have to make their own professional judgement on how best to respond to the information they receive. This will depend on:

The severity of the incident.

The type of information shared by the Police.

The age and stage of development of the child.

Any previous history known to the designated teacher.

Following any Operation Encompass call, designated teachers must make a record in the appropriate child protection file in line with the existing guidance on Child Protection Record Keeping in Schools, DE Circular 2020/07. This record should include synopsis of the information shared and any actions taken. The Regulations do permit the designated teacher to share relevant information with the class teacher, with the aim of supporting the child in school. If the designated teacher decides this is necessary, then they should make a record of their decision and who they have told in the child protection file. Any class teacher who is given information originating in an Operation Encompass call must be reminded of their responsibility for absolute confidentiality.

It is not the school's responsibility to refer Operation Encompass information onto social services. This will be automatically done by the PSNI. In many cases, this will lead to ongoing social work intervention with the family. However, staff should be aware that lower level cases may not be accepted by social services for assessment and so you should not always assume that social services will be involved. On some occasions, children may disclose additional information to school staff and designated teachers may be unsure if this information is known to social services. If this happens, please contact CPSS for advice.

Further information about The Domestic Abuse Information Sharing with Schools etc. Regulations (Northern Ireland) 2022 can be found by following the link to: <https://www.legislation.gov.uk>

**Female Genital Mutilation (FGM)** is a form of child abuse and violence against women and girls. FGM comprises all procedures that involve partial or total removal of the external female genitalia, or other injury to the female genital organs for non-medical reasons. The procedure is also referred to as 'cutting', 'female circumcision' and 'initiation'. The practice is medically unnecessary, extremely painful and has serious health consequences, both at the time when the mutilation is carried out and in later life. FGM is a form of child abuse and, as such, teachers have a statutory duty to report cases, including suspicion, to the appropriate agencies, through agreed established procedures set out in our school policy. Where there is a concern that a child or young person may be at immediate risk of FGM this should be reported to the PSNI without delay. Contact can be made directly to the Sexual Referral Unit (based within the Public Protection Unit) at 028 9025 9299. Where there is a concern that a child or young person may be at risk of FGM, referral should be made to the relevant HSCT Gateway Team.

**Forced Marriage** A forced marriage is a marriage conducted without the valid consent of one or both parties and where duress is a factor. Duress can include physical, psychological, financial, sexual and emotional pressure. Forced marriage is a criminal offence in Northern Ireland and if at OneSchool Global UK we have knowledge or suspicion of a forced marriage in relation to a child or young person we will contact the PSNI immediately.

### **Children Who Display Harmful Sexual Behaviour**

Learning about sex and sexual behaviour is a normal part of a child's development. It will help them as they grow up, and as they start to make decisions about relationships. As a school we support children and young people, through the Personal Development element of the curriculum, to develop their understanding of relationships and sexuality and the responsibilities of healthy relationships. Teachers are often therefore in a good position to consider if behaviour is within the normal continuum or otherwise.

It must also be borne in mind that sexually harmful behaviour is primarily a child protection concern. There may remain issues to be addressed through the school's positive behaviour policy but it is important to always apply principles that remain child centred.

It is important to distinguish between different sexual behaviours - these can be defined as normal, inappropriate, problematic, abusive or violent. Normal sexual behaviour will normally have no need for intervention, however consideration may be required as to appropriateness within a school setting. Inappropriate sexual behaviour requires some level of intervention, depending on the activity and level of concern. For example, a one-off incident may simply require liaising with parents on setting clear direction that the behaviour is unacceptable, explaining boundaries and providing information and education. Alternatively, if the behaviour is considered to be more serious, perhaps because there are a number of aspects of concern, advice from the EA CPSS may be required. The CPSS will advise if additional advice from PSNI or Social Services is required. We will also take guidance from DE Circular 2022/02 to address concerns about harmful sexualised behaviour displayed by children and young people.

**Abusive Sexual Behaviours** are of significant concern and guidance on the management of the pupils and referrals to other agencies such as Social Services or the Police should be sought from CPSS.

Some examples of abusive sexual behaviours are victimising intent or outcome, the misuse of power, coercion and force to ensure victim compliance, they may be intrusive and may include elements of expressive violence, informed consent is lacking or is not given by the victim, for example because of their special needs or they may have been under the influence of alcohol or other substances

**Violent Sexual Behaviours** are also of significant concern. They may have features of threat, force, coercion or harm to others.

Some examples of violent sexual behaviour include physically violent sexual abuse which is highly intrusive, instrumental violence which is physiologically and or sexually arousing to the perpetrator and may involve sadism.

Advice from CPSS will be required if we are aware of a young person displaying violent sexual behaviour.

## **E Safety/Internet Abuse**

Online safety means acting and staying safe when using digital technologies. It is wider than simply internet technology and includes electronic communication via text messages, social environments and apps, and using games consoles through any digital device. In all cases, in schools and elsewhere, it is a paramount concern.

In January 2014, the SBNI published its report 'An exploration of e-safety messages to young people, parents and practitioners in Northern Ireland' which identified the associated risks around online safety under four categories:

- **Content Risks:** the child or young person is exposed to harmful material.
- **Contact risks:** the child or young person participates in adult initiated online activity.
- **Conduct Risks:** the child or young person is a perpetrator or victim in peer-to-peer exchange.
- **Commercial Risks:** the child or young person is exposed to inappropriate commercial advertising, marketing schemes or hidden costs.

We at OneSchool Global UK have a responsibility to ensure that there is a reduced risk of pupils accessing harmful and inappropriate digital content and will be energetic in teaching pupils how to act responsibly and keep themselves safe. As a result, pupils should have a clear understanding of online safety issues and, individually, be able to demonstrate what a positive digital footprint might look like.

The school's actions and governance of online safety are reflected clearly in our safeguarding arrangements. Safeguarding and promoting pupils' welfare around digital technology is the responsibility of everyone who comes into contact with the pupils in the school or on school-organised activities.

Signposting to services which can be accessed

[Online Safety Strategy and Action Plan | Department of Health \(health-ni.gov.uk\)](#)

[Contact the Hub - Safeguarding Board for Northern Ireland \(safeguardingni.org\)](#)

**Sexting** is the sending or posting of sexually suggestive images, including nude or semi-nude photographs, via mobile or over the internet. There are two aspects to Sexting:

### **1/Sexting between Individuals in a Relationship**

Pupils need to be aware that it is illegal, under the Sexual Offences (NI) Order 2008, to take, possess or share 'indecent images' of anyone under 18 even if they are the person in the picture (or even if they are aged 16+ and in a consensual relationship) and in these cases we will contact local police on 101 for advice and guidance. We may also seek advice from the EA Child Protection Support Service

Please be aware that, while offences may technically have been committed by the child/children involved, the matter will be dealt with sensitively and considering all of the circumstances and it is not necessarily the case that they will end up with a criminal record. It is important that particular care is taken in dealing with any such cases. Adopting scare tactics may discourage a young person from seeking help if they feel entrapped by the misuse of a sexual image.

## **2/Sharing an Inappropriate Image with an Intent to Cause Distress**

If a pupil has been affected by inappropriate images or links on the internet it is important that it is **not forwarded to anyone else**. Schools are not required to investigate incidents. It is an offence under the Criminal Justice and Courts Act 2015 to share an inappropriate image of another person without the individuals consent. For further information see: [www.legislation.gov.uk/ukpga/2015/2/section/33/enacted](http://www.legislation.gov.uk/ukpga/2015/2/section/33/enacted)

If a young person has shared an inappropriate image of themselves that is now being shared further whether or not it is intended to cause distress, the child protection procedures of the school will be followed.

Childline's Report Remove Tool may be able to assist in having an image blocked or removed to prevent further distribution.

[Report Remove | Childline](#)

### **The main forms of abuse are:**

#### **Physical abuse**

Physical abuse is the use of physical force or mistreatment of one person by another which may or may not result in actual physical injury. This may include hitting, pushing, rough handling, exposure to heat or cold, force feeding, improper administration of medication, denial of treatment, misuse or illegal use of restraint and deprivation of liberty.

#### **Sexual Violence and Abuse**

Sexual abuse is any behaviour perceived to be of a sexual nature which is unwanted or takes place without consent or understanding<sup>6</sup>. Sexual violence and abuse can take many forms and may include non-contact sexual activities, such as indecent exposure, stalking, grooming, being made to look at or be involved in the production of sexually abusive material, or being

made to watch sexual activities. It may involve physical contact, including but not limited to non-consensual penetrative sexual activities or non-penetrative sexual activities, such as intentional touching (known as groping). Sexual violence can be found across all sections of society, irrelevant of gender, age, ability, religion, race, ethnicity, personal circumstances, financial background or sexual orientation.

### **Psychological/Emotional Abuse**

Psychological/emotional abuse is behaviour that is psychologically harmful or inflicts mental distress by threat, humiliation or other verbal/non-verbal conduct. This may include threats, humiliation or ridicule, provoking fear of violence, shouting, yelling and swearing, blaming, Controlling, Intimidation and Coercion.

### **Financial Abuse**

Financial abuse is actual or attempted theft, fraud or burglary. It is the misappropriation or misuse of money, property, benefits, material goods or other asset transactions which the person did not or could not consent to, or which were invalidated by intimidation, coercion or deception. This may include exploitation, embezzlement, withholding pension or benefits or pressure exerted around wills, property or inheritance.

### **Institutional Abuse**

Institutional abuse is the mistreatment or neglect of an adult by a regime or individuals in settings which adults who may be at risk reside in or use. This can occur in any organisation, within and outside the HSC sector. Institutional abuse may occur when the routines, systems and regimes result in poor standards of care, poor practice and behaviours, inflexible regimes and rigid routines which violate the dignity and human rights of the adults and place them at risk of harm. Institutional abuse may occur within a culture that denies, restricts or curtails privacy, dignity, choice and independence. It involves the collective failure of a service provider or an organisation to provide safe and appropriate services, and includes a failure to ensure that the necessary preventative and/or protective measures are in place.

**Neglect** occurs when a person deliberately withholds, or fails to provide, appropriate and adequate care and support which is required by another adult. It may be through a lack of knowledge or awareness, or through a failure to take reasonable action given the information and facts available to them at the time. It may include physical neglect to the extent that health or well-being is impaired, administering too much or too little medication, failure to provide access to appropriate health or social care, withholding the necessities of life, such as adequate nutrition, heating or clothing, or failure to intervene in situations that are dangerous to the person concerned or to others particularly when the person lacks the capacity to assess risk.

## Appendix 2

### Children with Increased Vulnerabilities

- **Children With a Disability**

Children and young people with disabilities (i.e. any child or young person who has a physical, sensory or learning impairment or a significant health condition) may be more vulnerable to abuse and those working with children with disabilities should be aware of any vulnerability factors associated with risk of harm, and any emerging child protection issues.

Staff must be aware that communication difficulties can be hidden or overlooked making disclosure particularly difficult. Staff and volunteers working with children with disabilities will receive training to enable them to identify and refer concerns early in order to allow preventative action to be taken.

- **Children With Limited Fluency in English**

Children whose first language is not English/Newcomer pupils should be given the opportunity to express themselves to a member of staff or other professional with appropriate language/communication skills, especially where there are concerns that abuse may have occurred. DTs and other relevant school staff should seek advice and support from the EA's Intercultural Education Service if necessary. All schools should create an atmosphere in which pupils with special educational needs which involve communication difficulties, or pupils for whom English is not their first language, feel confident to discuss these issues or other matters that may be worrying them.

- **Gender Identity Issues and Sexual Orientation**

Schools should strive to provide a happy environment where all young people feel safe and secure. All pupils have the right to learn in a safe and secure environment, to be treated with respect and dignity, and not to be treated any less favourably due to their actual or perceived sexual orientation.

- **Work Experience, School Trips and Educational Visits**

Our duty to safeguard and promote the welfare of children and young people also includes periods when they are in our care outside of the school setting. We will follow DE and EA guidance on educational visits, school trips and work experience to ensure our current safeguarding policies are adhered to and that appropriate staffing levels are in place.



## APPENDIX 3      Signs and Symptoms of Child Abuse

This section contains information for all professionals working with children and families and is not an exhaustive list. The following pages provide guidance only and should not be used as a checklist.

### 2.1      **The first indication that a child is being abused may not necessarily be the presence of a severe injury. Concerns may become apparent in a number of ways e.g.**

- by bruises or marks on a child's body
- by remarks made by a child, his parents or friends
- by overhearing conversation by the child, or his parents
- by observing that the child is either being made a scapegoat by or has a poor relationship/bond with his parents.
  
- by a child having sexual knowledge or exhibiting sexualised behaviour which is unusual given his age and/or level of understanding.
  
- by a child not thriving or developing at a rate which one would expect for his age and stage of development.
  
- by the observation of a child's behaviour and changes in his behaviour.
  
- by indications that the family is under stress and needs support in caring for their children.
  
- by repeat visits to a general practitioner or hospital.

2.2      There may be a series of events which in themselves do not necessarily cause concern but are significant, if viewed together. Initially the incident may not seem serious but it should be remembered that prompt help to a family under stress may prevent minor abuse escalating into something more serious.

2.3      It is important to remember that abused children do not necessarily show fear or anxiety and may appear to have established a sound relationship with their abuser(s). Staff should familiarise themselves on 'attachment theory' and its implications for assessing the bond between parents and their children.

2.4      Suspicions should be raised by e.g.

- discrepancy between an injury and the explanation
- conflicting explanation, or no explanation, for an injury
- delay in seeking treatment for any health problem
- injuries of different ages

- history of previous concerns or injuries
- faltering growth (failure to thrive)
- parents show little, or no, concern about the child's condition or show little warmth or empathy with the child
- evidence of domestic violence
- parents with mental health difficulties, particularly of a psychotic nature
- evidence of parental substance abuse

2.5 Signs and symptoms are indicators and simply highlight the need for further investigation and assessment.

### **Parental Response to Allegations of Child Abuse Which Raise Concern**

2.6 **Parents' responses to allegations of abuse of their child are very varied. The following types of response are of concern:**

- there may be an unequivocal denial of abuse and possible non-compliance with enquiries.
- parents may over-react, either aggressively or defensively, to a suggestion that they may be responsible for harm to their child.
- there may be reluctance to give information, or the explanation given may be incompatible with the harm caused to the child, or explanations may change over time.
- parents may display a lack of awareness that the child has suffered harm, or that their actions, or the actions of others, may have caused harm.
- parents may seek to minimise the severity of the abuse, or not accept that their actions constitute abuse.
- parents may fail to engage with professionals.
- blame or responsibility for the harm may be inappropriately placed on the child or an unnamed third party.
- parents may seek help on matters unrelated to the abuse or its causes (this may be to deflect attention away from the child and his injuries).
- the parents and/or child may go missing.

## Physical Abuse

- 2.7 Children receive bumps and bruises as a result of the rough and tumble of normal play. Most children will have bruises or other injuries, therefore, from time to time. These will be accidental and can be easily explained.
- 2.8 It is not necessary to establish intent to cause harm to the child to conclude that the child has been subject to abuse. Physical abuse can occur through acts of both commission and/or omission.
- 2.9 Insignificant but repeated injuries, however minor, may be symptomatic of a family in crisis and, if no action is taken, the child may be further injured. All injuries should be noted and collated in the child's records and analysed to assess if the child requires to be safeguarded.
- 2.10 If on initial examination the injury is not felt to be compatible with the explanation given or suggest abuse it should be discussed with a senior paediatrician.
- 2.11 A small number of children suffer from rare conditions, e.g. haemophilia or brittle bone disease, which makes them susceptible to bruising and fractures. It is important to remain aware, however, that in such children some injuries may have a non-accidental cause. A "clotting screen" only excludes the common conditions which may cause spontaneous bleeding. If the history suggests a bleeding disorder, referral to a haematologist will be required.

## Recognition of Physical Abuse

### a) Bruises + Soft Tissue Injuries

- 2.12 Common sites for accidental bruising depend on the developmental stage of the child. They include:
- forehead
  - crown of head
  - bony spinal protuberances
  - elbows and below
  - hips
  - hands
  - shins
- 2.13 Less common sites for accidental bruising include:
- Eyes
  - Ears

- Cheeks
- Mouth
- Neck
- Shoulders
- Chest
- Upper and Inner Arms
- Stomach
- Genitals
- Upper and Inner Thighs
- Lower Back and Buttocks
- Upper Lip and Frenulum
- Back of the Hands.

#### 2.14 **Non-accidental bruises may be:**

- frequent
- patterned, e.g. finger and thumb marks
- in unusual positions, (note developmental level and activity of the child).

Research on aging of bruises (from photographs) has shown that it is impossible to accurately age bruises although it can be concluded that a bruise with a yellow colour is more than 18 hours old. Tender or swollen bruises are more likely to be fresh. It is not possible to conclude definitely that bruises of different colours were sustained at different times.

#### **The following should give rise to concern e.g.**

- bruising in a non-mobile child, in the absence of an adequate explanation,
- bruises other than at the common sites of accidental injury for a child of that developmental stage,
- facial bruising, particularly around the eyes, cheeks, mouth or ears, especially in very young children.
- soft tissue bruising, on e.g. cheeks, arms and inner surface of thighs, with no adequate explanation.
- a torn upper lip frenulum (skin which joins the lip and gum).
- patterned bruising e.g. linear or outline bruising, hand marks (due to grab, slap or pinch may be petechial), strap marks particularly on the buttocks or back.

- ligature marks caused by tying up or strangulation.

2.15 Most falls or accidents produce one bruise on a single surface, usually a bony protuberance. A child who falls downstairs would generally only have one or two bruises. Children usually fall forwards and therefore bruising is most usually found on the front of the body. In addition, there may be marks on their hands if they have tried to break their fall.

2.16 Bruising may be difficult to see on a dark skinned child. Mongolian blue spots are natural pigmentation to the skin, which may be mistaken for bruising. These purplish-blue skin markings are most commonly found on the backs of children whose parents are darker skinned.

#### **b) Eye Injuries**

2.17 **Injuries which should give cause for concern:**

- black eyes can occur from any direct injury, both accidental and non-accidental. Determining how the injury occurred is vital, therefore; bilateral "black eyes" can occur accidentally as a result of blood tracking from a very hard blow to the central forehead (Injury should be evident on mid-forehead, bridge of nose). It is rare for both eyes to be bruised separately, accidentally however and at the same time.
- sub conjunctival haemorrhage
- retinal haemorrhage.

#### **c) Burns and Scalds**

2.18 **Accidental scalds often:**

- are on the upper part of the body
- are on a convex (curved) surface
- are irregular
- are superficial
- leave a recognisable pattern.

2.19 **It can be difficult to distinguish between accidental and non-accidental burns. Any burn or scald with a clear outline should be regarded with suspicion e.g.**

- circular burns
- linear burns
- burns of uniform depth over a large area
- friction burns
- scalds that have a line which could indicate immersion or poured liquid
- splash marks

- old scars indicating previous burns or scalds.

2.20 **When a child presents with a burn or scald it is important to remember:**

- a responsible adult checks the temperature of the bath before a child gets in to it.
- a child is unlikely to sit down voluntarily in too hot water and cannot accidentally scald his bottom without also scalding his feet.
- "doughnut" shaped burns to the buttocks often indicate that a child has been held down in hot water, with the buttocks held against the water container e.g. bath, sink etc.
- a child getting into too hot water of its own accord will struggle to get out and there are likely to be splash marks.
- small round burns may be cigarette burns, but can often be confused with skin conditions. Where there is doubt, a medical/dermatology opinion should be sought.

**d) Fractures**

2.21 The potential for a fracture should be considered if there is pain, swelling and discoloration over a bone or joint or a child is not using a limb, especially in younger children. The majority of fractures normally cause pain and it is very difficult for a parent to be unaware that a child has been hurt. In infants, rib and metaphysical limb fractures may produce no detectable ongoing pain however.

2.22 It is very rare for a child aged under one year to sustain a fracture accidentally, but there may be some underlying medical condition, e.g. brittle bone disease, which can cause fractures in babies.

2.23 The most common non-accidental fractures are to the long bones in the arms and legs and to the ribs. The following should give cause for concern and further investigation may be necessary:

- any fracture in a child under one year of age
- any skull fracture in children under three years of age
- a history of previous skeletal injuries which may suggest abuse
- skeletal injuries at different stages of healing
- evidence of previous fractures which were left untreated.

**e) Scars**

2.24 Children may have scars from previous injuries. Particular note should be taken if there is a large number of scars of different ages, or of unusual shapes or large scars from burns or lacerations that have not received medical treatment.

**f) Bites**

2.25 Bites are always non-accidental in origin; they can be caused by animals or human beings (adult/child); a dental surgeon with forensic experience may be needed to secure detailed evidence in such cases.

**g) Other Types of Physical Injuries**

- 2.26
- poisoning, either through acts of omission or commission
  - ingestion of other damaging substances, e.g. bleach
  - administration of drugs to children where they are not medically indicated or prescribed
  - female genital mutilation, which is an offence, regardless of cultural reasons
  - unexplained neurological signs and symptoms, e.g. subdural haematoma

**1. h) Fabricated or Induced Illness**

2.27 Fabricated or induced illness, previously known as Munchausen's Syndrome by Proxy, is a condition where a child suffers harm through the deliberate action of the main carer, in most cases the mother, but which is attributed to another medical cause.

2.28 It is important not to confuse this deliberate activity with the behaviour and actions of over-anxious parents who constantly seek advice from doctors, health visitors and other health professionals about their child's wellbeing.

2.29 There is a need to exercise caution about attributing a child's illness, in the absence of a medical diagnosis, to deliberate activity on the part of a parent or carer to a fabricated or induced illness, as stated in the Court of Appeal judgement in the case of Angela Cannings.

(R v Cannings (2004) EWCA Crim1 (19 January 2004)).

2.30 **The following behaviours exhibited by parents can be associated with fabricated or induced illness:**

- deliberately inducing symptoms in children by administering medication or other substances, or by means of intentional suffocation.

- interfering with treatments by over-dosing, not administering them or interfering with medical equipment such as infusion lines or not complying with professional advice, resulting in significant harm.
- claiming the child has symptoms which may be unverifiable unless observed directly, such as pain, frequency of passing urine, vomiting or fits.
- exaggerating symptoms, causing professionals to undertake investigations and treatments which may be invasive, unnecessary and, therefore, are harmful and possibly dangerous.
- obtaining specialist treatments or equipment for children who do not require them.
- alleging psychological illness in a child.

2.31 **There are a number of presentations in which fabricated or induced illness may be a possibility. These are:**

- failure to thrive/growth faltering (sometimes through deliberate withholding of food.)
- fabrication of medical symptoms especially where there is no independent witness
- convulsions.
- pyrexia (high temperature).
- cyanotic episode (reported blue tinge to the skin due to lack of oxygen).
- apnoea (stops breathing).
- allergies
- asthmatic attacks
- unexplained bleeding (especially anal or genital or bleeding from the ears)
- frequent unsubstantiated allegations of sexual abuse, especially when accompanied by demands for medical examinations
- frequent 'accidental' overdoses (especially in very young children).

2.32 **Concerns may arise when:**

- reported symptoms and signs found on examinations are not (3 explained by any medical condition from which the child may be suffering).
- physical examination and results of medical investigations do not explain reported symptoms and signs.
- there is an inexplicably poor response to prescribed medication and other treatment.
- new symptoms are reported on resolution of previous ones.
- reported symptoms and/or clinical signs do not occur when the carers are absent
- over time the child is repeatedly presented to health professionals with a range of signs and symptoms.



- the child's normal, daily life activities are being curtailed beyond that which might be expected for any medical disorder or disability from which the child is known to suffer.

2.33 *It is important to note that the child may also have an illness that has been diagnosed and needs regular treatment. This may make the diagnosis of fabricated or induced illness difficult, as the presenting symptoms may be similar to those of the diagnosed illness.*

### **Sexual Abuse**

2.34 Most child victims are sexually abused by someone they know, either a family member or someone well known to them or their family. In recent years there has been an increasing recognition that both male and female children and older children are sexually abused to a greater extent than had previously been realised.

2.35 There are no 'typical' sexually abusing families. Children who have been sexually abused are likely to have been put under considerable pressure not to reveal what has been happening to them. Sexual abuse is damaging to children, both in the short and long term.

2.36 Both boys and girls of all ages are abused and the abuse may continue for many years before it is disclosed. Abusers may be both male and female.

2.37 It is important to note that children and young people may also abuse other children sexually.

2.38 Children disclosing sexual abuse have the right to be listened to and to have their allegations taken seriously. Research shows it is rare for children to invent allegations of sexual abuse and that in fact they are more likely to claim they are not being abused when they are.

2.39 It is important that the indicators listed below are assessed in terms of significance and in the context of the child's life, before concluding that the child is, or has been, sexually abused.

Some indicators take on a greater, or lesser, importance depending upon the child's age.

### **Recognition of Sexual Abuse**

2.40 Sexual abuse often presents in an obscure way. Whilst some child victims have obvious genital injuries, a sexually transmitted infection or are pregnant, relatively few children

are so easily diagnosed. The majority of children subjected to sexual abuse, even when penetration has occurred, have on medical examination no evidence of the abuse having occurred.

- 2.41 The following indicators of sexual abuse may be observed in a child. There may be occasions when no symptoms are present but it is still thought that a child may be, or has been, sexually abused. Suspicions increase where several features are present together. **The following list is not exhaustive and should not be used as a check list.**

### Primary School Age Children

- 2.44 **In addition to the above there may be other behaviour especially noticeable in school:**

- poor peer group relationships and inability to make friends.
- inability to concentrate, learning difficulties or a sudden drop in school performance.
- reluctance to participate in physical activity or to change clothes for physical education, games or swimming.
- unusual or bizarre sexual themes in child's art work or stories.
- frequent absences from school that are justified by one parent only, apparently without regard for its implications for the child's school performance.
- unusual reluctance or fear of going home after school.

### The Adolescent

- 2.45 **In addition to the physical indicators previously outlined in the preschool and pre-adolescent child, the following indicators relate specifically to the adolescent:**

- recurrent urinary tract infections.
- pregnancy, especially where the information about or the identity of the father is vague or secret or where there is complete denial of the pregnancy by the girl and her family.

- sexually transmitted infections.

#### 2.46 **Possible behavioural indicators include:**

- repeated running away from home
- sleep problems - insomnia, recurrent nightmares, fear of going to bed or overdressing for bed
- dependence on alcohol or drug
- suicide attempts and self-mutilation
- hysterical behaviour, depression, withdrawal, mood swings;
- vulnerability to sexual and emotional exploitation, fear of intimate relationships, promiscuity
- eating disorders — e.g. anorexia nervosa and bulimia
- low self-esteem and low expectation of others
- persistent stealing and /or lying
- sudden school problems - taunting, lack of concentration, falling standard or work etc.
- fear or abhorrence of one particular individual.

#### **Emotional Abuse**

- 2.47 Emotional abuse is as damaging as other, visible, forms of abuse in terms of its impact on the child. There is increasing evidence of the adverse long-term consequences for children's development where they have been subject to emotional abuse. Emotional abuse has an impact on a child's physical health, mental health, behaviour and self-esteem. It can be particularly damaging for children aged 0 to 3 years.
- 2.48 Emotional abuse may take the form of under-protection, and/or over-protection, of the child, which has a significant negative impact on a child's development.
- 2.49 The parents' physical care of the child, and his environment, may appear to meet the child's needs, but it is important to remain aware of the interactions and relationship which occur between the child and his parents to determine if they are nurturing and appropriate.
- 2.50 An emotionally abused child may be subject to constant criticism and being made a scapegoat, the continuous withholding of approval and affection, severe discipline or a total lack of appropriate boundaries and control. A child may be used to fulfil a parent's emotional needs.
- 2.51 The potential of emotional abuse should always be considered in referrals where instances of domestic violence have been reported.

### **Recognition of Emotional Abuse**

2.52 Whilst emotional abuse can occur in the absence of other types of abuse, it is important to recognise that it does often co-exist with them, to a greater or lesser extent.

### **Child Behaviours associated with Emotional Abuse**

2.53 Some of the symptoms and signs seen in children who are emotionally abused are presented below. It is the degree and persistence of such symptoms that should result in the consideration of emotional abuse as a possibility. Importantly, it should be remembered that whilst these symptoms may suggest emotional abuse they are not necessarily pathognomic of this since they often can be seen in other conditions.

2.54 **Possible behaviours that may indicate emotional abuse include:**

- serious emotional reactions, characterised by withdrawal, anxiety, social and home fears etc.
- marked behavioural and conduct difficulties, e.g. opposition and aggression, stealing, running away, promiscuity, lying.
- persistent relationship difficulties, e.g. extreme clinginess, intense separation reaction.
- physical problems such as repeated illnesses, severe eating problems, severe toileting problem.
- extremes of self-stimulatory behaviours, e.g. head banging, comfort seeking, masturbation etc.
- very low self-esteem, often unable to accept praise or to trust and lack of self-pride.
- lack of any sense of pleasure in achievement, over-serious or apathetic.
- over anxiety, e.g. constantly checking or over anxious to please.
- developmental delay in young children, and failure to reach potential in learning.

### **Parental Behaviour Associated with Emotional Abuse**

2.55 **Behaviour shown by parents which, if persistent, may indicate emotionally abusive behaviour includes:**

- extreme emotions and behaviours towards their child including criticism, negativity, rejecting attitudes, hostility etc.
- fostering extreme dependency in the child

- harsh disciplining, inconsistent disciplining and the use of emotional sanctions such as withdrawal of love
- expectations and demands which are not appropriate for the developmental stage of the child, e.g. too high or too low
- exposure of the child to family violence and abuse
- inconsistent and unpredictable responses to the child
- contradictory, confusing or misleading messages in communicating with the child
- serious physical or psychiatric illness of a parent where the emotional needs of the child are not capable of being considered and/or appropriately met
- induction of the child into bizarre parental belief systems
- break-down in parental relationship with chronic, bitter conflict over contact or residence arrangements for the child
- major and repeated familial change, e.g. separations and reconstitution of families and/or changes of address
- making a child a scapegoat within the family

### **Neglect**

2.56 Neglect and failure to thrive/growth faltering for non-organic reasons requires medical diagnosis. Non-organic failure to thrive is where there is a poor growth for which no medical cause is found, especially when there is a dramatic improvement in growth on a nutritional diet away from the parent's care. Failure to thrive tends to be associated with young children but neglect can also cause difficulties for older children.

2.57 There is a tendency to associate neglect with poverty and social disadvantage. Persistent neglect over long periods of time is likely to have causes other than poverty, however. There has to be a distinction made between financial poverty and emotional poverty.

2.58 **There are a number of types of neglect that can occur separately or together, for example:**

- medical neglect
- educational neglect
- simulative neglect environmental neglect
- environmental neglect
- failure to provide adequate supervision and a safe environment.

### **Recognition of Neglect**

2.59 Neglect is a chronic, persistent problem. The concerns about the parents not providing "good enough" care for their child will develop over time. It is the accumulation of such concerns which will trigger the need to invoke the Child Protection Process. In cases of neglect it is important that details about the standard of care of the child are recorded and there is regular inter-agency sharing of this information.

2.60 It is important to remember that the degree of neglect can fluctuate, sometimes rapidly, therefore ongoing inter-agency assessment and monitoring is essential.

2.61 The assessment of neglect should take account of the child's age and stage of development, whether the neglect is severe in nature and whether it is resulting in, or likely to result in, significant impairment to the child's health and development.

2.62 The following areas should be considered when assessing whether the quality of care a child receives constitutes neglect.

### **Child**

2.63 **Health presentation indicators include:**

- non-organic failure to thrive (growth faltering)
- poor weight gain (improvement when away from the care of the parents)
- poor height gain
- unmet medical needs
- untreated head lice/other infestations
- frequent attendance at 'accident and emergency' and/or frequent hospital admissions
- tired or depressed child, including a child who is anaemic or has rickets
- poor hygiene
- poor or inappropriate clothing for the time of year
- abnormal eating behaviour (bingeing or hoarding).

2.64 **Emotional and behavioural development indicators include:**

- developmental delay/special needs
- presents as being under-stimulated
- abnormal reaction to separation/ or attachment, disorder
- over-active and/or aggressive
- soiling and/or wetting
- repeated running away from home
- substance misuse
- offending behaviour, including stealing food
- teenage pregnancy.

2.65 **Family and social relationship indicators include**

- high criticism/low warmth
- excluded by family
- sibling violence
- isolated child

- attachment disorders and /or seeking comfort from strangers
- left unattended/or to care for other children
- left to wander alone day or night
- constantly late to school/late being collected
- not wanting to go home from school or refusing to go to school
- poor attendance at school/nursery
- frequent name changes and/or change of address or parental figures within the home.
- management of a child with a disability who is not attaining the level of functioning which is commensurate with the disability.

Consideration should be given as to whether a child and adolescent mental health assessment is required. Have all children in the family been seen and their views explored and documented?

### Parents

- 2.66 **Lack of emotional warmth indicators include:**
- unrealistic expectations of child
  - inability to consider or put child's needs first
  - name calling/degrading remarks
  - lack of appropriate affection for the child
  - violence within the home from which the child is not shielded
  - partner resenting non-biological child and hostile in attitude towards him
  - failure to provide basic care for the child.
- 2.67 **Lack of stability indicators include:**
- frequent changes of partners
  - poor family support/inappropriate support
  - lack of consistent relationships
  - frequent moves of home
  - enforced unemployment
  - drug, alcohol or substance dependency
  - financial pressures/debt
  - absence of local support networks, neighbours etc.
- 2.68 **Issues relating to providing guidance and setting boundaries indicators include:**
- poor boundary setting
  - inconsistent attitudes and reactions, especially to child's behaviour
  - continuously failing appointments
  - refusing offers of help and services
  - failure to seek or use advice and/or help offered appropriately

- seeks to mislead professionals by providing inaccurate or confusing information
- failure to provide safe environment.

#### 2.69 **Social Presentation**

- aggressive/threatening behaviour towards professionals and volunteers
- disguised compliance
- IOW self-esteem
- lack of self-care.

#### 2.70 **Health**

- mental ill health
- substance misuse
- learning difficulties
- (post-natal) depression
- history of parental child abuse or poor parenting
- physical health.

#### **Home and Environmental Conditions**

2.71 The following home and environmental conditions should be considered:

- poor housing conditions
- overcrowding
- lack of water, heating, sanitation
- no access to washing machine
- piles of dirty washing
- little or no adequate clean bedding/furniture
- little or no food in cupboards
- human and/or animal excrement
- uncared for animals
- referrals to environmental health
- unsafe environment
- rural isolation.

#### 2.72 **Impediments to ongoing assessment and appropriate multidisciplinary support**

- failure to see the child
- no ease of access to whole house
- fear of violence and aggression
- failure to seek support and advice or consultation, as appropriate, from line manager
- failure to record concern and initial impact



- inability to retain objectivity
- unwitting collusion with family
- failure to see beyond conditions in the home
- child's view is lost
- geographical stereotyping
- minimising concern
- poor networking amongst professionals
- inability to see what is/is not acceptable;
- familiarity breeding contempt; and
- failure to make connections with information available from other services.

(Hammersmith & Fulham Inter-Agency Procedures 2002)

When staff become aware of any of the above features they should review the case with their line manager.

### **Children with Disability**

- 2.73 In recognising child abuse, all professionals should be aware that children with a disability can be particularly vulnerable to abuse. They may need a high degree of physical care, they may have less access to protection and there may be a reluctance on the part of professionals to consider the possibility of abuse.

### **Recognition of Abuse of Children with Disability**

- 2.74 Recognition of abuse can be difficult in that:

- symptoms and signs may be confused
- the child may not recognise the behaviour as abusive
- the child may have communication difficulties and be unable to disclose abuse
- there may be a dependency on several adults for intimate care
- there is a reluctance to accept that children with disabilities may be abused.

- 2.75 Children with disability will usually display the same symptoms and signs of abuse as other children. These may be incorrectly attributed, however, to the child's disability.

2.

### **3. Risk Factors Associated with Child Abuse**

- 2.76 A number of factors may increase the likelihood of abuse to a child. The following list is not exhaustive and does not preclude the possibility of abuse in families where none of these factors are evident.

### **Child**

- poor bonding due to neo-natal problems
- attachment interfered with by multiple caring arrangements
- a 'difficult' child, a 'demanding' baby
- a child under five years is considered to be most vulnerable
- a child's name or sibling's names previously on the Child Protection Register
- a baby/child with feeding/sleeping difficulties
- birth defects/chronic illness/developmental delay.

### **Parents**

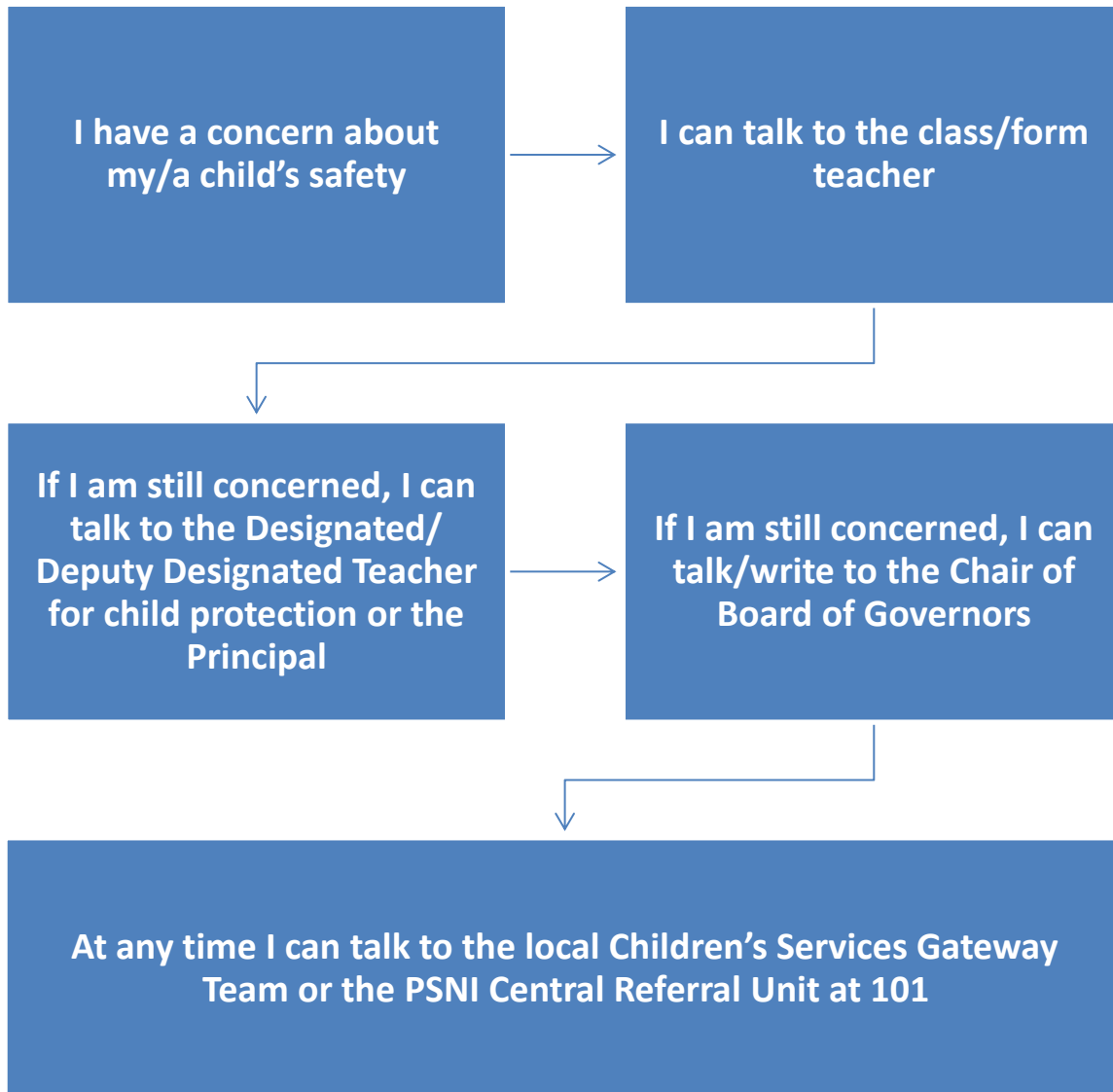
- both young and immature (i.e. aged 20 years and under) at birth of the child
- parental history of deprivation and/or abuse
- slow jealousy and rivalry with the child
- expect the child to meet their needs
- unrealistic expectations/rigid ideas about child development
- history of mental illness in one or both parents
- history of domestic violence
- drug and alcohol misuse in one or both parents of the child
- frequent changes of carers
- history of aggressive behaviour by either parent
- unplanned pregnancy
- unrealistic expectations of themselves as parents.

### **Home and Environmental Conditions**

- unemployment
- no income/poverty
- poor housing or overcrowded housing
- social isolation and no supportive family
- the family moves frequently
- debt
- large family

## APPENDIX 4

### If a Parent Has a Potential Child Protection Concern Within the School

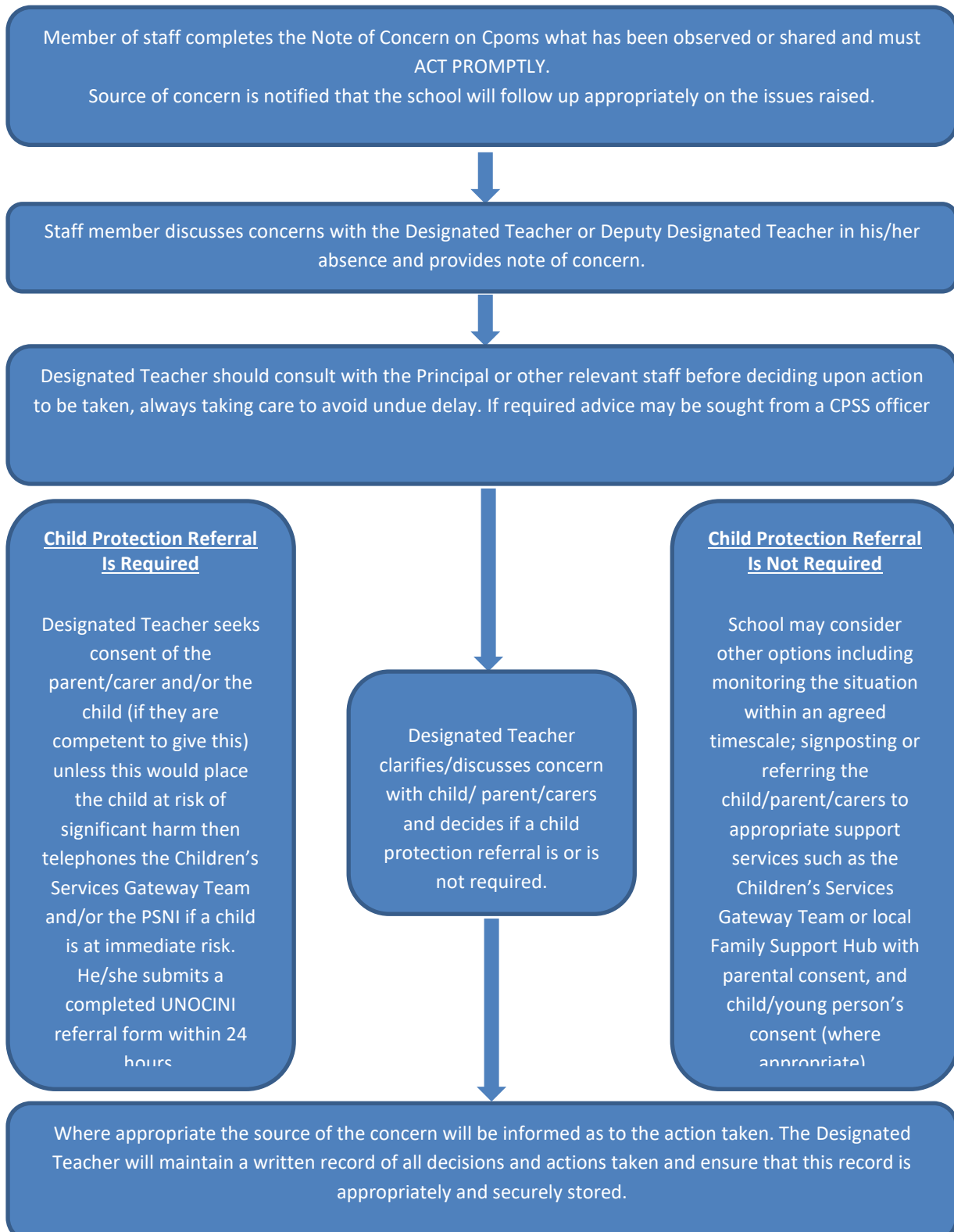


If you have escalated your concern as set out in the above flowchart, and are of the view that it has not been addressed satisfactorily, you may revert to the school's complaints policy. This policy should culminate in the option for you to contact the NI Public Services Ombudsman (NIPSO) who has the legislative power to investigate your complaint.

If a parent has a concern about a child's safety or suspect child abuse within the local community, it should be brought directly to the attention of the Children's Services Gateway Team.

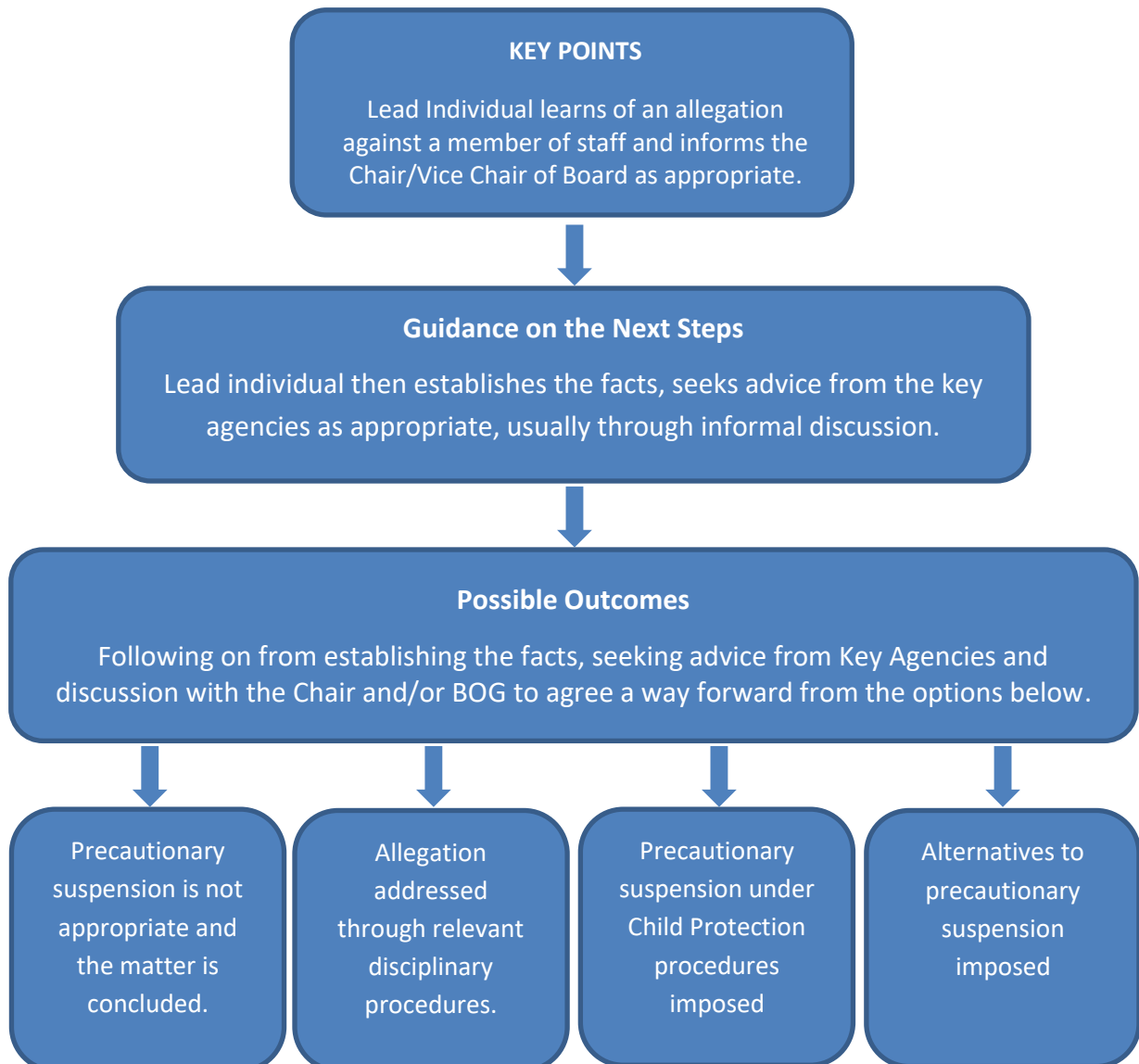
## APPENDIX 5

### Procedure Where the School Has Concerns, or Has Been Given Information, about Possible Abuse by Someone Other Than a Member of Staff



## APPENDIX 6

### Dealing with Allegations of Abuse against a Member of Staff



## APPENDIX 7: JOB DESCRIPTION & PERSON SPECIFICATION (2023)

### Designated Safeguarding Lead / Deputy Designated Safeguarding Lead

#### Job Description

#### JOB PURPOSE

Governing bodies and proprietors should ensure an appropriate senior member of staff, from the campus leadership team, is appointed to the role of designated safeguarding lead.

The designated safeguarding lead should take lead responsibility for safeguarding and child protection (including online safety).

This should be explicit in the role holder's job description. This appendix will be printed, and signed by the DSL and DDSLs to go in their personnel file.

The designated safeguarding lead should have the appropriate status and authority within the campus to carry out the duties of the post.

The role of the designated safeguarding lead carries a significant level of responsibility, and they should be given the additional time, funding, training, resources and support they need to carry out the role effectively.

Their additional responsibilities include providing advice and support to other staff on child welfare, safeguarding and child protection matters, taking part in strategy discussions and inter-agency meetings, and/or supporting other staff to do so, and to contributing to the assessment of children

#### Deputy designated safeguarding leads

The school will ensure there is a minimum of one Deputy DSL.

All deputies should be trained to the same standard as the designated safeguarding lead and the role should be explicit in their job description.

The same job description will apply to Deputies as well as DSL's

Whilst the activities of the designated safeguarding lead can be delegated to appropriately trained deputies, the ultimate lead responsibility for child protection, as set out above, remains with the designated safeguarding lead, this lead responsibility should not be delegated.

#### DUTIES

##### Availability

During term time the designated safeguarding lead (or a deputy) should always be available (during school hours 8am – 4pm) for staff in the school to discuss any safeguarding concerns.

Whilst generally speaking the designated safeguarding lead (or deputy) would be expected to be available in person, or via their OSG provided mobile.

##### Manage referrals

The designated safeguarding lead is expected to refer cases:

- of suspected abuse and neglect to the local authority children's social care as required and support staff who make referrals to local authority children's social care;
- to the Channel programme where there is a radicalisation concern as required and support staff who make referrals to the Channel programme;
- where a person is dismissed or left due to risk/harm to a child to the Disclosure and Barring Service as required; and
- where a crime may have been committed to the Police as required. NPCC - [When to Call the Police](#) should help understand when to consider calling the police and what to expect when working with the police.

### Working With Others

The designated safeguarding lead is expected to:

- act as a source of support, advice and expertise for all staff
- act as a point of contact with the safeguarding partners
- liaise with the headteacher or principal to inform him or her of all issues
- This should include being aware of the requirement for children to have an Appropriate Adult.
- Further information can be found in the Statutory guidance - PACE Code C 2019.
- as required, liaise with local authorities for child protection concerns in cases which concern a staff member
- liaise with staff (especially teachers, pastoral support staff, school nurses, IT technicians, senior mental health leads and special educational needs coordinators (SENCO's), or the named person with oversight for SEND in a college and senior mental health leads) on matters of safety and safeguarding and welfare (including online and digital safety) and when deciding whether to make a referral by liaising with relevant agencies so that children's needs are considered holistically
- liaise with the senior mental health lead and, where available, the mental health support team, where safeguarding concerns are linked to mental health
- promote supportive engagement with parents and/or carers in safeguarding and promoting the welfare of children, including where families may be facing challenging circumstances
- work with the headteacher and relevant strategic leads, taking lead responsibility for promoting educational outcomes by knowing the welfare, safeguarding and child protection issues that children in need are experiencing, or have experienced, and identifying the impact that these issues might be having on children's attendance, engagement and achievement at school or college.
- This includes:
- ensuring that the school or college knows who its cohort of children who have or have had a social worker are, understanding their academic progress and attainment, and maintaining a culture of high aspirations for this cohort, and
- supporting teaching staff to provide additional academic support or reasonable adjustments to help children who have or have had a social worker reach their potential, recognising that even when statutory social care intervention has ended, there is still a lasting impact on children's educational outcomes.

### Raising Awareness

The designated safeguarding lead should:

- ensure each member of staff has access to, and understands, the school's or college's child protection policy and procedures, especially new and part-time staff
- ensure the school's or college's child protection policy is reviewed annually (as a minimum) and the procedures and implementation are updated and reviewed regularly, and work with governing bodies or proprietors regarding this
- ensure the child protection policy is available publicly and parents know that referrals about suspected abuse or neglect may be made and the role of the school or college in this
- link with the safeguarding partner arrangements to make sure staff are aware of any training opportunities and the latest local policies on local safeguarding arrangements, and
- help promote educational outcomes by sharing the information about the welfare, safeguarding and child protection issues that children who have or have had a social worker are experiencing with teachers and school and college leadership staff.

### **Training, knowledge, and skills**

The designated safeguarding lead (and any deputies) should undergo training to provide them with the knowledge and skills required to carry out the role.

This training should be updated at least every two years and should take place with the Local safeguarding partners

The designated safeguarding lead (and any deputies) should undertake Prevent awareness training every two years

Training should provide designated safeguarding leads with a good understanding of their own role, how to identify, understand and respond to specific needs that can increase the vulnerability of children, as well as specific harms that can put children at risk, and the processes, procedures and responsibilities of other agencies, particularly local authority children's social care, so they:

- understand the assessment process for providing early help and statutory intervention, including local criteria for action and local authority children's social care referral arrangements
- have a working knowledge of how local authorities conduct a child protection case conference and a child protection review conference and be able to attend and contribute to these effectively when required to do so
- understand the importance of the role the designated safeguarding lead has in providing information and support to local authority children social care in order to safeguard and promote the welfare of children
- understand the lasting impact that adversity and trauma can have, including on children's behaviour, mental health and wellbeing, and what is needed in responding to this in promoting educational outcomes
- are alert to the specific needs of children in need, those with special educational needs and disabilities (SEND), those with relevant health conditions and young carers
- understand the importance of information sharing, both within the campus, and with the safeguarding partners, other agencies, organisations and practitioners
- understand and support the campus with regards to the requirements of the Prevent duty and are able to provide advice and support to staff on protecting children from the risk of radicalisation
- are able to understand the unique risks associated with online safety and be confident that they have the relevant knowledge and up to date capability required to keep children safe whilst they are online at school or college
- can recognise the additional risks that children with special educational needs and disabilities (SEND) face online, for example, from bullying, grooming and radicalisation and are confident they have the capability to support children with staying safe online
- obtain access to resources and attend any relevant or refresher training courses, and
- encourage a culture of listening to children and taking account of their wishes and feelings, among all staff, in any measures the campus may put in place to protect them.

In addition to the formal training set out above, their knowledge and skills should be refreshed (this might be via e-bulletins, meeting other designated safeguarding leads, or simply taking time to read and digest safeguarding developments) at regular intervals, as required, and at least annually, to allow them to understand and keep up with any developments relevant to their role.



### **Providing Support to Staff**

Training should support the designated safeguarding lead in developing expertise, so they can support and advise staff and help them feel confident on welfare, safeguarding and child protection matters. This includes specifically to:

ensure that staff are supported during the referrals processes, and support staff to consider how safeguarding, welfare and educational outcomes are linked, including to inform the provision of academic and pastoral support.

### **Understanding the views of children**

It is important that all children feel heard and understood. Therefore, designated safeguarding leads (and deputies) should be supported in developing knowledge and skills to:

encourage a culture of listening to children and taking account of their wishes and feelings, among all staff, and in any measures the campus may put in place to protect them, and, understand the difficulties that children may have in approaching staff about their circumstances and consider how to build trusted relationships which facilitate communication.

### **Holding and sharing information**

The critical importance of recording, holding, using and sharing information effectively is set out in the policy and therefore the designated safeguarding lead should be equipped to:

- understand the importance of information sharing, both within the school and college, and with other schools and colleges on transfer including in-year and between primary and secondary education, and with the safeguarding partners, other agencies, organisations and practitioners
- understand relevant data protection legislation and regulations, especially the Data Protection Act 2018 and the UK General Data Protection Regulation (UK GDPR), and
- be able to keep detailed, accurate, secure written records of concerns and referrals and understand the purpose of this record-keeping.

### **Information sharing and managing the child protection file**

The designated safeguarding lead is responsible for ensuring that child protection files are kept up to date. Information should be kept confidential and stored securely. It is good practice to keep concerns and referrals in a separate child protection file for each child.

Records should include:

- a clear and comprehensive summary of the concern
- details of how the concern was followed up and resolved
- a note of any action taken, decisions reached and the outcome.
- They should ensure the file is only accessed by those who need to see it and where the file or content within it is shared, this happens in line with information sharing advice as set out in the policy
- Where children leave the campus (including in year transfers) the designated safeguarding lead should ensure their child protection file is transferred to the new school or college as soon as possible, and within 5 days for an in-year transfer or within the first 5 days of the start of a new term. This should be transferred separately from the main pupil file, ensuring secure transit, and confirmation of receipt should be obtained. Receiving schools and colleges should ensure key staff such as designated safeguarding leads and special educational needs co-ordinators (SENCO's) or the named person with oversight for SEND in colleges, are aware as required.

Lack of information about their circumstances can impact on the child's safety, welfare and educational outcomes. In addition to the child protection file, the designated safeguarding lead should also consider if it would be appropriate to share any additional information with the new school or college in advance of a child leaving to help them put in place the right support to safeguard this child and to help the child thrive in the school or college. For example, information that would allow the new school or college to continue supporting children who have had a social worker and been victims of abuse and have that support in place for when the child arrives

### Reporting To

- Reporting to Campus Principal and Associate Principal for Safeguarding
- Safeguarding CA

## SUPPORT FOR THE ROLE

The role is supported on occasion by the NSO and the CP

OneSchool Global UK provides a range of support services in areas such as ICT, recruitment, HR, policies, resources and compliance.

**Employee Signature:**

---

**Line Manager Signature:**

---

**Date:**

---

ISSUED BY

OneSchool Global UK

Issue date: September 2023

**JOB TITLE**
**Person Specification**

Specification	Essential	Desirable
<b>Experience and Knowledge</b>	<ul style="list-style-type: none"> <li>Up to date DSL training, dated within 2 years provided by the campuses LSP</li> <li>Member of the Senior Leadership Team</li> </ul>	
<b>Education and Qualifications</b>	<ul style="list-style-type: none"> <li>Appropriate teaching qualification, or equivalent qualification, appropriate to role in school and to the role of DSL.</li> <li>Safer Recruitment trained</li> <li>E-Safety trained, in a course that is recognized by the local safeguarding authority where the school is based</li> <li>Trained in the PREVENT Duty</li> </ul>	
<b>Skills and Abilities</b>	<ul style="list-style-type: none"> <li>Good communication skills written and verbal</li> <li>Good organisational skills</li> <li>Good record keeping skills</li> <li>A positive role model of professional practice and conduct of others</li> <li>Able to communicate with a range of stakeholders with calmness, reflection and professionalism</li> </ul>	
<b>Training</b>	<ul style="list-style-type: none"> <li>Willingness to undertake relevant training to the role, ongoing, and identify own development needs</li> <li>Committed to ongoing CPD and Professional development</li> </ul>	
<b>Attributes and Attitudes</b>	<ul style="list-style-type: none"> <li>Flexible approach and positive attitude towards work</li> <li>Punctual and reliable</li> <li>Ability to adapt to changes in the workplace</li> <li>Ability to remain focused and calm even with dealing with challenging and complex circumstances, some of which will be upsetting</li> <li>Ability to work as part of a team</li> <li>Ability to reflect on decisions and next steps, with the premise of 'what if I'm right'</li> </ul>	
<b>Equality, diversity and inclusion</b>	<ul style="list-style-type: none"> <li>Knowledge, understanding and commitment to equality, diversity and inclusion informed by practical experience and application</li> </ul>	
<b>Safeguarding</b>	<ul style="list-style-type: none"> <li>Knowledge, understanding and commitment to safeguarding and promoting the welfare of students</li> <li>Ability to form and maintain appropriate relationships and personal boundaries with students</li> </ul>	

The post holder will be required to complete an enhanced Disclosure Barring Service (DBS) Check with appropriate barred list checks, or the equivalent, and must be eligible to work in the UK.

OneSchool Global UK is committed to safeguarding and promoting the welfare of children and young people and expects all staff to share this commitment.

All staff are expected to be committed to the Equal Opportunities Policy.