



Nottingham Campus Prospectus

2023-2024




Introduction

This School is a registered and accredited Independent School established to provide a quality education to the UK community and, in particular, to Brethren students.

The School's Ethos, Values Statement and Guiding Principles govern the School, and are reflected in a series of policies, procedures and handbooks which have been developed to meet statutory and registration requirements and are to be adhered to in all aspects of the operation of the School.

Contents



About OneSchool Global	4
OneSchool Global Ethos	5
OneSchool Global Vision and Mission Statements	6
OneSchool Global Values	7
Welcome	8
History	10
Global House System	11
Our Curriculum	14
OneSchool Awards	15
Career Advancement Programme	16
Policies	18
Teachers and Staffing	19
School Information	20
Testimonials	22

About OneSchool Global UK

OneSchool Global is a global school, with over 130 campuses in 20 countries, including cities such as New York, Paris, Sydney, Rome, Auckland, Copenhagen, Los Angeles and San Francisco.

With an innovative approach to learning, delivered in cutting-edge, technology-empowered physical and digital learning environments, OneSchool Global is preparing life-ready students who learn how to learn.

Our self-directed learning model places students at the centre of all that we do. We challenge traditional and dated pedagogy and embrace technology to deliver the best possible learning outcomes for our students.

OneSchool Global recruits and develops high quality teachers. Our teachers partner with our students in their learning and rather than being considered the 'sage on the stage', play a 'guide on the side role' to support students.

Our in-house Teacher Academy provides teachers with the training they need to be the best they can be. We provide teachers with the skills they need to be successful at OneSchool Global and skills that will make them highly capable and competent in teaching in a digital world.

OneSchool Global is a school that lives its values and is guided by the School's ethos. The School is generously supported via the donation of time and financial support from members of the Plymouth Brethren Christian Church.



[Click on the OneSchool logo to learn more about how this cutting-edge schooling system was inspired and how this awesome vision is being realised.](#)





OneSchool Global Ethos

At OneSchool Global, we are committed to a culture where students are encouraged to develop their full potential and acquire the discipline of learning how to learn while upholding Christian teachings and beliefs.

The truth and authority of the Holy Bible and strong family values underpin the commitment of the School to provide quality in every facet of education - curriculum, teachers, facilities, management, and discipline - in a safe and caring environment.

OneSchool Global Vision Statement



A global education ecosystem that develops life-ready students who learn how to learn and achieve.

To ensure our students are life-ready, we need to teach differently. To be life-ready in today's world, our students need to learn how to learn. To be life ready, our students need to develop independent and critical thinking skills, and skills such as teamwork and collaboration

It is these skills that form an aptitude base that allows a student to adapt. Most importantly, these critical skills are transferable. When industry changes, when entire fields of work and job types are no longer required, it will be the life-ready, critical thinkers who stand the test of time and find new ways to add value.

We are prepared to do things differently at OneSchool Global to deliver on this vision. We challenge traditional and outdated pedagogical models. Our learning centres, the way we embed technology in them, and ultimately our students, are a testament to this.

OneSchool Global Mission Statement



“Learning to Learn”

The School is committed to creating and delivering learning programmes that meet the educational needs of each student, and to nurture the attitudes and skills necessary for the continual learning and personal growth throughout life.

“Learning to Learn” means to use learning as a tool whereby students are equipped with the ability to think critically, process information perceptually, analyse data accurately, and evaluate situations intelligently in order that they fulfil their true potential.

OneSchool Global Values



At OneSchool Global each student, parent and staff member shall uphold the values of the School which include:

Integrity – uprightness, honesty and decorous conduct, governed by the Holy Bible,

Care and Compassion – kindness, consideration and generosity to all,

Respect – for all people, property, opinions and those in authority,

Responsibility – for our actions, progress and the environment and,

Commitment – to self-discipline and the pursuit of excellence.





Welcome Message



Welcome to OneSchool Global UK Nottingham Campus.

It is an exciting place to be. Judged to be outstanding in all areas by the School Inspection Service, February 2016, the campus has become a leading-edge OneSchool campus committed to the highest standards of teaching and self-directed learning.

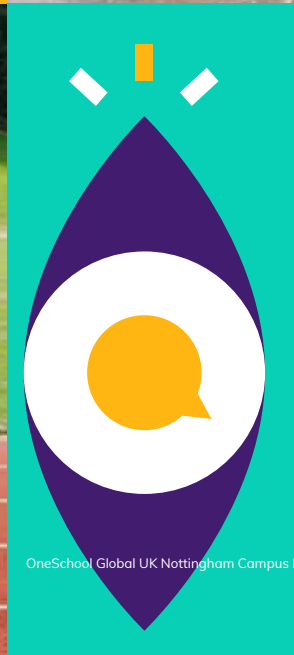
Our school is well renowned for academic success, but its real strength lies in how the school cherishes and develops the talents, skills and aspirations of every individual.

Happiness and success go hand-in-hand and visitors often comment on the warm and friendly atmosphere, and the strong sense of community which strikes them as they walk through our doors. Our students really do thrive and they leave school well-equipped to take on the challenges of adult life.

We are passionate about our school and our students; we hope that we will surpass your expectations in providing the very best for your child. We look forward to meeting you and showing you our school in action.

Mr John McCroft
Lead Campus Administrator







Our History



Trent Valley Education Trust established Three Shires School in 1995 as a Tutorial Centre. During the School Year 2003/2004 application was made for Independent School status and Focus School Long Eaton Campus was formally registered as a School of Religious Character. In September 2009 Three Shires School moved from its original premises in Beeston to the Focus School Long Eaton Campus in Long Eaton. Focus School Long Eaton Campus is formally affiliated to the Focus Learning Trust, which exists to provide 'Direction, Management, Programmes and Support' to all affiliated schools.

September 2009 also saw the commencement of a new primary school providing education to pupils in Years 3–6. Today the school is run as an Independent School with a Christian ethos providing a broad education for pupils attending from Year 3 to Year 13.

April 2019 saw the rebrand of Focus Schools to OneSchool Global UK which further enhances connections with our global peers bringing us all into one global school. Along with that came a name change for our Campus - OneSchool Global UK Nottingham Campus.

Nottingham Campus now occupies aesthetically pleasing buildings of good quality with many specialist facilities. It is generously staffed with professional teachers who are all fully qualified and experienced in their subjects. There is a strong emphasis through the Whole School Assessment Policy on students achieving their academic potential and considerable progress has been made in this regard.

There are extremely open and positive relationships between staff and trustees all of whom work extremely hard for the benefit of the students. The staff are flexible and cooperative. The school promotes personal development through a strong combination of Form Tutor and PSHE. The close links between the Primary and Secondary Departments assist transition for students into Year 7 and fosters Whole School activities. The SEND Programme is particularly well developed providing strong support to students. The school has access to specialist facilities for games and very committed games staff. The school has a strong and pro-active SLT who meet weekly and operate in full partnership with the trustees. There are extremely good relationships with parents who are very supportive of what the school is seeking to achieve. Above all the school seeks to find the balance between a relaxed and friendly atmosphere with the rigour required for a successful school.

The Global House System



The Global House System is based around the ethos of inclusion and encouraging teamwork.

It is designed to reward academic work, effort, sporting achievements and good citizenship. It is the role of the House System to embrace all students and provide a climate of success for all.

The Global House System consists of three houses each with an assigned colour as shown below. These houses are run globally throughout our affiliated schools, meaning that we can encourage teamwork with other regions, not just within our campus, thus enhancing our students' desire to strive for their best, due to a much wider area of healthy and constructive competition.

Each student is assigned to a House and will normally remain in that House for his/her duration at the campus. Many house events and competitions are run which link to learning and help foster both teamwork and self-directed learning skills. The Global House System encourages healthy participation in activities and is well supported by staff and student leaders.



Charitable Fundraising

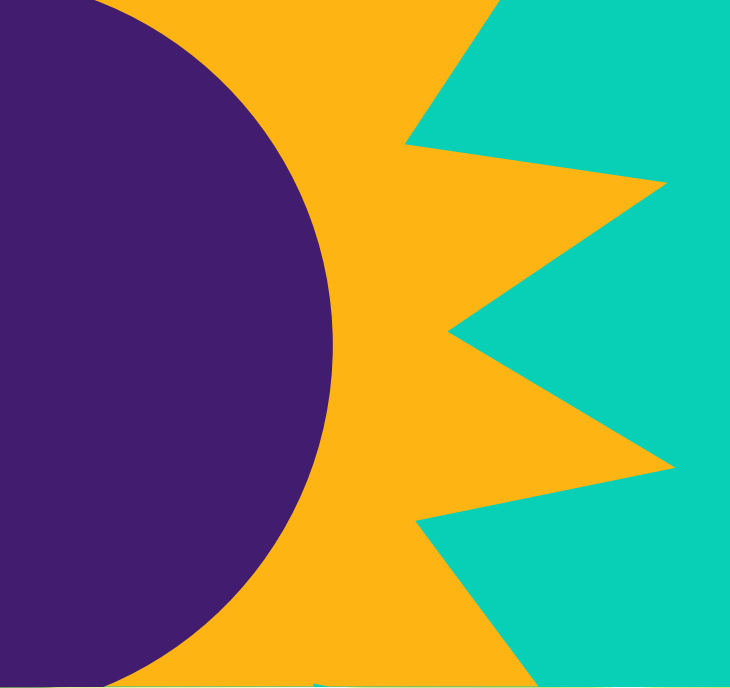


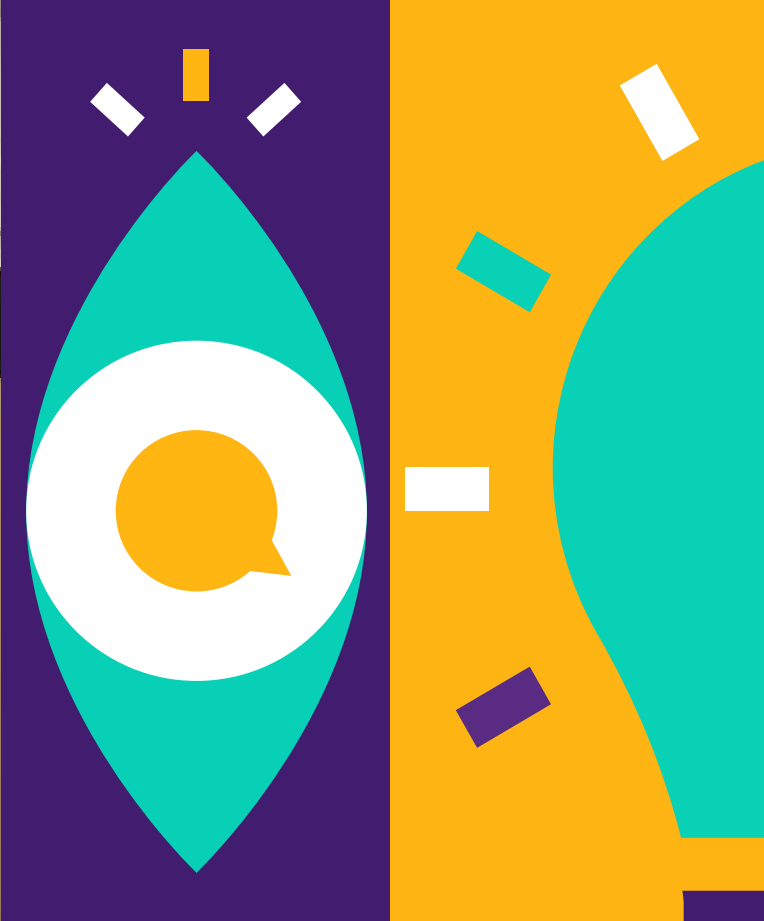
At Nottingham Campus the whole community is committed to helping those less fortunate than ourselves.

There is a strong, student-led culture for fundraising and charity at Nottingham. This academic year students have raised money for many charities. The majority of fundraising initiatives are student-led, with representatives from our student council coming up with ideas for school-wide events. Not only does each initiative raise hundreds of pounds for charity, but it also gives students valuable experience in organising and leadership skills.

Charitable donations made recently include:

- British Heart Foundation
- British Legion
- Guide Dogs for the Blind
- Macmillan
- RRT
- Long Eaton Food Bank





“

Many thanks for all you have done to get the best out of the children.

”

Our Curriculum



...wholly supports the School's ethos in promoting Christian values and provides a balance, ensuring students develop academically, aesthetically, morally and physically.

Nottingham Campus has adopted the Curriculum Policy developed by OneSchool Global UK. The curriculum is designed to ensure that every student can realise their potential. The curriculum is assignment-based, enabling the self-directed ambition of the organisation to be fulfilled. All students follow a personalised and challenging curriculum.

Years 3-6

Art
Design & Technology
English
Geography
History
IT
LAMDA
Mathematics
MFL
Music
PSHE
Physical Education
RSE
Science

Years 7-8

Art
Citizenship
Design & Technology
English
Geography
History
IT
LAMDA
Mathematics
MFL
PSHE
Physical Education
RSE
Science

Years 9-11

Art, Craft & Design
Citizenship
Design & Technology
English
Food & Nutrition
French
Geography
History
ICT
LAMDA
Mathematics
PSHE
Physical Education
RSE
Science

Years 12-13

All of our students progress to the sixth form and are offered a broad range of curriculum options designed to meet the abilities and aspirations of all our learners.

Cambridge International A Level qualifications are offered in Art & Design, Design & Technology, English, History, Geography, Mathematics, Accounts, Law, Business Studies, French and German, and Global Perspectives alongside Cambridge Technical qualifications in IT, Digital & Creative Media, and Business, a range of Level 2 qualifications, and Autodesk Fusion 360.

Additional subjects include Physical Education and PSHE, while courses such as Chef Skills, LAMDA Speaking in Public, London Institute of Banking and Finance and Extended Project Qualifications are available to students.

Digital technology, including Zoom and Canvas platforms enable campuses to collaborate with other schools for subject delivery which enables students to study subjects that would not normally be economically viable.

Xello and the Careers Advantage Programme also adds a unique and high quality vocational element to our curriculum which supports all students in gaining a better understanding of their career pathway and progression routes helping to ensure they are life-ready on graduation from OneSchool Global UK and excited about embarking on future post graduate qualifications.

Extra-Curricular activities are a strength of our school. Our students have the opportunity to collaborate on extra-curricular projects and activities at campus, regional and global level. Recent highlights including our termly Choir Festival, annual Public Speaking Competition and inter campus debating opportunities. Our extra-curricular offer is a key part of our curriculum and an area of continuous growth and development for OSGUK.

OneSchool Global Awards



The aim of the OneSchool Global Awards programme is to motivate students to achieve across a range of personal and academic qualities. It is a citation based reward system which acknowledges exemplary student behaviour in relation to our values and skills.

The main focus for awarding a citation is based on OneSchool Global Values Integrity, Care & Compassion, Respect, Responsibility, Commitment.

The value is demonstrated through a OneSchool Global Skill Academic Achievement, Leadership, Involvement in School Activities, Diligence, Management Skills.



Integrity



Care & Compassion



Respect



Responsibility



Commitment



Citations are key rewards within OneSchool Global and contribute to the achievement of Bronze, Silver, Gold and Platinum Awards.

The OSG Award is inextricably linked to the OSG House Cup. House Points and citations celebrate students who go above and beyond in living our OneSchool Global Values and can demonstrate progression in OneSchool Global Skills.



Hit the ground
running

Career Advancement Programme



Bridging the gap between school and work; OneSchool Global UK offer a unique career advancement plan to all our students and this is proven to prepare them for the world of work:

What is CAP?

The Career Advantage Programme (CAP) provides all students with the opportunity to gain the skills and aptitude to achieve rapid success in their post-school careers.

CAP does this by:

- Providing Career Fundamentals and Business Foundations offered to all students in Year 12 and 13.
- Analysing the capability of each student professionally to ensure the student can effectively complete the courses.
- Sponsorship for students to carry out extra-curricular studies in the last two years of school.

The CAP curriculum

All students in Year 12 complete a Career Fundamentals course which is a global standard for employers. For CAP students, the diploma-type courses provide a theoretical and academic rigour which underpins the students' academic programme and the career skills-based study provides practical, real-world approaches to learning and helps them to develop skills and competencies required for lifelong learning.

Visit the website to find out more

<https://www.oneschoolglobal.com/cap/>

Beyond the classroom



Why is CAP Important?

There is an increasing awareness globally that high school studies alone are not adequately preparing students for the modern workforce. The Career Advantage Programme is aimed at equipping our children with the necessary skills to bring positive benefits to our businesses from day one.

Important for students:

- improving their employment opportunities
- improving the potential of earning a higher income on graduation
- empowering rapid progress along their career path

Important for businesses:

- higher value employees that are useful from day one
- employees with an established work ethic; self-starters, self-finishers, self-motivators
- employees that understand the value of study and training

“The innovative approach to the curriculum, teaching and learning is what makes this school outstanding because it enables all pupils to make excellent progress and achieve their very best”



- Business Owner



Policies and Documents



Nottingham Campus is committed to the safeguarding and protection of its students in line with national guidance. We endeavour to provide a safe and welcoming environment where all children are safe, respected and valued, as well as being underpinned by the following two key principles:

- A child-centred approach; for services to be effective they should be based on a clear understanding of the needs and views of children.
- Everyone employed and who comes into contact with children at Nottingham Campus has a responsibility in relation to safeguarding.

At Nottingham Campus we listen to students and maintain a child-centred approach to Safeguarding and Child Protection. We provide a safe environment for students both under and over 18, especially those who are considered vulnerable. All of our Policies are available upon request from our school office or via email: nottingham@uk.oneschoolglobal.com

Administration of Medicines Policy

Admissions Policy

Anti-Bullying Policy

Attendance Policy

Behaviour Management Policy

Complaints Procedure

Curriculum Policy

EAL Policy

Equal Opportunities Policy

Exclusions Policy

Fire Safety (Prevention) Policy

First Aid Policy

Health & Safety Policy

Learning Support (SEND) Policy

Risk Assessment Policy

RSE Policy

Safeguarding & Child Protection Policy

Safer Recruitment Policy

Supervision of Students Policy

Additionally, the particulars of the arrangements for promoting student health and safety on educational trips and visits are available from the school office on request.

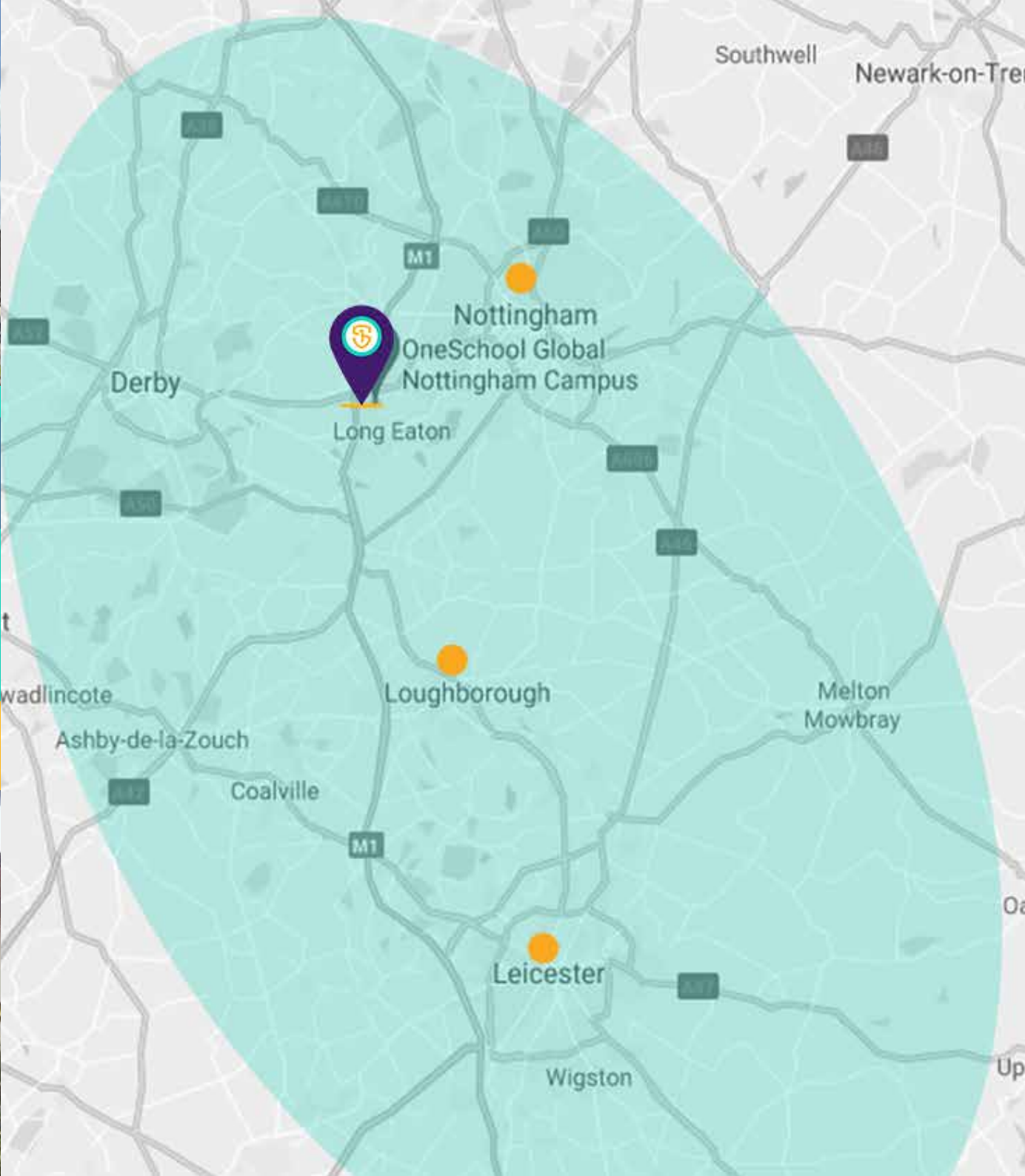
Teachers and Staffing



All OneSchool Global UK Nottingham Campus teachers hold qualifications applicable to their post. In the absence of qualifications in some practical subjects previous experience will be considered if applicable. All staff, governors, trustees and volunteers have been subject to regulatory safer recruitment checks.

Name	Assigned Responsibilities	Qualifications
Elizabeth Baird	National Business Teacher Assistant Campus Principal	PGCE, BA Events Management
Sylvia Barnett	Lunchtime Supervisor/Ancillary	
Ella Billson	Learning Support Assistant	BA Hons in Education Studies with Special Educational Needs and Disabilities
Amy Bonser	Campus Administration Officer & Exam Invigilator	
Alex Cannell	Year 5-6 Teacher Assistant Campus Principal	BSC PGCE
Julie Dormer	Campus Admin Health & Safety Officer	IOSH NVQ 2&3 Learning Support PCSC RSA Typing & Word Processing
Stephen Elliott	KS2-4 Mathematics ARHOD for Mathematics	BA Hons History PGCE Mathematics
Caroline Gray	Regional Principal	BA Hons Theology & Religious Studies PGCE Secondary MA
Beth Hardwick	National Business Teacher Deputy Designated Safeguarding Lead Exams Officer	PGCE, BA Business & Management Studies
Christina Langsdale	National Business Teacher RHOD for Business Citizenship Teacher	BA Hons European Studies & Tourism Postgraduate Cert in Management (CMS) Postgraduate Diploma in Management (DMS)

Name	Assigned Responsibilities	Qualifications
Phillipa Macfarlane	RHOD for Art/DT Art Teacher	PGCE Lifelong Learning, Bachelor of Arts in Fine Art
Lauren Medland	Maths Teacher Deputy Designated Safeguarding Lead	MA Special and Inclusive Education BSc Psychology
Elizabeth Millar	Year 3-4 Teacher	BA PGCE
Amber Mountain	National Digital Media Teacher	PGCE and BA (Hons) Packaging Design
Layla Rowan-Maw	Assistant Campus Principal ARHOD for English KS3 English	BA Hons English
Victoria Sancto-Arora	KS2-5 French & German	BA Hons MFL PGCE Secondary
Liane Sankey	KS2-4 Science	BSc Biology CPT3a QTS
Ben Thompson	Campus Principal KS2 Lead Practitioner Acting Designated Safeguarding Lead	BEd (Hons) Primary
Andrew Turner	Citizenship Teacher Law Teacher RHOD for Law	BA International Relations and Law MA Global Politics and Human Rights Law, PGCE History and Citizenship
Richard Tyler	KS3/5 History KS3 PHSE	BA Hons PGCE
Christine White	Learning Support Assistant	NVQ Level 2 Learning Support
Roland Wilson	Caretaker	



School Information



OneSchool Global UK Nottingham Campus

Wellington Street, Long Eaton, Nottingham NG10 4HR

- Tel: 0115 973 3568
- nottingham@uk.oneschoolglobal.com
- oneschoolglobal.com/nottingham

Monday to Friday 8:45 AM - 15:00 PM

Proprietor: OneSchool Global UK

OSG UK No: 608
Examination Centre No. 68654
Charity No: 1181301
DfE No: 66/6043

Compliants and Exclusions (2022-2023):

There were three complaints and no exclusions during the 2022-2023 academic year.

CA Team	Mr John McCroft - Lead CA Mr Carl Groombridge
CA Board	Mr Keith Lloyd Mr Rick Birch Mr Darryl Fear Mr Harvey Abernethie Mr Laurie Burke
Campus Principal	Mr Ben Thompson
OSG UK Representatives	Mr Anthony Fryer - Regional Team Leader Mrs Kimberley Hutton - Regional Principal
Holiday/Out of Hours Contact	Mr John McCroft - 07848 455958
Correspondence for the Chair of the Trustees should be addressed to the Principal Office	Mr Anthony Fryer OneSchool Global UK Nottingham Campus The Precinct Warwick Poseidon Way Warwick CV34 6BY

For further information and the school calendar please visit our website: oneschoolglobal.com/nottingham
Visit the the OneSchool Global UK website: oneschoolglobal.com

Everyone, including pupils, spoke honestly and passionately about SDL and the positive impact it has had on their learning and teaching. The positive climate for learning was visible and palpable throughout the school including the primary phase. I found the relationships at all levels, between staff, staff and pupils, pupil to pupil as well as staff to parents, was mutually respectful and supportive. Creating positive change and maintaining that momentum is due to sound leadership as Headteacher and having a supportive and proactive team to support the planned school improvements (as well as boundless energy and enthusiasm!)

Neighbour

Nottingham Campus is the place to attend if you want to see awesome success and development in every student that attends, it is at the cutting edge of education and would have to be the best of the best, seen in the 'outstanding' inspection report.

Parent

My wife & I would like to thank you and all the staff and trustees for the truly excellent experience our children prove on a daily basis. The whole school has an immensely positive, progressive and stimulating learning atmosphere and I think we can see the results in the GCSE and A level results achieved by both of our children. For one of them to have gained two A's and seven B's in his GCSE's with an ADHD condition that was categorised as within the top 10% when aged 6 years, just goes to show the brilliance of the teaching and the personal care and input from the teachers and trustees. It is all very much appreciated.

Parent

Nottingham Campus is a truly wonderful place to work as a teacher for so many reasons: students here are enthusiastic and love learning, which means that as a teacher you can share the passion that you have for your subject and continue to learn yourself; students, staff, trustees, parents and the wider community are all fully supportive of the school and form a cohesive community who all want the same thing the best for the students; the approach to learning, namely Self-Directed Learning means that no two days are the same and school is exciting, fun and students have far more ownership of their learning; extra-curricular opportunities are varied and driven by student interest. We are a happy school where we all come every day keen to contribute, learn and achieve our potential as staff or student and I don't think there is a more important thing you can say about a school than that!

Teacher





OneSchool Global

Learning to learn

OneSchool Global UK Nottingham Campus
Wellington Street
Long Eaton
Nottingham
NG10 4HR
Tel: 0115 973 3568
Email: nottingham@uk.oneschoolglobal.com

OneSchool Global UK
The Precinct Warwick
Poseidon Way
Warwick
CV346BY
Tel. 0330 055 5600
Email: support@uk.oneschoolglobal.com