



Reading Primary Campus Prospectus

2023-2024




Introduction

This School is a registered and accredited Independent School established to provide a quality education to the UK community and, in particular, to Brethren students.

The School's Ethos, Values Statement and Guiding Principles govern the School, and are reflected in a series of policies, procedures and handbooks which have been developed to meet statutory and registration requirements and are to be adhered to in all aspects of the operation of the School.

Contents



About OneSchool Global	4
OneSchool Global Ethos	5
OneSchool Global Vision and Mission Statements	6
OneSchool Global Values	7
Welcome	8
History	10
Global House System	11
Our Curriculum	14
OneSchool Awards	15
Policies	16
Teachers and Staffing	17
School Information	18
Testimonials	20

About OneSchool Global UK

OneSchool Global is a global school, with over 130 campuses in 20 countries, including cities such as New York, Paris, Sydney, Rome, Auckland, Copenhagen, Los Angeles and San Francisco.

With an innovative approach to learning, delivered in cutting-edge, technology-empowered physical and digital learning environments, OneSchool Global is preparing life-ready students who learn how to learn.

Our self-directed learning model places students at the centre of all that we do. We challenge traditional and dated pedagogy and embrace technology to deliver the best possible learning outcomes for our students.

OneSchool Global recruits and develops high quality teachers. Our teachers partner with our students in their learning and rather than being considered the 'sage on the stage', play a 'guide on the side role' to support students.

Our in-house Teacher Academy provides teachers with the training they need to be the best they can be. We provide teachers with the skills they need to be successful at OneSchool Global and skills that will make them highly capable and competent in teaching in a digital world.

OneSchool Global is a school that lives its values and is guided by the School's ethos. The School is generously supported via the donation of time and financial support from members of the Plymouth Brethren Christian Church.



Click on the OneSchool logo to learn more about how this cutting-edge schooling system was inspired and how this awesome vision is being realised.





OneSchool Global Ethos

At OneSchool Global, we are committed to a culture where students are encouraged to develop their full potential and acquire the discipline of learning how to learn while upholding Christian teachings and beliefs.

The truth and authority of the Holy Bible and strong family values underpin the commitment of the School to provide quality in every facet of education
- curriculum, teachers, facilities, management, and discipline - in a safe and caring environment.

OneSchool Global Vision Statement



A global education ecosystem that develops life-ready students who learn how to learn and achieve.

To ensure our students are life-ready, we need to teach differently. To be life-ready in today's world, our students need to learn how to learn. To be life ready, our students need to develop independent and critical thinking skills, and skills such as teamwork and collaboration

It is these skills that form an aptitude base that allows a student to adapt. Most importantly, these critical skills are transferable. When industry changes, when entire fields of work and job types are no longer required, it will be the life-ready, critical thinkers who stand the test of time and find new ways to add value.

We are prepared to do things differently at OneSchool Global to deliver on this vision. We challenge traditional and outdated pedagogical models. Our learning centres, the way we embed technology in them, and ultimately our students, are a testament to this.

OneSchool Global Mission Statement



“Learning to Learn”

The School is committed to creating and delivering learning programmes that meet the educational needs of each student, and to nurture the attitudes and skills necessary for the continual learning and personal growth throughout life.

“Learning to Learn” means to use learning as a tool whereby students are equipped with the ability to think critically, process information perceptually, analyse data accurately, and evaluate situations intelligently in order that they fulfil their true potential.

OneSchool Global Values

At OneSchool Global each student, parent and staff member shall uphold the values of the School which include:

Integrity – uprightness, honesty and decorous conduct, governed by the Holy Bible,

Care and Compassion – kindness, consideration and generosity to all,

Respect – for all people, property, opinions and those in authority,

Responsibility – for our actions, progress and the environment and,

Commitment – to self-discipline and the pursuit of excellence.



Welcome Message

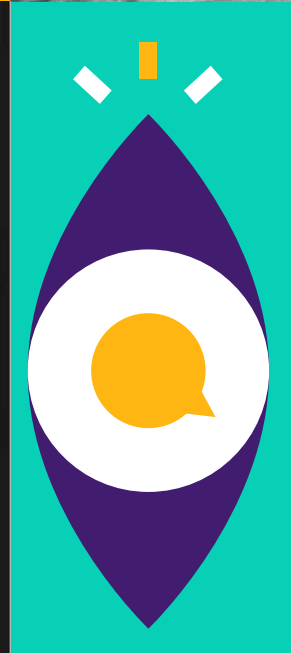
It is with great pleasure that I welcome you to Reading Primary Campus. As being part of the worldwide OneSchool Global (OSG) organisation we are a school that believes we can make a difference. Our teachers, staff and students all see themselves as life-long learners and we work together to aspire, achieve and enjoy the opportunities our school gives us and the strength of being part of a community.

At Reading Primary, we are united in our aim to ensure that our students know they are safe, valued and supported whilst at the same time being challenged to achieve their best at all times through a unique pedagogy of self-directed learning (SDL).

As new pupils join the school they will be supported to grow in learning and confidence. At Reading Primary Campus, we believe in OSG values – RESPECT, CARE & COMPASSION, INTEGRITY, RESPONSIBILITY and COMMITMENT. We strive to ensure that all members of our community experience trusting and caring relationships with teachers and staff so that they can do well. If students are to become leaders of their own learning (SDL) they must be self-disciplined, ready to explore, keep an open mind and enjoy hard work. Students will be stretched in their lessons to take on new learning challenges, encourage others in their learning and go the extra mile. They will achieve their aspirations through high standards of teaching, learning and leadership.

Warren Parsons
Lead Campus Administrator







Our history



OneSchool Global UK Reading Primary Campus is a dynamic and developing school providing Education for Years 3, 4, 5 and 6 via a curriculum approved by OneSchool Global UK that closely follows the National Curriculum. The School first opened its doors in September 2008 initially with Years 5 and 6 and the following year increased its capacity to two mixed classes. Pupil numbers have increased further and we now have two classes, with a total of 40 children.

Reading Primary Campus works very closely with its affiliated Senior School in Reading. Both schools are managed by OneSchool Global UK, a charitable educational organisation, which offers assistance by providing professional direction and support in our education programme. Our school is just one of a large number of fellow Christian schools located all over the United Kingdom and across the world in the 'OneSchool' family of schools.

The schools are regulated independent schools of Christian religious character. The CA Team and Staff are committed to uphold the Christian ethos and guiding principles of the OneSchool Global Community. We also share common values, believing that family life, modesty, courtesy and a kind and caring attitude is central to our way of life. OneSchool Global UK Reading Primary Campus provides for pupils from Reading and surrounding areas including Didcot, Wallingford, and Brightwell.

The Global House System



The Global House System is based around the ethos of inclusion and encouraging teamwork.

It is designed to reward academic work, effort, sporting achievements and good citizenship. It is the role of the House System to embrace all students and provide a climate of success for all.

The Global House System consists of three houses each with an assigned colour as shown below. These houses are run globally throughout our affiliated schools, meaning that we can encourage teamwork with other regions, not just within our campus, thus enhancing our students' desire to strive for their best, due to a much wider area of healthy and constructive competition.

Each student is assigned to a House and will normally remain in that House for his/her duration at the campus. Many house events and competitions are run which link to learning and help foster both teamwork and self-directed learning skills. The Global House System encourages healthy participation in activities and is well supported by staff and student leaders.



Charitable Fundraising



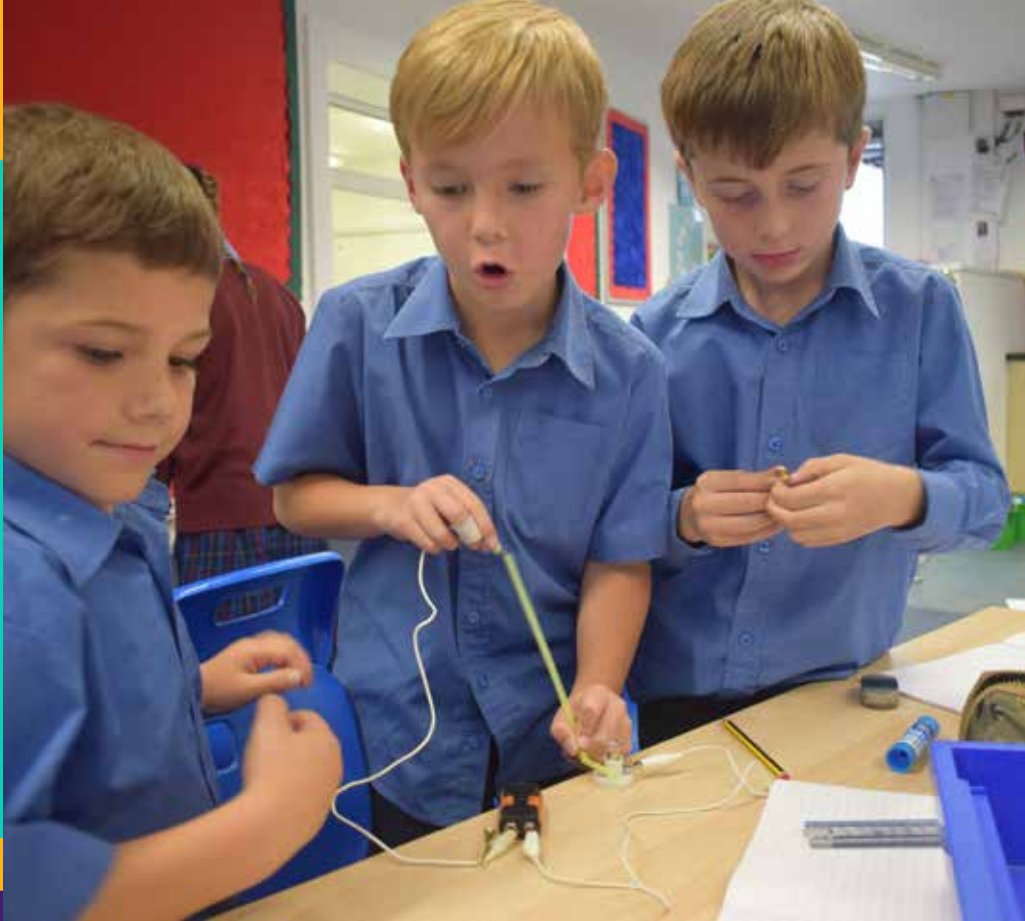
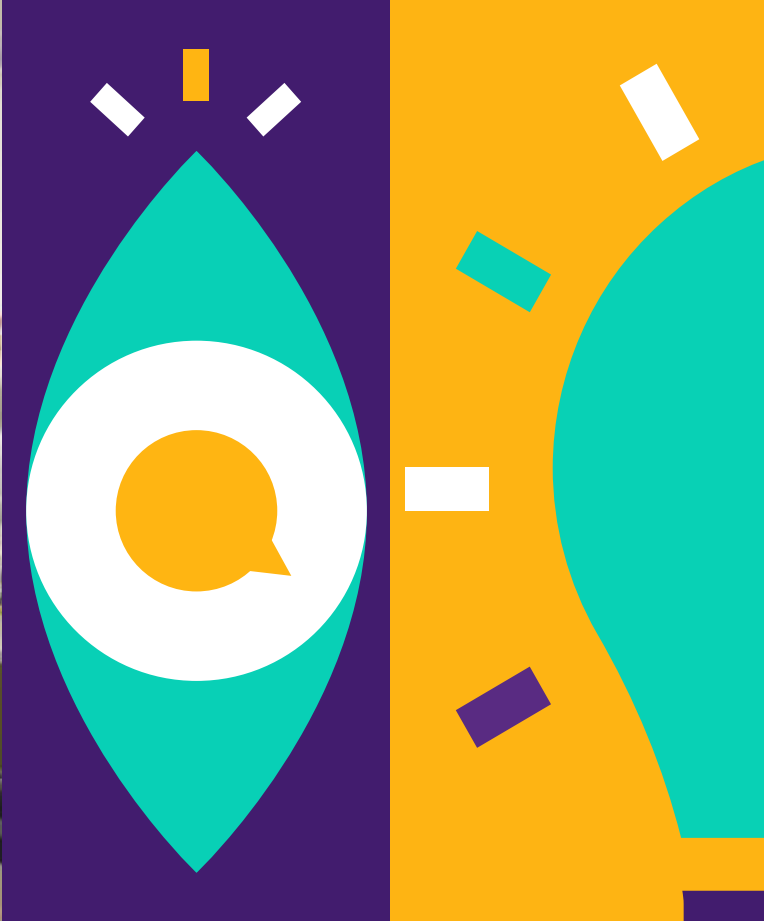
At Reading Primary Campus the whole community is committed to helping those less fortunate than ourselves.

There is a strong, student-led culture for fundraising and charity at Reading Primary Campus. This academic year students have raised money for many charities. The majority of fundraising initiatives are student-led, with representatives from our student council coming up with ideas for school-wide events. Not only does each initiative raise hundreds of pounds for charity, but it also gives students valuable experience in organising and leadership skills.

Charitable donations made recently:

- British Heart Foundation
- Macmillan Cancer Support
- Thames Valley Air Ambulance
- Crohn's & Colitis





“

Many thanks for all you have done
to get the best out of the children.

”

Our Curriculum



...wholly supports the School's ethos in promoting Christian values and provides a balance, ensuring students develop academically, aesthetically, morally and physically.

Reading Primary Campus has adopted the Curriculum Policy developed by OneSchool Global UK. The curriculum is designed to ensure that every student can realise their potential. The curriculum is assignment-based, enabling the self-directed ambition of the organisation to be fulfilled. All students follow a personalised and challenging curriculum.

Years 3-6

Art
Design & Technology
English
Geography
History
IT
LAMDA
Mathematics
MFL
Music
PSHE
Physical Education
Science

OneSchool Global Awards



The aim of the OneSchool Global Awards programme is to motivate students to achieve across a range of personal and academic qualities. It is a citation based reward system which acknowledges exemplary student behaviour in relation to our values and skills.

The main focus for awarding a citation is based on OneSchool Global Values

Integrity, Care & Compassion, Respect, Responsibility, Commitment.

The value is demonstrated through a OneSchool Global Skill

Academic Achievement, Leadership, Involvement in School Activities, Diligence, Management Skills.



Integrity



Care & Compassion



Respect



Responsibility



Commitment



Citations are key rewards within OneSchool Global and contribute to the achievement of Bronze, Silver, Gold and Platinum Awards.

The OSG Award is inextricably linked to the OSG House Cup. House Points and citations celebrate students who go above and beyond in living our OneSchool Global Values and can demonstrate progression in OneSchool Global Skills.

Policies and Documents



Reading Primary Campus is committed to the safeguarding and protection of its students in line with national guidance. We endeavour to provide a safe and welcoming environment where all children are respected, safe and valued, as well as being underpinned by the following two key principles:

- A child-centred approach; for services to be effective they should be based on a clear understanding of the needs and views of children.
- Everyone employed and who comes into contact with children at Reading Senior Campus has a responsibility in relation to safeguarding.

At Reading Primary Campus we listen to students and maintain a child-centred approach to Safeguarding and Child Protection. We provide a safe environment for students both under and over 18, especially those who are considered vulnerable. All of our Policies are available upon request from our school office or via email: reading.primary@uk.oneschoolglobal.com

Administration of Medicines Policy

Admissions Policy

Anti-Bullying Policy

Attendance Policy

Behaviour Management Policy

Complaints Procedure

Curriculum Policy

EAL Policy

Equal Opportunities Policy

Exclusions Policy

Fire Safety (Prevention) Policy

First Aid Policy

Health & Safety Policy

Learning Support (SEND) Policy

Risk Assessment Policy

RSE Policy

Safeguarding & Child Protection Policy

Safer Recruitment Policy

Supervision of Students Policy

Additionally, the particulars of the arrangements for promoting student health and safety on educational trips and visits are available from the school office on request.

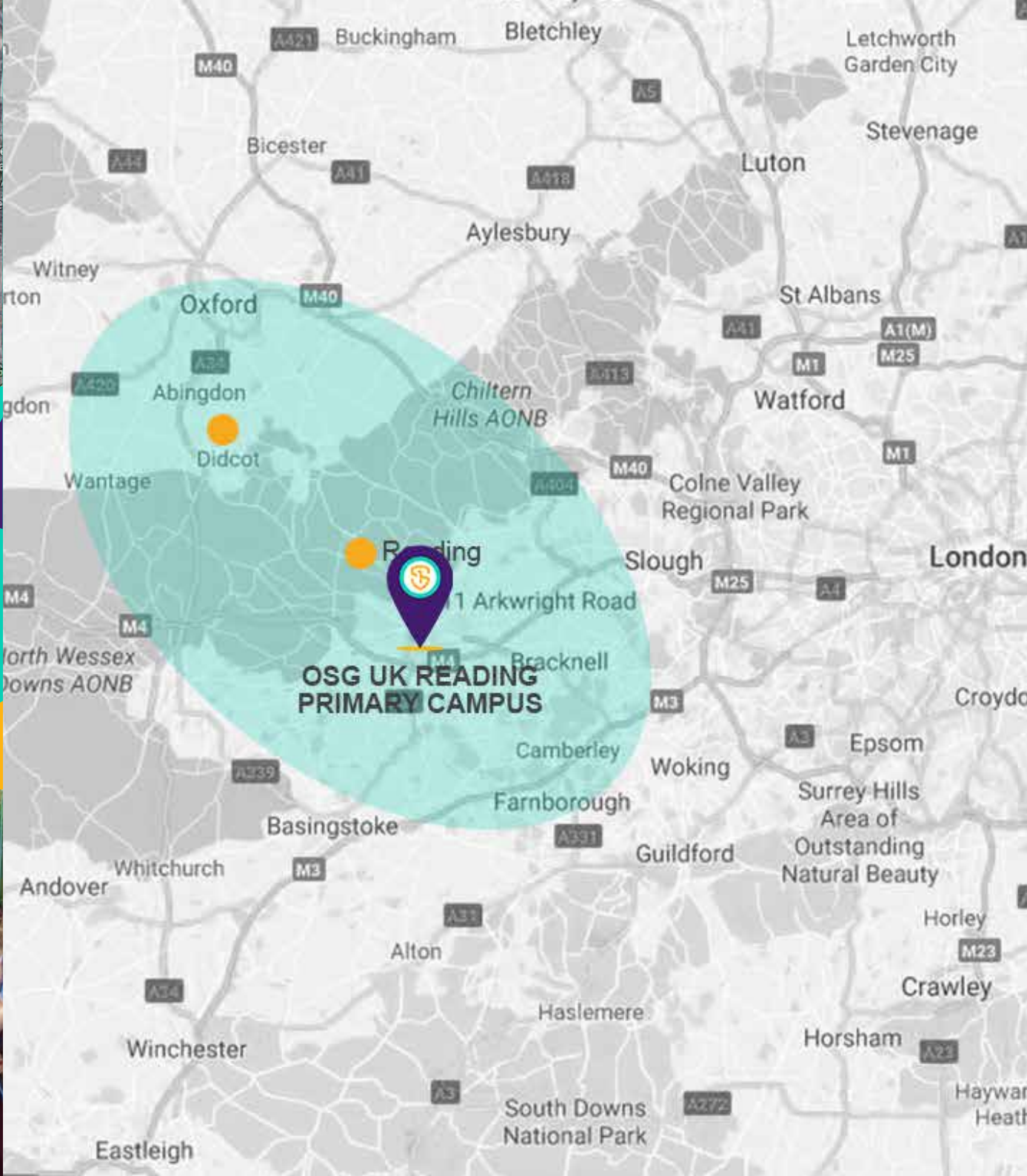
Teachers and Staffing



At OneSchool Global UK Reading Primary Campus teachers hold qualifications applicable to their post. In the absence of qualifications in some practical subjects previous experience will be considered if applicable. All staff, governors, trustees and volunteers have been subject to regulatory safer recruitment checks.

Name	Assigned Responsibilities	Qualifications
Joanna Arnold	KS2 Teacher	BEd
Caroline Corio	Regional and Campus Special Educational Needs Co-ordinator	BSc (Hons) Speech & Language, Pathology & Therapeutics, SENDCo Award
Louise O'Toole	Higher Level Teaching Assistant, Deputy DSL	-

Name	Assigned Responsibilities	Qualifications
Susan Pether	Campus Administrator	-
Corinne Rees	KS2 Teacher	BA (Hons) PGCE
Emma Stephens	Key Stage 2 Leader, Designated Safeguarding Lead	BSc (Hons) PGCE, NPQSL
Emily Kimber	Campus Principal	QTLS, DipEd



School Information



OneSchool Global UK Reading Primary Campus

401 Old Whitley Wood Lane, Reading RG2 8QA

- Tel: 0118 931 2938
- readingprimary@uk.oneschoolglobal.com
- oneschoolglobal.uk/readingprimary

Monday to Friday 09:00 AM - 15:00 PM

Proprietor: **OneSchool Global UK**

OSG UK No: 420
Examination Centre No. 52223
Charity No: 1181301
DfE No: 872/6231

Complaints and Exclusions (2022-2023):

There were no complaints or exclusions during this academic year 2022-2023.

CA Team	Mr Warren Parsons (Lead CA) Mr Ben Lyon Mr Ashley Woolgar
Campus Board Members	Mr Anton Dible Mr Cyril Parsons Mr Luke Robertson Mr Nigel Silcock Mr Seb Parsons
Campus Principal	Mrs Emily Kimber
OneSchool Global UK Representatives	Mr Ben Woodcock Mrs Kimberley Hutton
Holiday/Out of Hours Contact	Mr Warren Parsons Tel: 07848 458708
Correspondence for the Chair of the Trustees should be addressed to the Principal Office	Mr Ben Woodcock OneSchool Global Reading Senior Campus The Precinct Warwick Poseidon Way Warwick CV34 6BY

For further information and the school calendar please visit our website: oneschoolglobal.uk/readingprimary
Visit the OneSchool Global UK website: oneschoolglobal.com

“

“I really enjoy doing lessons in the learning hub and there is a really happy environment!”
“I find this school really fun and I get to meet my friends every day!”

Student

“My child is very happy at school.”
“Loved online school...”

Parent

“Personal development is outstanding. By the time that pupils leave the school they are confident and mature for their age, well prepared for the next stage of their education, willing to take on responsibility and contribute positively to the school community and the wider world..”

Inspection Report

“The arrangements for safeguarding pupils’ welfare, health and safety are outstanding. The school puts pupils’ well-being and safety at the heart of everything it does.”

Inspection Report

”





OneSchool
Global

Learning to learn

OneSchool Global UK Reading Primary Campus

401 Old Whitley Wood Lane

Reading

RG2 8QA

Tel: 0118 9312938

Email: readingprimary@uk.oneschoolglobal.com

OneSchool Global UK

The Precinct Warwick

Poseidon Way

Warwick

CV346BY

Tel. 0330 055 5600

Email: support@uk.oneschoolglobal.com