



# Hindhead Campus Prospectus

2023-2024



## Introduction


---

This School is a registered and accredited Independent School established to provide a quality education to the UK community and, in particular, to Brethren students.

The School's Ethos, Values Statement and Guiding Principles govern the School, and are reflected in a series of policies, procedures and handbooks which have been developed to meet statutory and registration requirements and are to be adhered to in all aspects of the operation of the School.

# Contents

---



About OneSchool Global	4
OneSchool Global Ethos	5
OneSchool Global Vision and Mission Statements	6
OneSchool Global Values	7
Welcome	8
History	10
Global House System	11
Our Curriculum	14
OneSchool Awards	15
Career Advancement Programme	16
Policies	18
Teachers and Staffing	19
School Information	20
Testimonials	22

## About OneSchool Global UK

OneSchool Global is a global school, with over 130 campuses in 20 countries, including cities such as New York, Paris, Sydney, Rome, Auckland, Copenhagen, Los Angeles and San Francisco.

With an innovative approach to learning, delivered in cutting-edge, technology-empowered physical and digital learning environments, OneSchool Global is preparing life-ready students who learn how to learn.

Our self-directed learning model places students at the centre of all that we do. We challenge traditional and dated pedagogy and embrace technology to deliver the best possible learning outcomes for our students.

OneSchool Global recruits and develops high quality teachers. Our teachers partner with our students in their learning and rather than being considered the 'sage on the stage', play a 'guide on the side role' to support students.

Our in-house Teacher Academy provides teachers with the training they need to be the best they can be. We provide teachers with the skills they need to be successful at OneSchool Global and skills that will make them highly capable and competent in teaching in a digital world.

OneSchool Global is a school that lives its values and is guided by the School's ethos. The School is generously supported via the donation of time and financial support from members of the Plymouth Brethren Christian Church.



Click on the OneSchool logo to learn more about how this cutting-edge schooling system was inspired and how this awesome vision is being realised.





## OneSchool Global Ethos

At OneSchool Global, we are committed to a culture where students are encouraged to develop their full potential and acquire the discipline of learning how to learn while upholding Christian teachings and beliefs.

The truth and authority of the Holy Bible and strong family values underpin the commitment of the School to provide quality in every facet of education  
- curriculum, teachers, facilities, management, and discipline - in a safe and caring environment.

## OneSchool Global Vision Statement



### **A global education ecosystem that develops life-ready students who learn how to learn and achieve.**

To ensure our students are life-ready, we need to teach differently. To be life-ready in today's world, our students need to learn how to learn. To be life ready, our students need to develop independent and critical thinking skills, and skills such as teamwork and collaboration

It is these skills that form an aptitude base that allows a student to adapt. Most importantly, these critical skills are transferable. When industry changes, when entire fields of work and job types are no longer required, it will be the life-ready, critical thinkers who stand the test of time and find new ways to add value.

We are prepared to do things differently at OneSchool Global to deliver on this vision. We challenge traditional and outdated pedagogical models. Our learning centres, the way we embed technology in them, and ultimately our students, are a testament to this.

## OneSchool Global Mission Statement



### **“Learning to Learn”**

The School is committed to creating and delivering learning programmes that meet the educational needs of each student, and to nurture the attitudes and skills necessary for the continual learning and personal growth throughout life.

“Learning to Learn” means to use learning as a tool whereby students are equipped with the ability to think critically, process information perceptually, analyse data accurately, and evaluate situations intelligently in order that they fulfil their true potential.

## OneSchool Global Values



At OneSchool Global each student, parent and staff member shall uphold the values of the School which include:

**Integrity** – uprightness, honesty and decorous conduct, governed by the Holy Bible,

**Care and Compassion** – kindness, consideration and generosity to all,

**Respect** – for all people, property, opinions and those in authority,

**Responsibility** – for our actions, progress and the environment and,

**Commitment** – to self-discipline and the pursuit of excellence.





## Welcome Message



Welcome to OneSchool Global UK Hindhead Campus

We're part of an organisation with a vision to provide a global education ecosystem that develops life-ready students who learn how to learn.

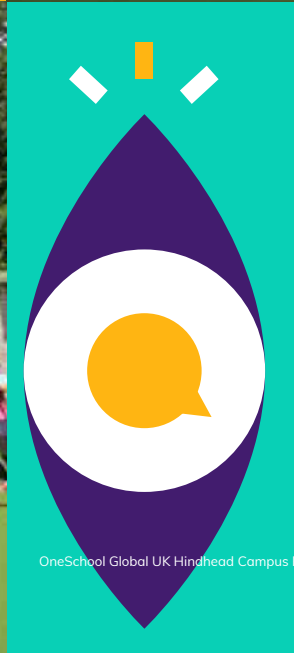
We welcome students from Years 3-13 and are passionate about ensuring that what we do for one, we do for all. We provide a comprehensive range of curriculum options, as well as offering a high level of care and support for children with Special Educational Needs.

The campus benefits from exceptional facilities including two newly built Learning Centres for both Primary and Secondary students. These centres are the main study hubs for our students and are equipped with a range of learning zones, resources and seating options to facilitate our students Learning to Learn needs. These areas facilitate the Self-Directed Learning concept which is an incredible culture shift in both teaching and learning.

Success comes from teamwork and education here at Hindhead is a joint venture, involving everyone - students, parents, staff, governors and the wider community. We have a talented, dedicated and committed teaching team who aim for excellence in teaching, alongside an outstanding range of opportunities beyond the classroom. To find out more about life at Hindhead Campus please take the time to visit. We look forward to welcoming you.

**Mr Matthew Rich**  
Lead Campus Administrator







## Our History

Established and registered in 2003 as the 'Three Counties Education Trust' in Farnham, the school moved to its current location in September 2008 and is now well-established in its new premises. We are located in Surrey on the edge of an area of outstanding natural beauty known as The Punch Bowl. Hindhead is the highest village in Surrey enjoying wonderful views and beautiful scenery. Sir Arthur Conan Doyle, author of Sherlock Holmes, used to walk on Hindhead Commons and it's said that he used Hindhead as the inspiration for the book 'The Hound of the Baskervilles'.

We have excellent communication links to London and the South being just minutes from the A3. The is currently being extended, modernised and re-furbished to a high standard and we are constantly improving the learning environment for our students. We have acres of school grounds containing grass and all weather pitches for sports and recreation.

The school was built in 1897 and was once owned by Lloyds Bank and the Guide Dogs for the Blind Association and although now modernised significantly the original charm of the building has been preserved. As a registered examination centre, Hindhead Campus gives all of our 226 pupils and students the opportunity to fulfil their potential with a high standard of learning being reflected in the excellent results achieved in nationally accredited examinations.

## The Global House System



**The Global House System is based around the ethos of inclusion and encouraging teamwork.**

It is designed to reward academic work, effort, sporting achievements and good citizenship. It is the role of the House System to embrace all students and provide a climate of success for all.

The Global House System consists of three houses each with an assigned colour as shown below. These houses are run globally throughout our affiliated schools, meaning that we can encourage teamwork with other regions, not just within our campus, thus enhancing our students' desire to strive for their best, due to a much wider area of healthy and constructive competition.

Each student is assigned to a House and will normally remain in that House for his/her duration at the campus. Many house events and competitions are run which link to learning and help foster both teamwork and self-directed learning skills. The Global House System encourages healthy participation in activities and is well supported by staff and student leaders.



## Charitable Fundraising

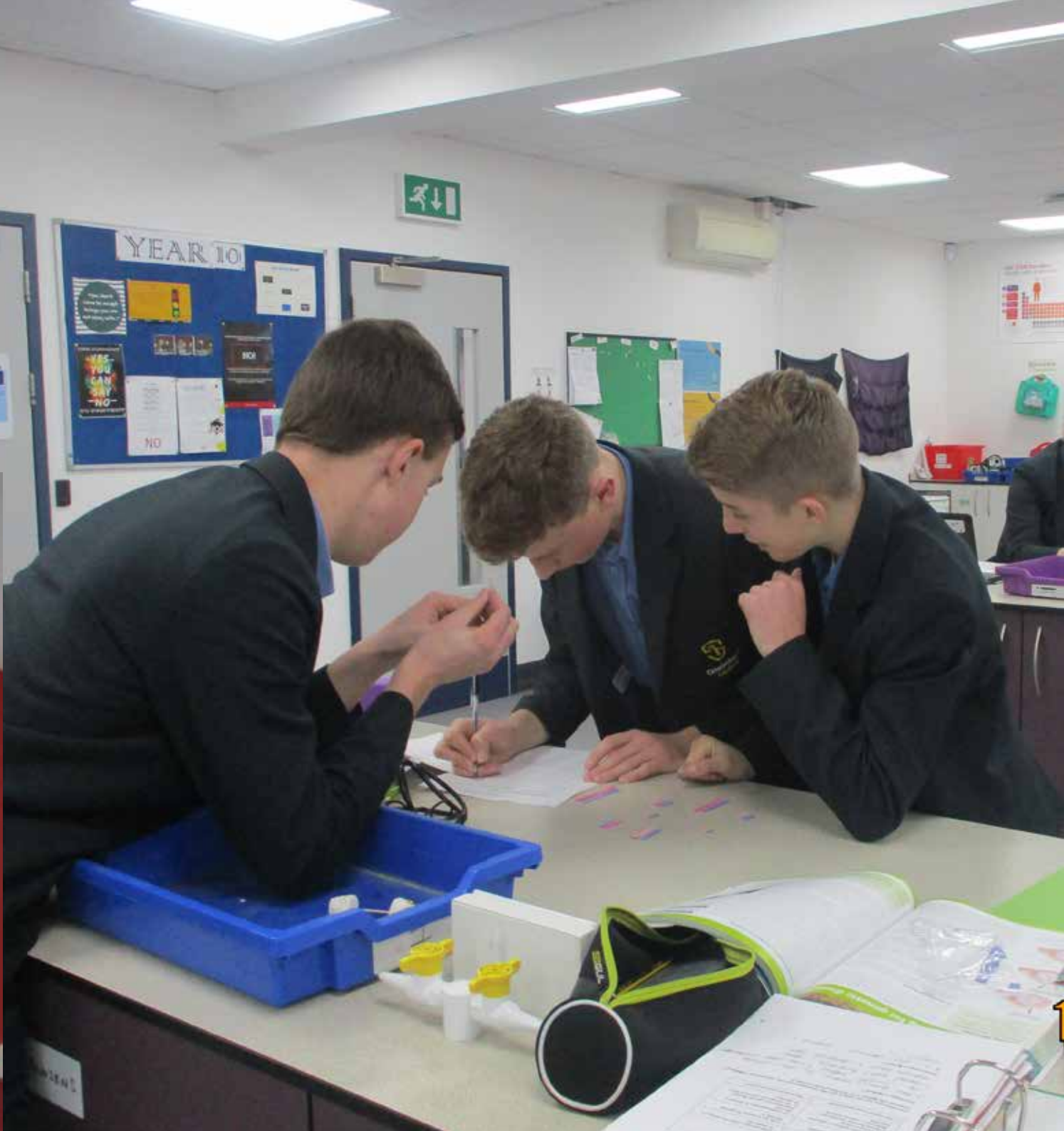


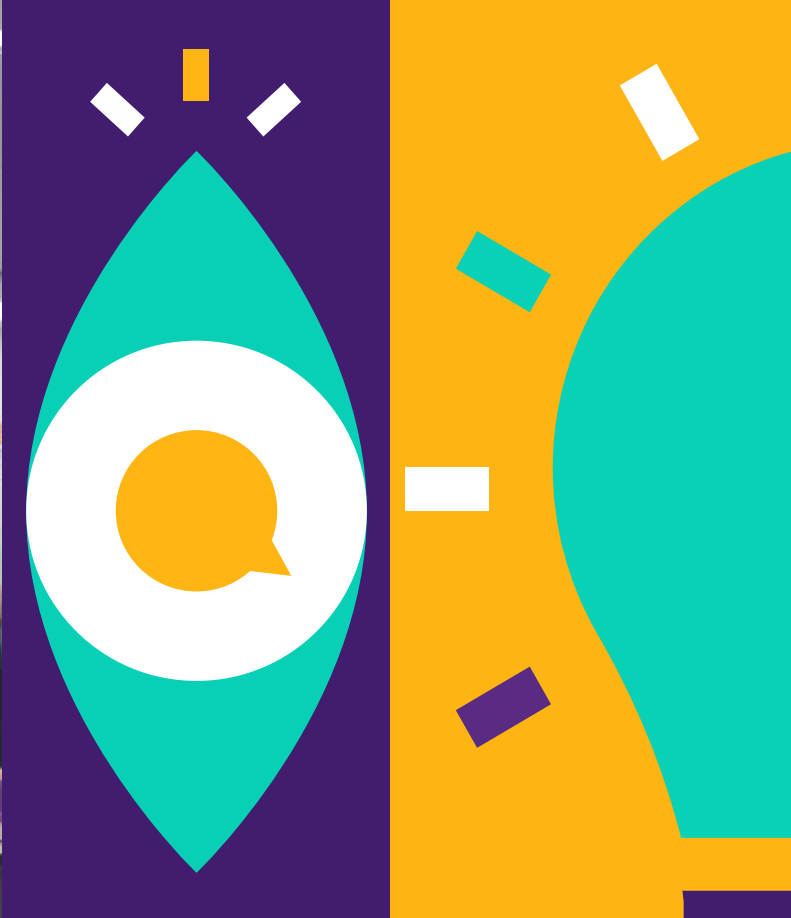
**At Hindhead Campus the whole community is committed to helping those less fortunate than ourselves.**

There is a strong, student-led culture for fundraising and charity at Hindhead Campus. This academic year students have raised money for many charities. The majority of fundraising initiatives are student-led, with representatives from our student council coming up with ideas for school-wide events. Not only does each initiative raise hundreds of pounds for charity, but it also gives students valuable experience in organising and leadership skills.

Charitable donations made recently include:

- Macmillan
- British Heart Foundation
- Unicef
- Help for Heroes
- Teenage Cancer Trust
- Great Ormond Street hospital





“

The students are a super example of honest, determined and focused young people. It is a pleasure to teach at Hindhead Campus and be part of the journey.

”

# Our Curriculum



**...wholly supports the School's ethos in promoting Christian values and provides a balance, ensuring students develop academically, aesthetically, morally and physically.**

Hindhead Campus has adopted the Curriculum Policy developed by OneSchool Global UK. The curriculum is designed to ensure that every student can realise their potential. The curriculum is assignment-based, enabling the self-directed ambition of the organisation to be fulfilled. All students follow a personalised and challenging curriculum. LAMDA qualifications are offered in all our schools.

## Years 3-6

Art  
Design & Technology  
English  
Geography  
History  
IT  
LAMDA  
Mathematics  
MFL  
Music  
PSHE  
Physical Education  
Science

## Years 7-8

Art  
Citizenship  
Design & Technology  
English  
Geography  
History  
IT  
LAMDA  
Mathematics  
MFL  
PSHE  
Physical Education  
Science

## Years 9-11

Art, Craft & Design  
Citizenship  
Design & Technology  
English  
Food & Nutrition  
French  
Geography  
German  
History  
ICT  
LAMDA  
Mathematics  
PSHE  
Physical Education  
RSE  
Science  
Spanish

## Years 12-13

All of our students progress to the sixth form and are offered a broad range of curriculum options designed to meet the abilities and aspirations of all our learners.

Cambridge International A Level qualifications are offered in Art & Design, Design & Technology, English, History, Geography, Mathematics, Accounts, Law, Business Studies, French and German, and Global Perspectives alongside Cambridge Technical qualifications in IT, Digital & Creative Media, and Business, a range of Level 2 qualifications, and Autodesk Fusion 360.

Additional subjects include Physical Education and PSHE, while courses such as Chef Skills, LAMDA Speaking in Public, London Institute of Banking and Finance and Extended Project Qualifications are available to students.

Digital technology, including Zoom and Canvas platforms enable campuses to collaborate with other schools for subject delivery which enables students to study subjects that would not normally be economically viable.

Xello and the Careers Advantage Programme also adds a unique and high quality vocational element to our curriculum which supports all students in gaining a better understanding of their career pathway and progression routes helping to ensure they are life-ready on graduation from OneSchool Global UK and excited about embarking on future post graduate qualifications.

Extra-Curricular activities are a strength of our school. Our students have the opportunity to collaborate on extra-curricular projects and activities at campus, regional and global level. Recent highlights including our termly Choir Festival, annual Public Speaking Competition and inter campus debating opportunities. Our extra-curricular offer is a key part of our curriculum and an area of continuous growth and development for OSGUK.

# OneSchool Global Awards



The aim of the OneSchool Global Awards programme is to motivate students to achieve across a range of personal and academic qualities. It is a citation based reward system which acknowledges exemplary student behaviour in relation to our values and skills.

**The main focus for awarding a citation is based on OneSchool Global Values**  
Integrity, Care & Compassion, Respect, Responsibility, Commitment.

**The value is demonstrated through a OneSchool Global Skill**  
Academic Achievement, Leadership, Involvement in School Activities, Diligence, Management Skills.



Integrity



Care & Compassion



Respect



Responsibility



Commitment



Citations are key rewards within OneSchool Global and contribute to the achievement of Bronze, Silver, Gold and Platinum Awards.

The OSG Award is inextricably linked to the OSG House Cup. House Points and citations celebrate students who go above and beyond in living our OneSchool Global Values and can demonstrate progression in OneSchool Global Skills.



Hit the ground  
running

## Career Advancement Programme



**Bridging the gap between school and work;  
OneSchool Global UK offer a unique career  
advancement plan to all our students and this is  
proven to prepare them for the world of work:**

### What is CAP?

The Career Advantage Programme (CAP) provides all students with the opportunity to gain the skills and aptitude to achieve rapid success in their post-school careers.

CAP does this by:

- Providing Career Fundamentals and Business Foundations offered to all students in Year 12 and 13.
- Analysing the capability of each student professionally to ensure the student can effectively complete the courses.
- Sponsorship for students to carry out extra-curricular studies in the last two years of school.

### The CAP curriculum

All students in Year 12 complete a Career Fundamentals course which is a global standard for employers. For CAP students, the diploma-type courses provide a theoretical and academic rigour which underpins the students' academic programme and the career skills-based study provides practical, real-world approaches to learning and helps them to develop skills and competencies required for lifelong learning.

Visit the website to find out more

<https://www.oneschoolglobal.com/cap/>

# Beyond the classroom



## Why is CAP Important?

There is an increasing awareness globally that high school studies alone are not adequately preparing students for the modern workforce. The Career Advantage Programme is aimed at equipping our children with the necessary skills to bring positive benefits to our businesses from day one.

### Important for students:

- improving their employment opportunities
- improving the potential of earning a higher income on graduation
- empowering rapid progress along their career path

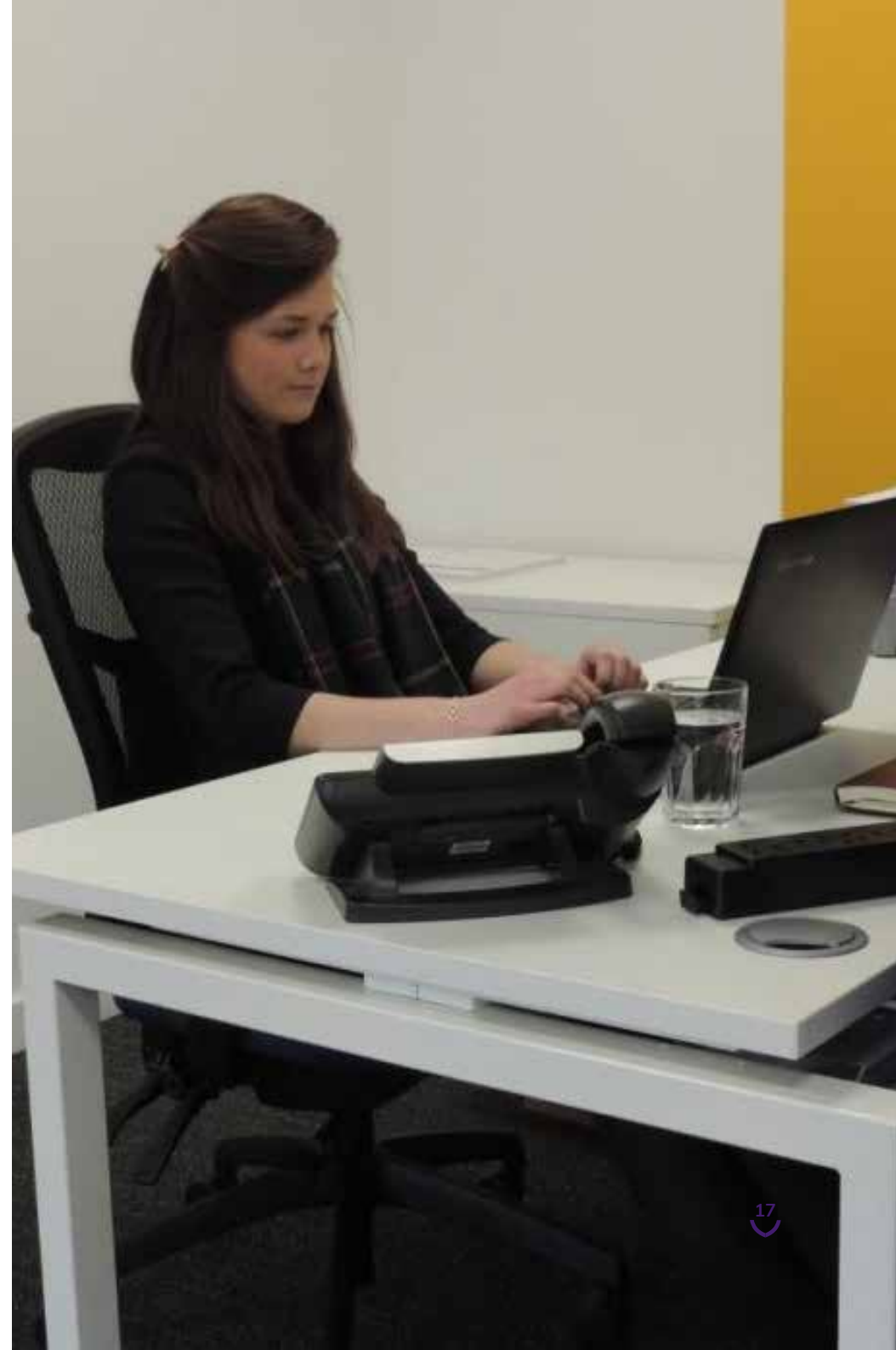
### Important for businesses:

- higher value employees that are useful from day one
- employees with an established work ethic; self-starters, self-finishers, self-motivators
- employees that understand the value of study and training

“The innovative approach to the curriculum, teaching and learning is what makes this school outstanding because it enables all pupils to make excellent progress and achieve their very best.”



- Business Owner



# Policies and Documents



Hindhead Campus is committed to the safeguarding and protection of its students in line with national guidance. We endeavour to provide a safe and welcoming environment where all children are respected, safe and valued, as well as being underpinned by the following two key principles:

- A child-centred approach; for services to be effective they should be based on a clear understanding of the needs and views of children.
- Everyone employed and who comes into contact with children at Hindhead Campus has a responsibility in relation to safeguarding.

At Hindhead Campus we listen to students and maintain a child-centred approach to Safeguarding and Child Protection. We provide a safe environment for students both under and over 18, especially those who are considered vulnerable. All of our Policies are available upon request from our school office or via email: [hindhead@uk.oneschoolglobal.com](mailto:hindhead@uk.oneschoolglobal.com)

---

Administration of Medicines Policy

---

Admissions Policy

---

Anti-Bullying Policy

---

Attendance Policy

---

Behaviour Management Policy

---

Complaints Procedure

---

Curriculum Policy

---

EAL Policy

---

Equal Opportunities Policy

---

Exclusions Policy

---

Fire Safety (Prevention) Policy

---

First Aid Policy

---

Health & Safety Policy

---

Learning Support (SEND) Policy

---

Risk Assessment Policy

---

RSE Policy

---

Safeguarding & Child Protection Policy

---

Safer Recruitment Policy

---

Supervision of Students Policy

Additionally, the particulars of the arrangements for promoting student health and safety on educational trips and visits are available from the school office on request.

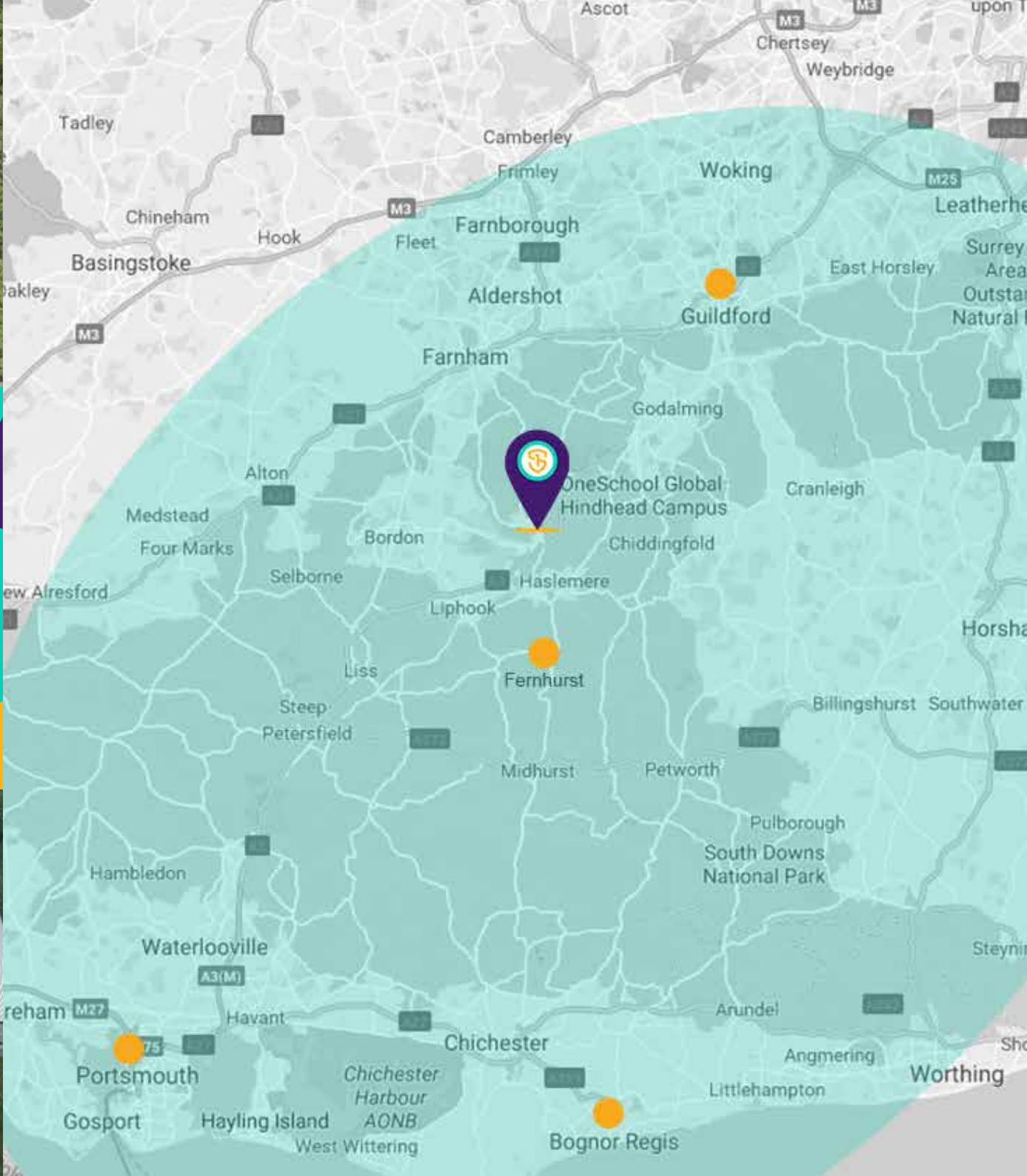
# Teachers and Staffing



All OneSchool Global UK Hindhead Campus teachers hold qualifications applicable to their post. In the absence of qualifications in some practical subjects previous experience will be considered if applicable. All staff, governors, trustees and volunteers have been subject to regulatory safer recruitment checks.

Name	Assigned Responsibilities	Qualifications
Maxine Baker	LSA	-
Rachel Barrasford	Food Tech	BA
Imogen Barton	Year 5	NQT
Sophie Bowerbank	History	BSc MA
James Brett	ACP	BA Hons
Iain Buchanan	HLTA/IT	-
Kim Butler	LSCO	IPD MA
Camilla Cook	Campus Admin Officer	BA Hons
Nicky Christoforou	Science Teacher	BSc PGCE
Darren Freeman	DT Teacher	BA Hons
Carla Guttilla	Year 3	BSc PGCE
Mark Heffernan	PE, Maths, Geography	BA Hons
Justin Lees	Year 6	BA Hons PGCE
Svitlana Lymanska	Science Technician	BSc

Name	Assigned Responsibilities	Qualifications
Jacqui Maybury	Campus Admin Officer, Exams Officer	-
Nina Mosses	LSA	BA Hons
Nicola Rowson	LSA	-
Emma Peebles	ACP	BA Hons PGCE
Liam Rowland	Campus Principal	BA Hons PGCE
Tony Ryder	Premises Manager	-
Joanne Snelling	LSA	-
Melanie Squires	Deputy Campus Principal Business Studies	BA Hons PGCE
Joanne Taylor	Campus Admin Officer	-
Andrew Turner	Year 4	B Ed MA
Kate Wenden	Specialist Teacher	BSc Hons PGCE



# School Information



## OneSchool Global UK Hindhead Campus

Tilford Road, Hindhead, GU26 6SJ

- Tel: 01428 601800
- [hindhead@uk.oneschoolglobal.com](mailto:hindhead@uk.oneschoolglobal.com)
- [oneschoolglobal.com/hindhead](https://oneschoolglobal.com/hindhead)

Monday to Friday 08:40 - 15:00

Proprietor: **OneSchool Global UK**

OSG UK No: 505  
Examination Centre No. 64371  
Charity No: 1181301  
DfE No: 936/6585

### Complaints and Exclusions (2022-2023):

There were no complaints or exclusions during this academic year 2022-2023.

### CA Team

Mr Matthew Rich – Lead CA  
Mr Nick Knappett

### Campus Board

Mr Dale Moggach  
Mr Blake Prisgrove  
Mr Gerry Marsh  
Mr Rob Rose  
Mr Shane White

### Campus Principal

Mr Liam Rowland

### OneSchoolGlobal UK Representatives

Mr Ben Woodcock  
Mrs Kimberley Hutton

### Holiday/Out of Hours Contact

Mr Ben Woodcock Tel: 07837 174397  
email: [ben.woodcock@uk.oneschoolglobal.com](mailto:ben.woodcock@uk.oneschoolglobal.com)

### Correspondence for the Chair of the Trustees should be addressed to the Principal Office

Mr Terry Mitchell  
OneSchool Global Hindhead Campus  
The Precinct Warwick  
Poseidon Way  
Warwick  
CV34 6BY

For further information and the school calendar please visit our website: [oneschoolglobal.com/hindhead](https://oneschoolglobal.com/hindhead)  
Visit the OneSchool Global UK website: [www.oneschoolglobal.com](https://www.oneschoolglobal.com)

“

SDL is a brilliant forward-thinking system which enables you to find your own way to learn and allows for optimum flexibility.

Student

Since my children have joined OneSchool Global UK we have been amazed at the time and resource that goes into each of the pupils individually to release their potential.

Parent

OneSchool Global UK are innovative and lie at the cutting edge of evolving teaching methodology.

Teacher

”





**OneSchool**  
**Global**

*Learning to learn*

**OneSchool Global UK Hindhead Campus**

Tilford Road  
Hindhead  
GU26 6SJ  
Tel: 01428 601800  
Email: [hindhead@uk.oneschoolglobal.com](mailto:hindhead@uk.oneschoolglobal.com)

**OneSchool Global UK**

The Precinct Warwick  
Poseidon Way  
Warwick  
CV346BY  
Tel. 0330 055 5600  
Email: [support@uk.oneschoolglobal.com](mailto:support@uk.oneschoolglobal.com)