



OneSchool
Global



OneSchool Global QLD

Annual Report

2022

Australia

www.oneschoolglobal.com



Thank you to
students and staff for
commencing the year
so well and making it
such a success.

Contents



A message from the District Principal

District Principal Message

Contextual Information About the School

School Ethos

Values Statement

Learning to Learn Statement

Graduate Attributes

Teacher Standards and Qualifications

Staff Compositions

Parent, Teacher, and Students Satisfaction

Student Attendance

School Income

Key Academic Achievements and Developments

NAPLAN

Vocational Educational and Training

Year 10 Retention

Year 12 Results

Post School Destination Information



A message from the District Principal



Mrs Katherine Merritt

District Principal
BEd(Sec)(Hons)

2022 has brought a wave of positivity to schools nationwide, OneSchool Global QLD included, as we have regained the ability to operate more efficiently and successfully reintegrate our students back onto campuses with the lingering effects of COVID-19 not impacting us this year.

The OneSchool Global WIG for 2022 was to attract, develop and retain quality staff and OneSchool Global QLD has accomplished the remarkable feat of securing exceptional teachers who wholeheartedly embrace our values and vision, cultivating a profound positive culture within our schools. This remarkable positivity is evident in the surveys we distribute to all stakeholders, as staff and parent satisfaction have consistently surged across all four of our campuses.

In addition, 2022 has witnessed the return of various campus-based activities, including open days, Grandparents' Day, and sports carnivals, among others. These events have provided our students with a splendid platform to proudly exhibit their achievements while fostering a sense of unity and teamwork within our larger school community.

We have made substantial progress in integrating our Learning to Learn framework into our campus and ensuring its application across all student learning experiences. To facilitate this process, we organised informative webinars for parents and students, skillfully led by Mr. Paul Maher (Regional Principal QLD, WA & SA) and Mrs. Mary Baxter (Director of Studies VIC). Furthermore, our Heads of Departments actively collaborated with their teams, engaging in meaningful discussions centered around empowering students to embrace self-direction. Specifically, we explored how students can effectively set goals, engage in reflective practices, and demonstrate responsible actions to bring meaningful change, as eloquently defined by Andreas Schleicher.

In Toowoomba, our dedicated students took it upon themselves to tackle the challenge of enhancing students' understanding of the L2L Framework and fostering a more positive culture within our learning spaces. They had the privilege of meeting with Mr. Matt Phillip, our Global Teaching and Learning Director, and we eagerly anticipate witnessing the progress that will unfold in 2023 as a result of this collaboration.

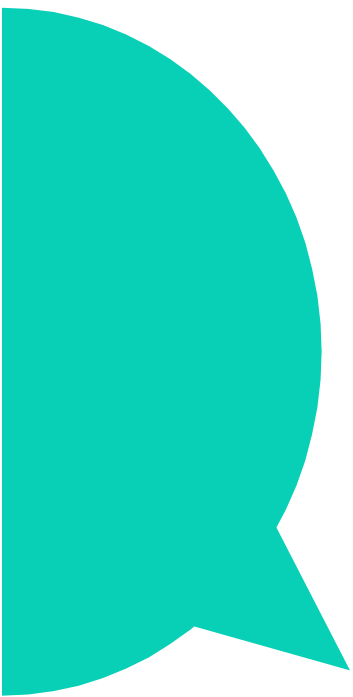
Throughout 2022, we have remained steadfast in our commitment to implement strategic plans and school improvement initiatives that align with our overarching goal of preparing students for a successful life beyond the classroom. To ensure comprehensive development, each Campus Principal developed Campus Road Maps, outlining specific initiatives and goals for each academic term. These Road Maps seamlessly aligned with the broader OSG improvement plan, resulting in a highly successful framework for tracking our journey throughout 2022. Additionally, Campus Principals had the invaluable opportunity to connect with their counterparts from across Australia at a conference held in Sydney, facilitating insightful exchanges, and enriching professional growth.

Professional learning plays a pivotal role in ensuring that our entire staff remains well-informed and proficient in key areas. We recently organised a highly productive Professional Learning Day, where our dedicated staff received valuable training on essential topics such as Child Protection, effective utilization of Sentral, creating impactful Canvas pages, setting clear expectations in the Learning Centre, and implementing the Learning to Learn (L2L) Framework further into our campuses. This event served as a fantastic opportunity for experienced staff members to engage in meaningful professional conversations with newer colleagues, fostering greater equity across all campuses. Furthermore, all staff members had the privilege of viewing the inspiring TED talk titled "Every Kids Needs a Champion."

Recognising the significance of staff and student well-being as a nationally identified concern, we have been proactive in upskilling our staff and providing students with access to vital resources. The Resilience Centre has proven to be an invaluable asset, offering students the opportunity to meet with qualified professionals who can provide crucial support in matters of mental and social well-being. Additionally, our Campus Principals have undergone professional development and received training in Youth Mental Health First Aid, further equipping them to address the well-being needs of our students.

We are thrilled to witness a significant growth in students pursuing the ATAR pathway across our campuses. In 2022, the percentage of students opting for this pathway rose from 37% to an impressive 73%. Notably, our Year 12 students achieved a remarkable mean ATAR of 78.38, with the highest score reaching an impressive 91.70. This exceptional progress is consistently reflected in our MAP data, which demonstrates excellent student growth.

We attribute the success and positive outcomes experienced this year to the collaborative efforts, unwavering support, and remarkable teamwork exhibited by all our stakeholders, including the State Board, Mr. Paul Maher, and our teaching and non-teaching staff. We extend our heartfelt gratitude to everyone involved, including our incredible CA team, dedicated students, supportive parents, and the wider community. Their contribution has made a significant difference in shaping our school's achievements throughout the year.



Contextual Information About the School



OneSchool Global QLD is an independent, co-educational school which operates in a network of Brethren Schools nationally and globally. OneSchool Global QLD has an enrolment of 293 students (148 boys and 145 girls) across 4 campuses in Queensland which are located in Brisbane, Maryborough, Nambour and Toowoomba.

Enrolment at the school is open to the children of all Brethren families and children of families who are willing and able to support the ethos of the school. The school has a rich academic program which is supported by an extensive ICT blended mode of teaching and learning. The school also offers a vibrant co-curricular program which includes sport, music, and community involvement.

School Ethos

At this school, students are encouraged to develop their full potential and acquire the discipline of learning how to learn, while upholding Christian teachings and beliefs. The truth and authority of the Holy Bible and strong family values underpin the commitment of the school to provide quality in every facet of education – curriculum, teachers, facilities, management, and discipline – in a safe and caring environment.

Values Statement



Integrity
uprightness, honesty, and decorous conduct, governed by the Holy Bible.



Responsibility
for our actions, progress, and the environment.



Care & Compassion
kindness, consideration, and generosity to all.



Respect
to self-discipline and the pursuit of excellence.



Respect
for all people, property, opinions, and authority.



Learning to Learn Statement

OneSchool Global is committed to creating and delivering learning programs that meet the educational needs of each student, and to nurture the attitudes and skills necessary for continual learning and personal growth throughout life.

“Learning to Learn” means to use learning as a tool whereby students are equipped with the ability to think critically, process information perceptually, analyse data accurately and evaluate situations intelligently in order that they fulfil their true potential.

OneSchool Graduate Attributes

- ✓ To learn how to learn.
- ✓ To become a positive contributor to community, family and workplace.
- ✓ To learn the skills to become self-directed, life-long learners.
- ✓ To explore and develop personal potential.
- ✓ To gain employability skills.
- ✓ To demonstrate qualities of leadership.
- ✓ To articulate thoughts and ideas effectively using a range of communication skills.
- ✓ To be critical users of information and technology.
- ✓ To uphold Christian values.

Further information about the school is available from the My School website <http://www.myschool.edu.au>

Teacher Standards and Qualifications

All staff are registered to teach in Queensland and in addition are trained in mandatory reporting. Many of the staff have obtained two or more qualifications. The following table is a summary of our 2022 staff qualifications:

Qualification	Number of Staff
Certificate	15
Diploma	5
Bachelor	23
Bachelor Hons, Grad Cert, Grad Dip	24
Masters	8
Doctorate or higher	0

Staff Compositions

Along with course specific teachers, specialist staff are engaged to assist with the day-to-day operations of the school.

There were no indigenous staff in 2022.

Female	Male
39	10

Parent, Teacher and Student Satisfaction

Staff appreciate the benefits of teaching at OneSchool Global QLD where small class sizes, cooperative and positive student attitudes, and close working relationships between staff and the school community ensure teaching at the school a rewarding experience for teachers.

Summary data for a recent Teacher Survey is available on request.

Parents see feedback on students' performance as being clear, simple, and regular. The school newsletter also informs parents and the wider community of life at OneSchool Global QLD.

Summary data for a recent Parent Survey is available on request.

Both students and parents appreciate the efforts by staff to create the best possible outcomes for students, and they feel part of a safe, supportive, and positive learning environment.

Excursions are well received, and major events such as Academic Awards, Sports Day and Fundraising Days are eagerly anticipated.

Student Attendance

The average student attendance rate for the whole school in 2022 was 91.20%.

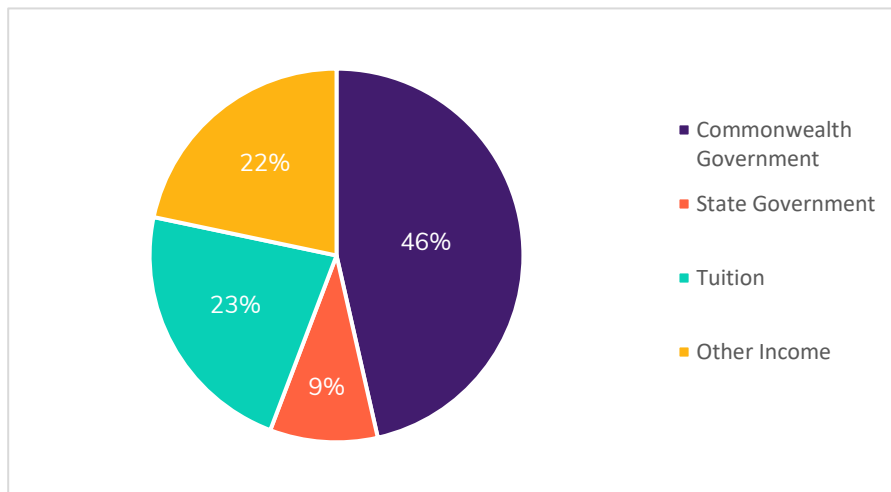
Attendance at school has a big impact on longer term outcomes for our students. Regular attendance is a shared responsibility between our school and the parents and by working together, we can have a positive effect on supporting our children and young people to regularly attend school.

Our teachers promote and monitor regular attendance and all our schools have effective measures in place to record attendance and follow up student absences promptly. They are guided by the School Attendance policy which details the management of non-attendance.

Year Level	Rate of Attendance (%)
3	90%
4	90%
5	90%
6	92%
7	90%
8	92%
9	89%
10	91%
11	94%
12	94%

Income broken down by funding source

Source of income for 2022 shown on the chart below.



Key Academic Achievements and Developments



NAPLAN

OneSchool Global QLD students performed at or above the national mean for 9 of the 20 assessments.

Year Level	Reading		Writing		Spelling		Grammar & Punctuation		Numeracy	
	OSG QLD	National	OSG QLD	National	OSG QLD	National	OSG QLD	National	OSG QLD	National
3	419	438	396	422	390	418	429	433	408	400
5	501	510	461	484	464	505	492	499	479	488
7	566	543	526	530	546	547	560	533	566	546
9	597	578	566	560	586	577	595	573	591	584

Vocational Education and Training

In 2022, 13 students completed their Certificate III in Business, 8 students completed their Diploma of Business, and 6 students completed their Certificate IV in Accounting and Bookkeeping.

Year 10 Retention

Year 10 2020	Year 12 2022	Retention Rate (%)
26	26	100%

Year 12 Results

Of the 7 Non-ATAR eligible students, 5 students achieved a QCE and 7 students successfully completed a Certificate III or Diploma.

Number of Year 12 students	% of students that attained a QCE or QCIA (OSG QLD)	% of students that attained a QCE or QCIA (State)
26	92%	94%

Outcomes for our Year 12 cohort 2022

Number of students awarded a Senior Education Profile (SEP)	26
Number of students awarded a Queensland Certificate of Education (QCE)	24
Number of students awarded one or more Vocational Education and Training (VET) qualifications	24
Number of students who received an ATAR	19
Number of students who are completing or completed a School-based Apprenticeship or Traineeship (SAT)	1
Number of students awarded a Queensland Certificate of Individual Achievement (QCIA)	0
Number of students receiving a Senior Statement only	2
Number of Year 12 students who received an ATAR above 90	1

Post School Destination Information

At the time of publishing this School Annual Report, the results of the 2022 post-school destinations survey, Next Steps – Student Destination report for the school was not available.

Information about these post-school destinations of our students will be uploaded to the school's website in September after the release of the information.



**OneSchool
Global**

PO Box 3422, Tingalpa DC QLD 4173
190 Ingleston Road, Wakerley QLD 4154
PH | 1300 378 406

admin.qld@au.oneschoolglobal.com
www.oneschoolglobal.com